

List of tables

Table 1. Models of new differentiations, 1973-1989

Table 2. Models of new differentiations, 1993-2011

List of figures

Figure 1. Differentiation in EU legislation over time

Figure 2. The effect of wealth on differentiation, 1973-1989

Figure 3. The effects of wealth, identity, and ideology on differentiation in core state powers

Figure 4. Classification performance

Please note:

The tables can be found below.

The figures can be found below and also as tiff-files (submitted together with this document).

The notes corresponding to the figures can be found below.

Table 1. Models of new differentiations, 1973-1989

	1	2	3	4
Period:	1973-1989	1973-1989	1973-1989	1973-1989
Domain:	Market	Agriculture	Regulation	Core state powers
Wealth	-0.106 (.042)*	-.153 (.046)*	-.217 (.040)*	<i>Not applicable</i>
Euroskepticism	.014 (.009)'	.033 (.013)*	.046 (.017)*	
Ideology	.235 (.079)*	.066 (.181)	-.120 (.075)	
Yearly trend	-.093 (.025)*	-.049 (.034)	-.013 (.021)	
Constant	-3.036 (.585)*	-3.657 (.877)*	-4.250 (.500)*	
Obs	4867	7586	2141	
Pseudo r ²	0.056	0.055	0.075	
Pseudolikelihood	-612.166	-758.311	-138.032	

Note: ' p <.1, * p <.05. Country-clustered standard errors in parentheses. Core state powers: There are only 23 new laws without any differentiation in this area before 1990.

Table 2. Models of new differentiations, 1993-2011

	1	2	3	4
Period:	1993-2011	1993-2011	1993-2011	1993-2011
Domain:	Market	Agriculture	Regulation	Core state powers
Wealth	-0.019 (.022)	-.033 (.012)*	-.038 (.016)*	.138 (.019)*
Identity	.015 (.015)	.021 (.010)*	-.006 (.016)	.077 (.040)'
Ideology	.070 (.142)	-.063 (.080)	.138 (.074)'	.276 (.132)*
Yearly trend	.013 (.040)	-.063 (.013)*	-.021 (.032)	.015 (.033)
Constant	-5.481 (.701)*	-3.613 (.301)*	-4.849 (.453)*	-4.975 (.810)*
Obs	11843	6755	8696	5265
Pseudo r ²	0.003	0.017	0.010	0.139
Pseudolikelihood	-452.845	-474.318	-477.909	-649.501

Note: ' p <.1, * p <.05. Country-clustered standard errors in parentheses.

Figure 1. Differentiation in EU legislation over time

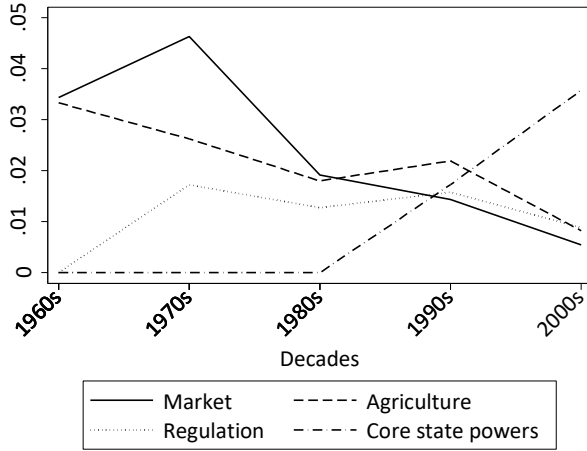
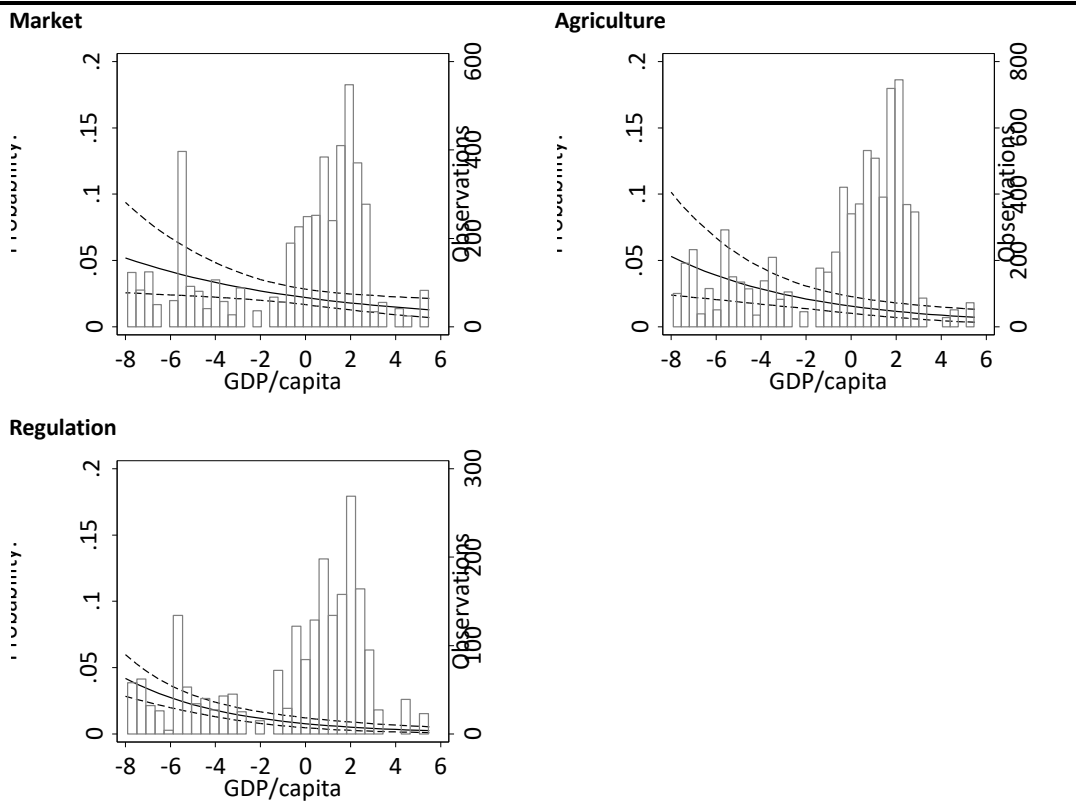
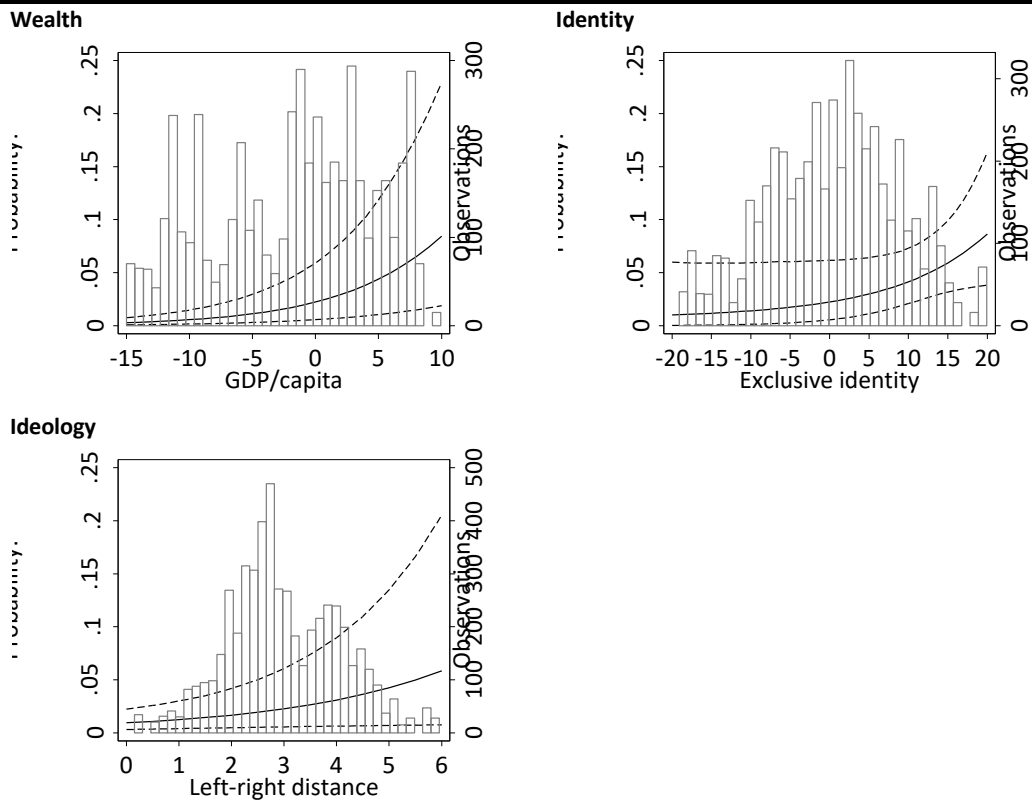


Figure 2. The effect of wealth on differentiation, 1973-1989



Note: The vertical axis on the left and the trend lines display the probability of a new differentiation, estimated with *Clarify* (Tomz et al. 2003). The estimated effects are based on the results in Table 1. Euroscepticism is held at "0" (no distance from the EU average in a given year); the yearly trend and ideological distance are set to their means.

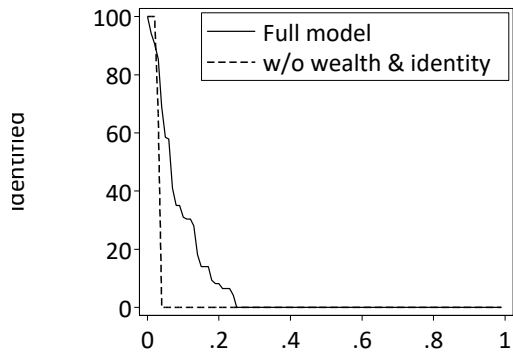
Figure 3. The effects of wealth, identity, and ideology on differentiation in core state powers



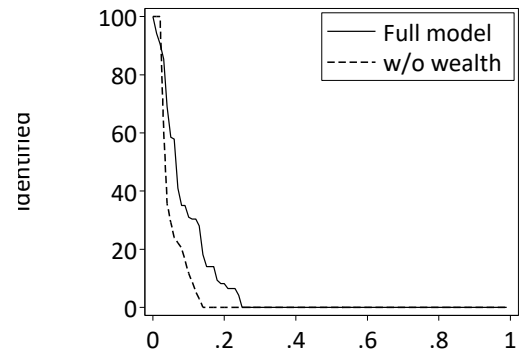
Note: The vertical axis on the left, and the trend lines, display the probability of a new differentiation, estimated with *Clarify* (Tomz et al. 2003). The estimated effects are based on the results of model 4 in Table 2. Wealth and identity, unless plotted, are held at “0” (no distance from the EU average in a given year); the yearly trend and ideological distance, unless plotted, are set to their means.

Figure 4. Classification performance

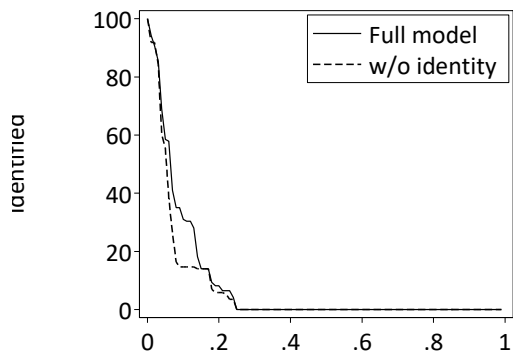
Full model v. wealth and identity removed



Full model v. wealth removed



Full model v. identity removed



Note: Based on model 4 in Table 2. Horizontal axis: Classification cut-off – if the model estimates a differentiation probability exceeding this cut-off point, a case is classified as a positive outcome. The classifications are then compared to the observed outcome.