

- 1 **Title:** Mechanical work performed by distal foot-ankle and proximal knee-hip segments
- 2 during anticipated and unanticipated cutting

Article type: Short communications

Bernard X.W. Liew, PhD ^a

Laura Sullivan BSc (Honours)^b

Susan Morris, PhD ^b

Kevin Netto, PhD ^b

^a School of Sport, Rehabilitation and Exercise Sciences, University of Essex, Colchester, Essex, CO4 3SQ, United Kingdom

^b School of Physiotherapy and Exercise Sciences, Curtin University, GPO Box U1987, Perth, WA 6845, Australia.

Corresponding author: Dr Bernard Liew, S School of Sport, Rehabilitation and Exercise Sciences, University of Essex, Colchester, Essex, CO4 3SQ, United Kingdom; E-mail: bl19622@essex.ac.uk, liew_xwb@hotmail.com

Abstract word count: 250

Word count: 2000

Figures and Table: 4 figures and 1 table

Supplementary material: 2

3

4 **Abstract**

5 Side-step cutting is a common evasive maneuver which is typically performed
6 without prior anticipation. Studies quantifying joint work and its inter-joint proportions in
7 cutting have not accounted for work done by the foot, even though this segment has been
8 shown to be an important source of mechanical work in walking, running, and landing. The
9 aims of this study were to: (1) quantify the magnitude of foot work performed and provide a
10 more precise account of percentage joint work during cutting, and (2) examine the effect, a
11 lack of anticipation had on these variables. Three-dimensional motion capture with
12 forceplates were used to assess the cutting behaviour of 17 healthy participants. All
13 participants performed a 45° cut with an approach speed of 4 m/s. Hip, knee, and ankle joint
14 work were calculated using inverse dynamics; whilst foot work was quantified using the
15 Unified-Deformable foot method. The foot contributed up to 12.45% and 3.09% of total limb
16 negative and positive work, respectively. Unanticipated cutting significantly reduced ankle
17 positive work (-0.09 J/kg [95% CI -0.13 to -0.06], $P < 0.001$) and significantly reduced
18 percentage ankle positive work (-2.17% [95% CI -3.47 to -0.86], $P = 0.001$). The foot
19 performs as much negative work as the hip but had only a minor contribution to positive
20 work during cutting. Anticipation had a negligible influence on joint work and its inter-joint
21 proportions. The foot should not be neglected in understanding whole-body dynamics during
22 cutting, with greater understanding of its function potentially useful for informing athletic
23 footwear design and cutting technique.

24 **Key Words:** Side-step cutting; Change of Direction; Joint work; Coordination.

25

26 **1. Introduction**

27 Side-step cutting is commonly employed in sport, and mechanical work must be
28 performed to alter the direction of movement (Havens and Sigward, 2015). More than a third
29 of the negative work performed during cutting happens at the knee and ankle joints while
30 more than a third of the positive work is performed at the hip and ankle (David et al., 2018).
31 Across walking, running and drop landing, the foot can contribute up to 22% of the total
32 lower limb joint work (Arch and Fylstra, 2016; Olsen et al., 2019; Zelik et al., 2015). A
33 previous study has reported that a reduction in distal ankle loading resulted in a compensatory
34 increase in proximal knee loading during cutting (Wannop et al., 2014). Similar alterations in
35 distal foot work may incur similar proximal compensatory mechanisms, although foot work
36 during cutting has not been reported. Understanding the mechanical function of the foot in
37 cutting is important as it may have implications for athletic footwear design as well as cutting
38 technique modification (Worobets and Wannop, 2015).

39 When the direction of the cut is unanticipated, the roles of individual joints can
40 change. When more time is allowed for cutting (i.e. anticipated), participants can pre-
41 orientate their centre of mass (COM) prior to planting the cutting limb, requiring less turning
42 and force to occur during the actual cut (Lee et al., 2017). In unanticipated cutting, the cutting
43 foot is positioned further laterally from the COM, to generate more force in order to redirect
44 the COM direction (Lee et al., 2017). Greater cutting width in unanticipated cutting would
45 require greater hip mobility, and increase the external ground reaction force (GRF) lever arm
46 to the hip joint centre, and contributing to greater hip kinetics compared to anticipated cutting
47 (Meinerz et al., 2015; Whyte et al., 2018).

48 The primary purpose of this study was to quantify the magnitude of foot work during
49 cutting and examine the effect, a lack of anticipation had on foot work. We hypothesized that
50 like the ankle (Brown et al., 2014), anticipation would have no effect on foot work. The
51 secondary purpose of this study was to provide a more precise account of the percentage joint
52 work performed during cutting and examine the effect, a lack of anticipation had on changes
53 to percentage joint work. We hypothesized that hip negative work and its percentage would
54 increase with unanticipated compared to anticipated cutting.

55 **2. Methods**

56 2.1. Participants

57 Seventeen healthy participants were included for this study (10 M, 7 F, mean
58 (standard deviation (SD)) age of 22.5 (3.1) years, height of 1.7 (0.1) m, body mass of 68.0
59 (12.0) kg). Participants were included if they were free from any lower limb injuries or pain
60 in the past 3 months, or any previous knee ligamentous injuries, and females who were
61 pregnant. All participants gave written consent and ethical approval was provided by Curtin
62 University Human Research Ethics Committee (RD-41-14).

63 2.2. Side-step cutting

64 Participants performed cutting in their preferred running shoes, to facilitate a more
65 natural cutting pattern, compared with cutting in a standardized footwear. For all trials,
66 participants cut on the leg they would stand on when they kicked a ball (Rahnama et al.,
67 2005), which was the left limb for all participants. Cutting was performed over two
68 anticipatory conditions, the order of which was randomized.

69 For anticipated condition, participants were instructed to cut with their left foot on a
70 force plate (AMTI, Watertown, MA), in the direction 45° towards the right (Figure 1). In the
71 unanticipated condition, either speed gate four (G4) or G3 would be triggered when
72 participants crossed G2. Participants would cut toward the right if G4 was triggered but
73 continue running straight if G3 was triggered. The elapsed time from the trigger at G2, to the
74 appearance of the triggered light in G3 or G4 was 600 ms (Brown et al., 2014).

75 A minimum of a 10 m run up distance was provided to participants to reach the
76 desired speed of 4 m/s (+/- 10%). A successful trial was accepted if the participant performed
77 the cutting manoeuvre within the velocity range and demarcated floor strip (Figure 1). A
78 minimum of three successful trials for each condition was accepted, with an inter-trial rest
79 duration of 60 s provided.

80 2.3. Data measurement and processing

81 Reflective markers were placed on the thorax, pelvis, bilateral thigh, shank and foot
82 segments (supplementary material). Kinematics were captured using an 18-camera motion
83 analysis system (VICON T-series, Oxford Metrics, UK) at 250 Hz with synchronised GRF at
84 1000 Hz. Both kinematic and force data were low-pass filtered (4th Order, zero lag, at 18 Hz).
85 Initial contact and toe-off events were determined using 20 N force plate threshold.

86 Foot power (P_{foot}) was calculated using the Unified-Deformable foot method (see
87 supplementary for method) (Takahashi et al., 2012). The term “foot” presently reflects the
88 foot-shoe complex, and foot work thus represents the work performed by both the foot and
89 the shoe (Arch and Fystra, 2016; Bruening et al., 2018). Inverse dynamics was used to derive
90 joint power of the ankle, knee and hip (Liew et al., 2018). Total negative joint work was
91 calculated by summation of the negative work performed by the foot, ankle, knee, and hip;

92 and similar calculations were performed to derive total positive joint work (Liew et al.,
93 2016). Joint work was scaled to a percentage of a participant's body mass. Percentage
94 negative and positive work was derived by taking each work value as a fraction of total
95 negative and positive work.

96 2.4. Statistical analysis

97 Spatiotemporal characteristics of approach COM speed, cut angle, initial contact and
98 toe-off COM speed, and stance duration are summarized in Table 1. COM speed was
99 measured by the COM anterior-posterior direction speed after passing G1 (Figure 1).
100 Differences between cue conditions in the six spatiotemporal variables were assessed using
101 linear mixed models, as described below.

102 The response variables were the negative and positive work, as well as their
103 corresponding percentage total negative and positive limb work, of the foot, ankle, knee, and
104 hip joints. The effect of anticipation on the response variables was modelled using linear
105 mixed models, and a subject-specific intercept was included in the models. Significance for
106 each fixed effect predictor was determined using an alpha of 0.05. All statistical analyses
107 were performed in R software.

108 3. Results

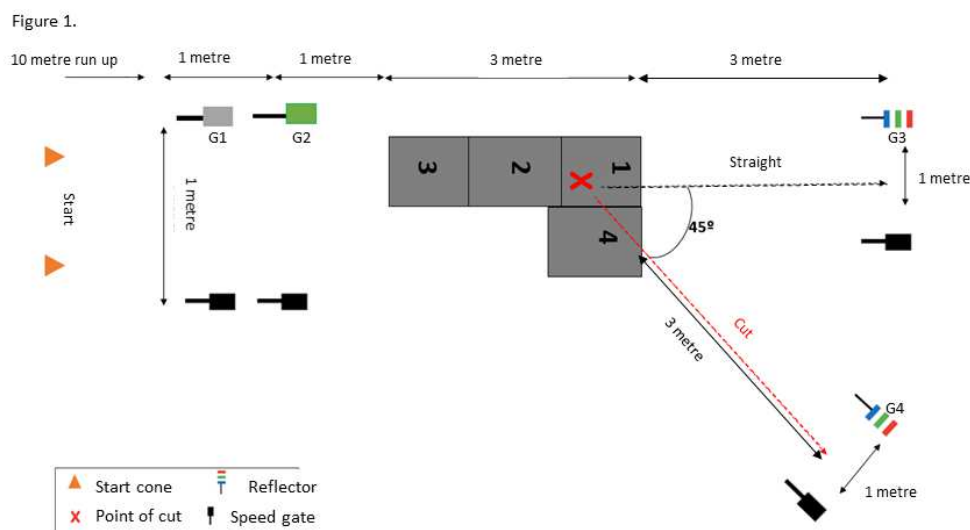
109 All spatiotemporal variables were significantly different between cue conditions
110 (Table 1). The foot contributed between 0.36 to 0.37 J/kg and 0.06 to 0.07 J/kg of negative
111 and positive work, respectively (Figure 3); which constituted between 12.42 to 12.45% and
112 2.62 to 3.09% of total limb negative and positive work, respectively (Figure 4). Compared to
113 anticipated, unanticipated cutting significantly reduced ankle negative work (by a mean and
114 95% confidence interval [CI] of -0.07 J/kg [-0.11 to -0.03], $P = 0.001$), ankle positive work

115 (by -0.09 J/kg [95% CI -0.13 to -0.06], $P < 0.001$), and percentage ankle positive work (by -
 116 2.17% [95% CI -3.47 to -0.86], $P = 0.001$). Unanticipated cutting significantly increased foot
 117 positive work (by 0.01 J/kg [95% CI 0.003 to 0.02], $P = 0.003$), percentage foot positive
 118 work (by 0.47% [95% CI 0.20 to 0.74]), and percentage hip negative work (by 1.34% [95%
 119 CI 0.22 to 2.47]).

120 Table 1. Spatiotemporal characteristics of cutting

	Anticipated	Unanticipated	Statistical value
Approach speed ^{m1}	4.217 (0.360)	3.908 (0.339)	$P < 0.001$
Initial contact speed (m/s) ^{m2}	3.539 (0.425)	3.393 (0.437)	$P < 0.001$
Toe-off speed (m/s) ^{m3}	2.697 (0.306)	2.576 (0.310)	$P < 0.001$
Turn angle ($^{\circ}$) ^{m4}	41.124 (5.558)	38.190 (5.956)	$P < 0.001$
Cut angle ($^{\circ}$) ^{m5}	25.308 (7.476)	22.297 (9.074)	$P = 0.007$
Stance duration (s)	0.269 (0.039)	0.282 (0.052)	$P < 0.001$

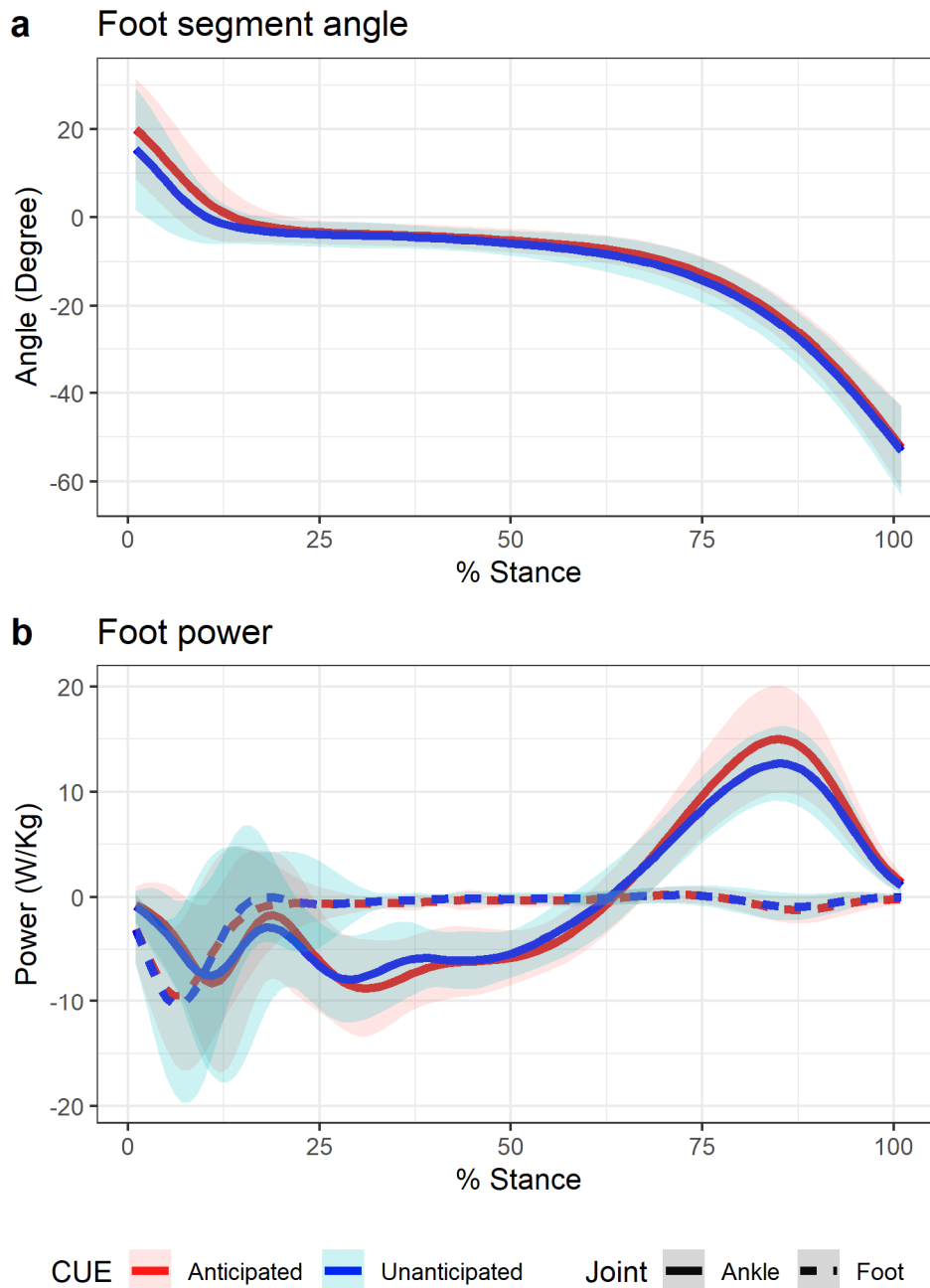
m1 = 10-frame average of centre of mass (COM) of model velocity in LAB's Y-axis (direction of travel) when COM was visually inspected to be straight.
 m2 = 10-frame average of the resultant scalar of the three-dimensional COM velocity vector before initial contact, inclusive.
 m3 = 10-frame average of the resultant scalar of the three-dimensional COM velocity vector after toe-off, inclusive.
 m4 = inner dot product of two COM velocity vectors: vector one (between 1st and 10th frame of m1) and vector two (between 1st and 10th frame of m3)
 m5 = inner dot product of two COM velocity vectors: vector one (between 1st and 10th frame of m2) and vector two (between 1st and 10th frame of m3)



121

122

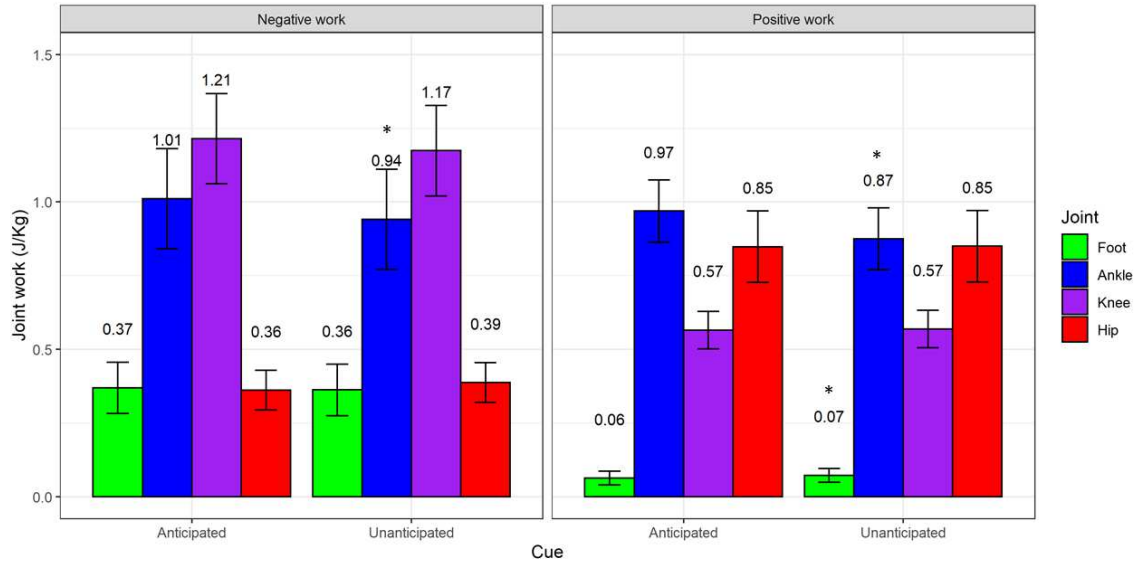
Figure 1



123

124

Figure 2

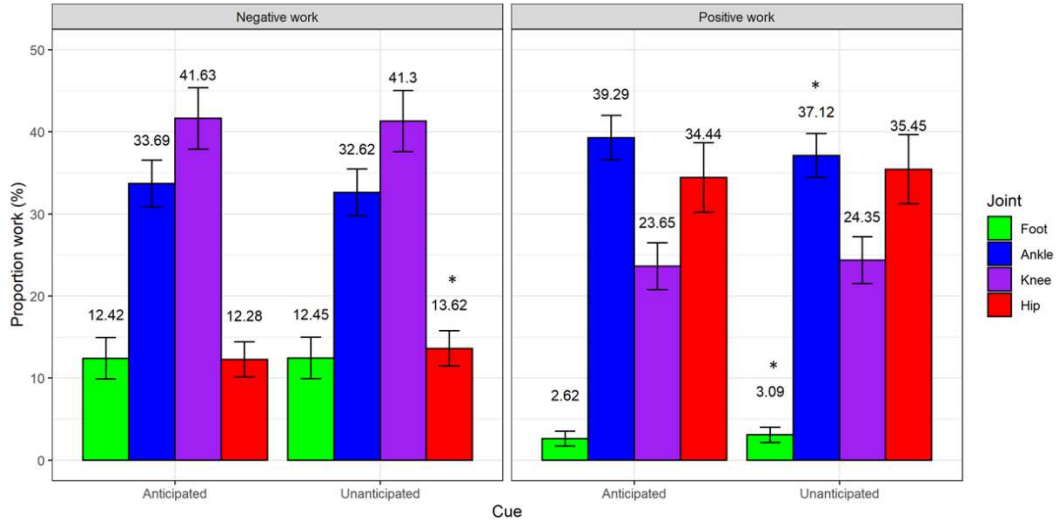


125

126

Figure 3

127



128

129

Figure 4

130

4. Discussion

131 This paper quantified the role of the foot during anticipated and unanticipated cutting.
132 Against the first hypothesis, unanticipated cutting reduced ankle negative work and positive
133 work, and significantly increased foot positive work. In partial agreement with our second
134 hypothesis, unanticipated cutting only significantly increased percentage hip negative work
135 compared to anticipated cutting.

136 A previous review reported that slower approach speeds are associated with reduced
137 joint kinetics (Dos'Santos et al., 2018). It is unlikely that the alterations in mechanical work
138 between anticipatory cues was driven solely by a reduction in approach speed, given that an
139 increase in positive foot work with unanticipated cutting was observed compared to
140 anticipated cutting. The magnitude of influence of anticipatory cues on joint work may be
141 functionally meaningful. This is supported by previous work which found that a 0.01 J/kg
142 increase in foot positive work, and a 0.06 J/kg increase in ankle positive work are associated
143 with a 1 m/s increase in running speed (Jin and Hahn, 2018; Kelly et al., 2018a). However, it
144 is unlikely that the influence of anticipatory cues on percentage joint work ($< 2\%$) is
145 meaningful, considering that changing the foot strike pattern altered percentage ankle
146 negative work in running by 22% (Stearne et al., 2014). A more precise assessment of the
147 contribution of anticipatory cues on cutting mechanics may require controlling the approach
148 speed, which should be further investigated.

149 Negative work performed by lower limb muscles is used for braking, with greater
150 braking GRF leading to sharper cutting angles (Dos'Santos et al., 2018). Given that the foot
151 performs as much negative work as the hip, management of foot work may be as important as
152 management of hip work in optimizing cutting performance, especially at sharper cutting
153 angles. The functional importance of the foot may increase when cutting with a forefoot
154 compared to a rearfoot landing strategy (Donnelly et al., 2017). Switching from a rearfoot to

155 a forefoot strike pattern in running increased negative foot work (Kelly et al., 2018b), and we
156 predict that a similar technique switch in cutting would similarly increase negative foot work.
157 Given that an increase in negative ankle work has been linked to greater risk of posterior calf
158 injuries in running (Rice and Patel, 2017), an increase in negative foot work when cutting
159 with a forefoot strike technique may increase the risk of foot injuries.

160 The present study's finding of greater percentage hip negative work during
161 unanticipated compared to anticipated cutting has indirect support from some studies
162 (Meinerz et al., 2015; Whyte et al., 2018), but not in others (Brown et al., 2014). Whyte et al.
163 (2018) reported greater hip negative work in the transverse plane, with no change in negative
164 work by the knee and ankle reported during unanticipated compared to anticipated cutting.
165 Meinerz et al. (2015) reported a shift in net work performed towards a more negative value at
166 the hip, but a less negative value at the knee and ankle during unanticipated compared to
167 anticipated cutting. The lack of effect anticipatory cues had on hip negative work in Brown et
168 al. (2014) could be that the influence of anticipatory cues on cutting was investigated during
169 load carriage (Brown et al., 2014). Load carriage has been shown to increase leg stiffness
170 (Lobb et al., 2019), which may involve an increase in hip stiffness, a reduction in hip
171 displacement and hence negative hip work remained invariant.

172 A limitation of the present study was that our methods cannot partition work
173 performed by individual structures within the foot. Based on a previous study in walking, foot
174 power in the first half of stance was attributed to structures proximal to the midfoot
175 (Takahashi et al., 2017), which is supported by our foot power waveforms (Figure 2).
176 Another limitation could be that standardized footwear was not prescribed, which could
177 increase inter-participant variability in joint work estimates. When running with a prescribed
178 footwear, a previous study reported a predicted 95% CI range in hip, knee, and ankle negative

179 work of 0.15, 0.19, 0.15 J/kg, respectively (Hashizume et al., 2018). Our predicted 95% CI
180 range of the same variables during anticipated cutting was 0.34, 0.30, 0.13 J/kg, respectively.
181 However, a study in walking reported similar inter-participant standard deviations of ankle
182 work when comparing walking barefooted versus in their preferred shoe (Farinelli et al.,
183 2019). It may be argued that using a preferred shoe would produce more ecologically valid
184 understandings of cutting mechanics, than cutting in a prescribed footwear. Regardless,
185 differences in foot mechanical work between different footwear types should be explored in
186 future studies.

187 **5. Conclusion**

188 The foot performed less than 14% of the negative work and less than 3% of positive
189 work, with the former representing as much percentage negative work performed at the hip.
190 The foot should not be neglected in understanding whole-body dynamics during cutting, with
191 greater understanding of its function potentially useful for informing athletic footwear design.

192 **Acknowledgements.** None.

193 **Conflict of interest and source of funding.** No funds were received in support of
194 this work. No benefits in any form have been or will be received from a commercial party
195 related directly or indirectly to the subject of this manuscript.

196

197 **Figure captions**

198 Figure 1. Schematic layout of the laboratory and equipment (light gates [G] and
199 forceplates [greyed squares]) during experimental testing. Participants always approached the
200 cut in the direction from forceplate 3 to 1.

201 Figure 2. Observed mean values with error bars as one standard deviation of (a)
202 sagittal plane foot-ground angle (+ value = dorsiflexion), and (B) ankle and foot power
203 during the stance phase of cutting.

204 Figure 3. Predicted mean values with error bars as 95% confidence interval of the
205 negative and positive work performed by each joint during cutting. Values are predicted
206 using the linear mixed models. Values above the barplot reflect the mean values. *
207 Significant difference between anticipated an unanticipated cutting.

208 Figure 4. Predicted mean values with error bars as 95% confidence interval of the
209 percentage negative and positive work performed by each joint during cutting. Values are
210 predicted using the linear mixed models. Values above the barplot reflect the mean values. *
211 Significant difference between anticipated an unanticipated cutting.

212

213 **References**

214

215

216 Arch, E.S., Fylstra, B.L., 2016. Combined Ankle-foot Energetics are Conserved when Distal
217 Foot Energy Absorption is Minimized. *J Appl Biomech*, 1-21.

218 Brown, T.N., O'Donovan, M., Hasselquist, L., Corner, B., Schiffman, J.M., 2014. Soldier-
219 relevant loads impact lower limb biomechanics during anticipated and unanticipated
220 single-leg cutting movements. *J Biomech* 47, 3494-501.

221 Bruening, D.A., Pohl, M.B., Takahashi, K.Z., Barrios, J.A., 2018. Midtarsal locking, the
222 windlass mechanism, and running strike pattern: A kinematic and kinetic assessment.
223 *J Biomech* 73, 185-91.

- 224 David, S., Mundt, M., Komnik, I., Potthast, W., 2018. Understanding cutting maneuvers –
225 The mechanical consequence of preparatory strategies and foot strike pattern. *Hum*
226 *Mov Sci* 62, 202-10.
- 227 Donnelly, C.J., Chinnasee, C., Weir, G., Sasimontonkul, S., Alderson, J., 2017. Joint
228 dynamics of rear- and fore-foot unplanned sidestepping. *J Sci Med Sport* 20, 32-7.
- 229 Dos'Santos, T., Thomas, C., Comfort, P., Jones, P.A., 2018. The Effect of Angle and Velocity
230 on Change of Direction Biomechanics: An Angle-Velocity Trade-Off. *Sports Med* 48,
231 2235-53.
- 232 Farinelli, V., Hosseinzadeh, L., Palmisano, C., Frigo, C., 2019. An easily applicable method
233 to analyse the ankle-foot power absorption and production during walking. *Gait*
234 *Posture* 71, 56-61.
- 235 Hashizume, S., Hobara, H., Kobayashi, Y., Tada, M., Mochimaru, M., 2018. Inter-Individual
236 Variability in The Joint Negative Work During Running. *Sports medicine*
237 *international open* 2, E157-e62.
- 238 Havens, K.L., Sigward, S.M., 2015. Joint and segmental mechanics differ between cutting
239 maneuvers in skilled athletes. *Gait Posture* 41, 33-8.
- 240 Jin, L., Hahn, M.E., 2018. Modulation of lower extremity joint stiffness, work and power at
241 different walking and running speeds. *Hum Mov Sci* 58, 1-9.
- 242 Kelly, L.A., Cresswell, A.G., Farris, D.J., 2018a. The energetic behaviour of the human foot
243 across a range of running speeds. *Sci Rep* 8, 10576.
- 244 Kelly, L.A., Farris, D.J., Lichtwark, G.A., Cresswell, A.G., 2018b. The Influence of Foot-
245 Strike Technique on the Neuromechanical Function of the Foot. *Med Sci Sports Exerc*
246 50, 98-108.
- 247 Lee, M.J., Lloyd, D.G., Lay, B.S., Bourke, P.D., Alderson, J.A., 2017. Different visual
248 stimuli affect body reorientation strategies during sidestepping. *Scand J Med Sci*
249 *Sports* 27, 492-500.

250 Liew, B.X.W., Drovandi, C.C., Clifford, S., Keogh, J.W.L., Morris, S., Netto, K., 2018.
251 Joint-level energetics differentiate isoinertial from speed-power resistance training-a
252 Bayesian analysis. *PeerJ* 6, e4620.

253 Liew, B.X.W., Morris, S., Netto, K., 2016. The effects of load carriage on joint work at
254 different running velocities. *J Biomech* 49, 3275-80.

255 Lobb, N.J., Fain, A.C., Seymore, K.D., Brown, T.N., 2019. Sex and stride length impact leg
256 stiffness and ground reaction forces when running with body borne load. *J Biomech*
257 86, 96-101.

258 Meinerz, C.M., Malloy, P., Geiser, C.F., Kipp, K., 2015. Anticipatory Effects on Lower
259 Extremity Neuromechanics During a Cutting Task. *J Athl Train* 50, 905-13.

260 Olsen, M.T., Bruening, D.A., Johnson, A.W., Ridge, S.T., 2019. The Role of the Midfoot in
261 Drop Landings. *Med Sci Sports Exerc* 51, 114-22.

262 Rahnama, N., Lees, A., Bambaecichi, E., 2005. Comparison of muscle strength and flexibility
263 between the preferred and non-preferred leg in English soccer players. *Ergonomics*
264 48, 1568-75.

265 Rice, H., Patel, M., 2017. Manipulation of Foot Strike and Footwear Increases Achilles
266 Tendon Loading During Running. *Am J Sports Med* 45, 2411-7.

267 Stearne, S.M., Alderson, J.A., Green, B.A., Donnelly, C.J., Rubenson, J., 2014. Joint kinetics
268 in rearfoot versus forefoot running: implications of switching technique. *Med Sci*
269 *Sports Exerc* 46, 1578-87.

270 Takahashi, K.Z., Kepple, T.M., Stanhope, S.J., 2012. A unified deformable (UD) segment
271 model for quantifying total power of anatomical and prosthetic below-knee structures
272 during stance in gait. *J Biomech* 45, 2662-7.

273 Takahashi, K.Z., Worster, K., Bruening, D.A., 2017. Energy neutral: the human foot and
274 ankle subsections combine to produce near zero net mechanical work during walking.
275 *Sci Rep* 7, 15404.

276 Wannop, J.W., Graf, E.S., Stefanyshyn, D.J., 2014. The effect of lateral banking on the
277 kinematics and kinetics of the lower extremity during lateral cutting movements. *Hum*
278 *Mov Sci* 33, 97-107.

279 Whyte, E.F., Richter, C., O'Connor, S., Moran, K.A., 2018. Investigation of the Effects of
280 High-Intensity, Intermittent Exercise and Unanticipation on Trunk and Lower Limb
281 Biomechanics During a Side-Cutting Maneuver Using Statistical Parametric
282 Mapping. *J Strength Cond Res* 32, 1583-93.

283 Worobets, J., Wannop, J.W., 2015. Influence of basketball shoe mass, outsole traction, and
284 forefoot bending stiffness on three athletic movements. *Sports Biomech* 14, 351-60.

285 Zelik, K.E., Takahashi, K.Z., Sawicki, G.S., 2015. Six degree-of-freedom analysis of hip,
286 knee, ankle and foot provides updated understanding of biomechanical work during
287 human walking. *J Exp Biol* 218, 876-86.

288