

Visual discomfort from flicker: Effects of mean light level and contrast

Sanae Yoshimoto ^{a,*}, Fang Jiang ^b, Tatsuto Takeuchi ^c, Arnold J. Wilkins ^d, Michael A. Webster ^b

^aHiroshima University, ^bUniversity of Nevada, Reno, ^cJapan Women's University, ^dUniversity of Essex

^aGraduate School of Integrated Arts and Sciences, Hiroshima University, Kagamiyama 1-7-1, Higashi-Hiroshima, Hiroshima 739-8521, Japan

^bDepartment of Psychology, University of Nevada, Reno, 1664 N. Virginia Street, Reno, Nevada 89557, USA

^cDepartment of Psychology, Japan Women's University, Tama-ku Nishi-ikuta 1-1-1, Kawasaki, Kanagawa 214-8565, Japan

^dDepartment of Psychology, University of Essex, Wivenhoe Park, Colchester CO4 3SQ, UK

* Corresponding author

Author Note:

Sanae Yoshimoto, email: syoshimo@hiroshima-u.ac.jp

Fang Jiang, email: fangj@unr.edu

Tatsuto Takeuchi, email: takeuchi@fc.jwu.ac.jp

Arnold J. Wilkins, email: arnold@essex.ac.uk

Michael A. Webster, email: mwebster@unr.edu

Correspondence:

Sanae Yoshimoto

Hiroshima University

Kagamiyama 1-7-1, Higashi-Hiroshima, Hiroshima 739-8521, Japan

+81-82-422-7111

syoshimo@hiroshima-u.ac.jp

Abstract

Uncomfortable images generally have a particular spatial structure, which deviates from a reciprocal relationship between amplitude and spatial frequency (f) in the Fourier domain ($1/f$). Although flickering patterns with similar temporal structure also appear uncomfortable, the discomfort is affected by not only the amplitude spectrum but also the phase spectrum. Here we examined how discomfort from flicker with differing temporal profiles also varies as a function of the mean light level and luminance contrast of the stimulus. Participants were asked to rate discomfort for a 17° flickering uniform field at different light levels from scotopic to photopic. The flicker waveform was varied with a square wave or random phase spectrum and filtered by modulating the slope of the amplitude spectrum relative to $1/f$. At photopic levels, the $1/f$ square wave flicker appeared most comfortable, whereas the discomfort from the random flicker increased monotonically when the slope of the amplitude spectrum was shallow. This special status for the $1/f$ square wave condition was limited to photopic light levels. At the lower mesopic or scotopic levels, the effect of phase spectrum on the discomfort was diminished, with both phase spectra showing a monotonic change with the slope of the amplitude spectrum. We show that these changes cannot be accounted for by changes in the effective luminance contrast of the stimuli or by the responses from a linear model based on the temporal impulse responses under different light levels. However, discomfort from flicker is robustly correlated with judgments of the perceived naturalness of flicker across different contrasts and mean luminance levels.

Keywords: visual discomfort, flicker, retinal illuminance, contrast, $1/f$ amplitude spectrum

1. Introduction

Some visual patterns can induce adverse effects (e.g., migraine, headache, epileptic seizures) in photosensitive observers and appear uncomfortable for normal observers, inducing so-called visual discomfort (Wilkins, 1995; 2016). Visual discomfort refers not only to clinical responses but also any unpleasant viewing experiences such as visual disturbance, annoyance, and irritation. Many aspects of visual discomfort from images, such as certain geometric patterns (Chatrian et al., 1970; Fernandez & Wilkins, 2008; Juricevic et al., 2010; Marcus & Soso, 1989; O'Hare & Hibbard, 2011, 2013; Wilkins, 1995; Wilkins et al., 1984), artistic paintings (Fernandez & Wilkins, 2008), and natural images containing clusters of small objects (Cole & Wilkins, 2013), have been studied.

Fernandez and Wilkins (2008) asked participants to rate visual discomfort from filtered noise and artistic images. They found that the images with an excess energy at the middle spatial frequencies were rated as more uncomfortable and also showed that the amplitude spectrum rather than phase spectrum determined the discomfort by replacing the phase spectra of uncomfortable images with those of comfortable images. Juricevic et al. (2010) also measured discomfort ratings for filtered noise patterns and showed that the patterns appeared most comfortable when their amplitude fell proportionally as spatial frequency (f) increased ($1/f$ or -1 slope for log amplitude and log frequency). Natural images generally have this $1/f$ spatial structure (Atick, 1990; Atick & Redlich, 1992; Barlow, 1981; Field, 1987; Lennie, 2003; Olshausen & Field, 2004; Párraga, Troscianko, & Tolhurst, 2000; Srinivasan, Laughlin, & Dubs, 1982), and thus the discomfort could reflect a response to stimuli that the visual system does not process efficiently (Wilkins & Hibbard, 2014).

Diffuse flicker and flickering patterns can also induce visual discomfort or seizures (Binnie, Findlay, & Wilkins, 1985; Fisher et al., 2005; Harding & Harding, 2005; Harding & Jeavons, 1994; Lin et al., 2014; Wilkins, 1995; Yoshimoto et al., 2017; 2019). Flickering patterns at temporal frequencies at which humans are most sensitive can produce discomfort in normal observers (Lin et al., 2014) and headaches or seizures in photosensitive observers (Harding & Jeavons, 1994). Yoshimoto et al. (2017) measured discomfort for flickering patterns with different amplitude and phase spectra and showed that the discomfort increased when the temporal structure deviated from $1/f$ amplitude spectrum. Like spatial variations, temporal variations in nature generally have a $1/f$ temporal structure, that is, an amplitude spectrum with reciprocal of temporal frequency (Billock, de Guzman, & Scott Kelso, 2001; Dong & Atick, 1995; Isherwood et al., 2018; van Hateren & van der Schaaf, 1996).

1 Therefore, it also may be possible to predict discomfort from time varying patterns by their temporal
2 amplitude spectra.

3 However, Yoshimoto et al. (2017) showed that discomfort from flickering patterns was also
4 strongly influenced by their phase spectra, and thus potentially different from the discomfort from
5 spatial stimuli (Fernandez & Wilkins, 2008). When the phase of each temporal frequency component
6 was fixed at a specific value (e.g., 0° for square wave transitions), reported discomfort was lowest for
7 flicker with a $1/f$ spectrum, paralleling the effects for spatial stimuli. On the other hand, when the
8 phase of the harmonics was randomized, discomfort increased monotonically as the slope of the
9 amplitude spectrum decreased, without a minimum at $1/f$. Thus unlike the spatial domain, in the
10 temporal domain not only the amplitude spectrum but also the phase spectrum may play an important
11 role in visual discomfort.

12 In this study, we examined two further potential influences on discomfort from flicker: the
13 mean light level and the luminance contrast of the stimulus. Most previous studies of visual
14 discomfort have been conducted with high-contrast stimuli at photopic light levels, at which primarily
15 only the cones operate. However in the natural environment, ambient light levels change by a factor of
16 10^{11} between day and night (Hood & Finkelstein, 1986; Stockman & Sharpe, 2006), and the range of
17 mesopic and scotopic light levels, at which rods operate, extends over a range of 10^6 . Thus,
18 understanding of the characteristic of discomfort induced by visual information at low light levels is
19 important from both scientific and practical viewpoints.

20 The temporal response of the visual system becomes more sluggish at lower light levels as
21 vision shifts from photopic to scotopic levels (Burr & Morrone, 1993; Hess, 1990; Robert et al., 1996;
22 Kelly, 1971; Macleod, 1972; Plainis & Murray, 2000; Snowden, Hess, & Waugh, 1995; Swanson et
23 al., 1987; Walkey, Harlow, & Barbur, 2006). The temporal response shifts from band-pass at high
24 light levels to low-pass at low light levels. In many cases, the differences in temporal properties
25 between cone and rod vision can account well for the change in perception of temporally-varying
26 patterns such as moving patterns (Billino, Bremmer, & Gegenfurtner, 2008; Challinor & Mather,
27 2010; Dawson & Lollo, 1990; Gegenfurtner, Mayser, & Sharpe, 2000; Grossman & Blake, 1999;
28 Hammett et al., 2007; Pritchard & Hammett, 2012; Sheliga et al., 2006; Takeuchi & De Valois, 1997,
29 2009; Vaziri-Pashkam & Cavanagh, 2008; Yoshimoto, Okajima, & Takeuchi, 2016; Yoshimoto &
30 Takeuchi, 2013). For example, Takeuchi and De Valois (1997, 2009) measured the perceived direction
31 of apparent motion at low light levels and showed that the estimated transmission delays in rod
32 pathways can predict the perceived direction of motion. However, in other cases the perception of

moving patterns is invariant with light level (Hess & Zaharia, 2010; Lankheet et al., 2000; Lankheet, van Doorn, & van de Grind, 2002; van de Grind, Koenderink, & van Doorn, 2000). van de Grind et al. (2000) measured the coherent motion threshold and showed that sensitivity was robust across light levels.

Reducing the mean light level from photopic to scotopic decreases the visibility of visual stimuli. Likewise, decreasing the luminance contrast of the stimuli degrades the visibility of stimuli when the mean light level is kept constant. The effect of luminance contrast on temporally-varying patterns, such as visual motion stimuli, has been widely studied. As in the case of the mean light level described above, there are both studies showing that motion perception is invariant with the luminance contrast as well as studies showing that motion perception varies with the reduction of luminance contrast (Derrington & Goddard, 1989; Edwards, Badcock, & Nishida, 1996; Nakayama & Silverman, 1985; Nishida, Ashida, & Sato, 1997; Ohtani, Ido, & Ejima, 1995; Pantle & Sekuler, 1969; Raymond & Darcangelo, 1990). For example, visual motion measurements, such as the minimum-motion threshold (Nakayama & Silverman, 1985) saturates at low-luminance contrast, whereas other motion phenomena, such as simultaneous motion contrast (Raymond & Darcangelo, 1990) do not saturate at low contrast; thus a higher stimulus contrast induces a stronger perceptual effect. These studies have shown both invariant and variant aspects of visual motion perception when the mean light level or the luminance contrast of the stimulus was varied. We examined how visual discomfort induced by flicker varies (or does not vary) depending on those two parameters.

To explore the underlying mechanisms potentially contributing to discomfort from flicker, we also examined the relationship between discomfort ratings and a number of additional variables. These included the effect of visibility (or effective contrast) of the flicker, the perceived naturalness of the flicker, and the visual responses predicted by a linear model of the temporal contrast response function of the visual system.

2. Methods

2.1. Participants

For the main experiment, eighteen students at Hiroshima University volunteered to participate (mean age = 21.2 years, range 19–28 years, 11 female). Sixteen different students (mean age = 21.1 years, range 20–23 years, 12 female) participated in a separate “naturalness” judgment experiment described below. All had normal or corrected-to-normal vision, and all were naïve to the

purpose of the experiment. The study was conducted in accordance with the protocols approved by the Institutional Research and Ethics Committee of Hiroshima University, and with the Declaration of Helsinki. Written informed consent was obtained from each participant before entry into the study.

2.2. Apparatus

Visual stimuli were generated on a PC using MathWorks MATLAB and the Psychophysics Toolbox (Brainard, 1997; Pelli, 1997), and presented on a 27-inch EIZO FS2735 liquid crystal display (LCD) at a 8-bit gray-level spatial resolution of 2560×1440 pixels. The refresh rate of the display was 120 Hz. The monitor output was gamma-corrected by a Cambridge Research Systems SpectroCAL MKII spectroradiometer. Neutral density filters were used to reduce the mean photopic luminance of the screen over a roughly 5 log unit range from 46.8 to 4.2, 0.35, 0.043, 0.0039, and 0.0006 cd/m^2 . The spectral emissions of the monitor phosphors were measured by the same spectroradiometer to convert photopic troland (Td) to scotopic Td. A chin and head rest was used to stabilize the head position. Pupil diameter was monitored by an Arrington Research ViewPoint EyeTracker 90 fps USB system and software. The sampling rate of this infrared-video-based eye-tracking device was 90 Hz. Participants viewed the monitor with their right eyes from a distance of 57 cm in a dark room, while their left eyes were occluded by an eye patch.

2.3. Visual stimulus

Stimuli similar to those used in Yoshimoto et al. (2017) were tested to compare with our previous findings. The luminance in a 17° uniform square field was changed according to the waveform consisting of a 1 Hz fundamental frequency and odd harmonics up to 59 Hz, close to the temporal cut-off frequency under photopic light levels (Kelly, 1961). The flickering field was filtered in the temporal frequency domain and then displayed on a full-screen gray background with the same chromaticity (CIE 1931; $x = 0.32$ and $y = 0.34$) and mean luminance. Fig. 1 shows a schematic drawing of waveforms and the amplitude spectra of the stimuli. The phase of each harmonic component was fixed at 0 (square wave phase spectrum) or randomized from 0 to 2π (random wave phase spectrum). The slope of the amplitude spectrum on a log-log scale was set to -1.4 , -1.2 , -1 , -0.8 , or -0.6 . The waveform with the phase fixed at 0 and with an amplitude slope of -1 approximated a square wave change in time. A steeper slope (< -1) decreased the relative amplitude of higher temporal frequencies resulting in blurred transitions, whereas a shallower slope (> -1) increased the

- 1 higher frequencies resulting in sharpened transitions. The contrast of each stimulus was rescaled after
- 2 filtering to maintain a constant root mean square (RMS) contrast of 0.2, 0.1, 0.05, or 0.02.

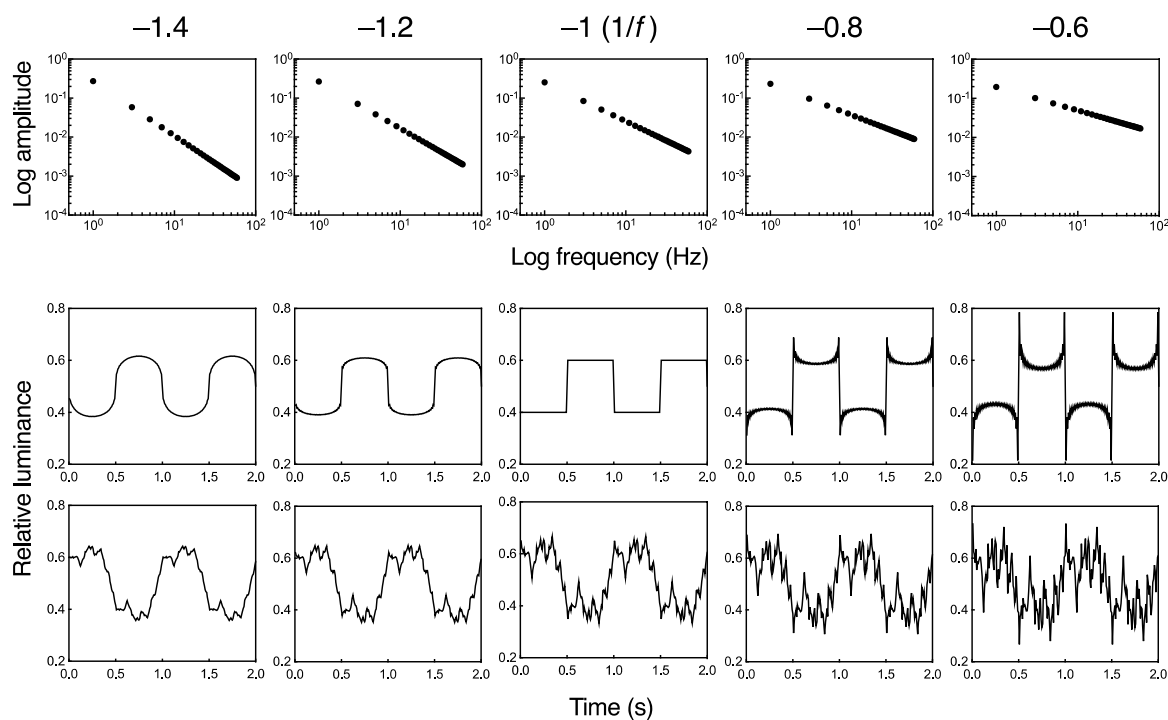


Fig. 1. Stimulus amplitude spectra (1st row). The slope of the amplitude spectrum ranged from -1.4 (left) to -0.6 (right) in 0.2 steps. The amplitude spectrum is plotted as a function of temporal frequency on log-log axes. Schematic drawing of the filtered waveform with square wave (2nd row) or random phase spectra (3rd row). The luminance level of the waveform (relative to a nominal mean level of 0.5) is plotted as a function of time. Movies illustrating the flicker for the different conditions are available in the online supplemental materials.

2.4. Procedure

For each of the following measurements, participants were dark-adapted for 30 min prior to the task. Each measurement began from the darkest adapting levels.

2.4.1. Pupil measurement

Participants' pupil diameters were monitored under the six luminance levels to compute the retinal illuminance. A blank field with a uniform space-averaged luminance was displayed for 5 s while measuring the pupil diameter. The participants were asked to fixate the center of the screen without blinking.

2.4.2. Discomfort measurement

Visual discomfort from the flickering stimuli were quantified by a rating scale similar to that used in previous studies (e.g., Fernandez & Wilkins, 2008; Juricevic et al., 2010, Yoshimoto et al., 2019). This scaling procedure has been commonly used to assess discomfort (Wilkins, 1995). Each stimulus was displayed for 2 s, followed by a gray screen with a 7-point scale (1 = none at all, 7 = a lot). The participants were asked to rate the discomfort of the stimulus by pressing the appropriate number key on the computer keyboard soon after the offset of the stimulus, typically within 1 s. No reference to the scale was made so the participants rated their subjective discomfort without guidance. After the key press, a 1-s uniform field with a space-averaged luminance similar to that of the stimulus was inserted as an intertrial interval. Each session was composed of 10 trials: two trials for each of the five test stimuli with different amplitude slopes, which were presented in random order. Each participant completed a session for each of the two phase spectra (square wave and random) both at each of the six luminance (46.8, 4.2, 0.35, 0.043, 0.0039, and 0.0006 cd/m^2) at the fixed RMS contrast of stimulus (0.2) and at each of the three RMS contrast (0.1, 0.05, and 0.02) at the fixed luminance (46.8 cd/m^2): 18 sessions in total. For the random waveforms, the phase of the harmonics was randomized on each session.

2.4.3. Contrast threshold measurement

To estimate the visibility (or effective contrast) of the stimulus at each light level and contrast, the thresholds for detecting the stimulus were measured using a two-alternative forced-choice task. The stimulus was displayed for 2 s, which was the same duration as in the discomfort measurement described above, in one of two successive intervals marked by one or two beeps. The

participants identified the interval (1st or 2nd) containing the stimulus by pressing the appropriate number key on the computer keyboard. Feedback for correct and incorrect responses were given by high- and low-frequency tones, respectively. The RMS contrast of the stimulus was varied according to the Quest procedure (Watson & Pelli, 1983), which places the most likely contrast on each trial estimated from previous trials and converges at a 75% correct level. In each session, the Quest sequential estimation was terminated after 40 trials. Each participant completed a session for each of the two phase spectra for each of the five amplitude spectra at each of the six luminance: 36 sessions in total. The measurement started from the darkest light levels. For the random waves, the phase of the harmonics was randomized on each session.

2.4.4. Naturalness evaluation

Since natural images generally have a $1/f$ structure in both the spatial and temporal domain, it is expected that perceived naturalness of the visual stimuli could be related to discomfort ratings. In our previous study, we found a close relationship between the discomfort rating and the appearance of naturalness for various types of diffuse flicker under photopic light levels (Yoshimoto et al., 2017). Here, we examined whether the link between naturalness and discomfort is robust for flicker with different contrasts and under different mean light levels.

The procedure was the same as in the discomfort rating and was again based on a 7-point scale. The participants were asked to rate the perceived naturalness of the stimulus by pressing the appropriate number key on the computer keyboard soon after the offset of the stimulus, typically within 1 s.

3. Results and Discussion

3.1. Pupil measurement

The mean pupil diameters during the 5-s recording were used to calculate the retinal illuminance. The mean retinal illuminance for the six luminance levels ranged from -1.8 to 3.2 log photopic Td. The conversion from photopic Td to scotopic Td was computed for the spectral power distribution of the monitor over a range of 380–780 nm. For the calculation, the CIE photopic $V(\lambda)$ modified by (Judd, 1951) and (Vos, 1978) and the CIE (1951) scotopic $V(\lambda)$ were used (Wyszecki & Stiles, 2000). The conversion factor for our monitor was 2.17. According to Hood and Finkelstein (1986) and Stockman and Sharpe (2006), the cone threshold is about -1.4 log photopic Td (-1.0 log

1 scotopic Td) while rod saturation is about 1.9 log photopic Td (2.3 log scotopic Td). Based on this
2 estimation, we assumed that the measured photopic retinal illuminance were categorized as one
3 photopic (2.9 photopic Td or 3.2 scotopic Td), four mesopic (1.9, 1.0, 0.23, and -0.77 log photopic Td
4 or 2.3, 1.4, 0.57, -0.44 log scotopic Td), and one scotopic (-1.6 photopic Td or -1.2 scotopic Td) light
5 level. Note that these categorizations were based on rough estimation of retinal illuminance and used
6 as a reference. The amount of cone and rod activation was not directly measured.

7 8 3.2. Discomfort measurement

9 3.2.1. Effect of light level on discomfort

10 Fig. 2 shows discomfort ratings for different amplitude and phase spectra at each light level
11 while the RMS contrast of stimulus was fixed at 0.2. Figs. 2a and 2b are for square wave and random
12 phase spectra, respectively. The mean ratings across participants are plotted. Each participant rated the
13 discomfort twice for each amplitude and phase spectrum at each light level. All participants reported
14 that they could see the stimuli at all light levels. To confirm whether the ratings were generally
15 consistent within participants, the intraclass correlation coefficient (ICC) was calculated. Most ICC
16 values were above 0.75, indicating good reliability (Portney & Watkins, 2000). Thus, for the
17 subsequent analysis the mean of the two ratings by each participant was used.

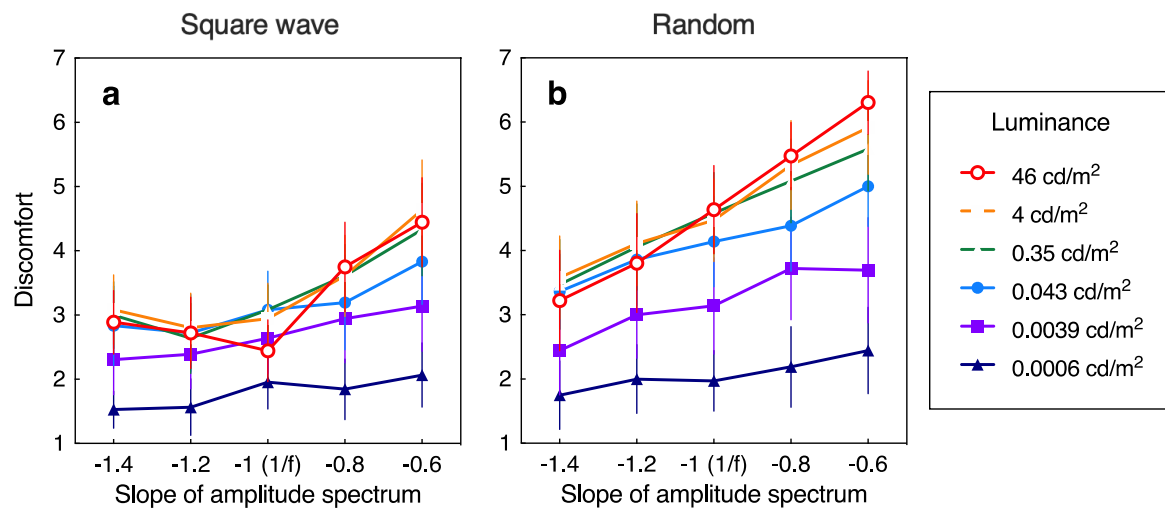


Fig. 2. Mean discomfort ratings across participants for square wave phase spectra (a) and for random phase spectra (b). The discomfort ratings are plotted as a function of the slope of the amplitude spectrum. Each curve represents results for one light level. The error bars represent 95% CI. The RMS contrast of the stimulus was fixed at 0.2.

Square wave phase spectrum: At the photopic light level (46.8 cd/m²), the plot of the discomfort settings showed an asymmetric V-shape (Fig. 2a), which replicated our previous findings (Yoshimoto et al., 2017). The stimulus that had a 1/*f* amplitude spectrum was rated most comfortable, whereas discomfort increased as the amplitude spectrum deviated in either direction from 1/*f*. Although both steeper (−1.4 and −1.2) and shallower (−0.8 and −0.6) slopes tended to increase the discomfort, the stimuli with shallower slopes appeared more uncomfortable than those with steeper slopes. Decreasing light levels from photopic to middle mesopic levels (46.8–0.043 cd/m²) removed the minimum in the rating at 1/*f*, without substantially affecting the overall ratings. In contrast, at the lower mesopic and scotopic levels (0.0039 and 0.0006 cd/m²), the discomfort ratings overall tended to drop, with the largest reductions for the shallower slopes so that the curve gradually became flat.

These results were statistically assessed as follows. A repeated-measures two-way ANOVA was conducted with the factors of amplitude slope and light level in Fig. 2a. The effect size was estimated by generalized eta squared (η^2_G) as recommended for repeated-measures ANOVAs, with 0.02, 0.13, and 0.26 indicating small, medium, and large effects (Bakeman, 2005; Olejnik & Algina, 2003). The main effect of amplitude slope and light level were significant ($F(4, 68) = 26.58, p < 0.0001, \eta^2_G = 0.15$ for the slope; $F(5, 85) = 16.99, p < 0.0001, \eta^2_G = 0.20$ for the light level). The interaction between amplitude slope and light level was also significant ($F(20, 340) = 3.61, p < 0.0001, \eta^2_G = 0.04$). The Tukey's post-hoc test showed significant differences among 1/*f* and shallower slopes ($qs \geq 4.34, ps < .05$) at the photopic and mesopic light levels higher than 0.0039 cd/m². No significant difference was found among the slopes ($qs \leq 3.51, ns$) at the scotopic level (0.0006 cd/m²). The Tukey's test also revealed that the discomfort ratings were significantly different among the photopic (46.8 cd/m²), low mesopic (0.0039 cd/m²), and scotopic (0.0006 cd/m²) levels ($qs \geq 5.96, ps < 0.001$). No significant difference was found among the light levels higher than 0.043 cd/m² ($qs \leq 3.80, ns$), except for 1/*f* between 46.8 versus 0.35 cd/m² and 46.8 versus 0.043 cd/m² ($qs \geq 4.16, ps < .05$).

Random phase spectrum: At the photopic light level (46.8 cd/m²), the discomfort pattern for random phase flicker (Fig. 2b) was different from that for square wave flicker (Fig. 2a), as shown in our previous study (Yoshimoto et al., 2017). At the photopic level, discomfort monotonically increased with shallower amplitude slope. The overall discomfort ratings were again generally similar from photopic to middle mesopic levels (46.8–0.043 cd/m²), but those for the stimuli with shallower slope (−0.8 and −0.6) were reduced at 0.043 cd/m². At light levels lower than 0.043 cd/m², the discomfort ratings also again decreased irrespective of the amplitude slope and the curves showed less dependence on the stimulus slope.

Again, statistical analyses supported these observations in Fig. 2b. The main effect of amplitude slope and light level were significant ($F(4, 68) = 73.28, p < 0.0001, \eta^2_G = 0.20$ for the slope; $F(5, 85) = 37.76, p < 0.0001, \eta^2_G = 0.35$ for the light level). The interaction between amplitude slope and light level was also significant ($F(20, 340) = 6.03, p < 0.0001, \eta^2_G = 0.05$). The Tukey's post-hoc test showed that the most discomfort ratings were invariant across the higher light levels of 46.8, 4.2, 0.35, and 0.043 cd/m^2 ($qs \leq 3.14, ns$). At the scotopic level (0.0006 cd/m^2), no significant difference was found among the slopes ($qs \leq 3.20, ns$), except between -1.4 and -0.6 ($q = 4.71, p < 0.01$).

3.2.2. Effect of contrast on discomfort

Fig. 3 shows discomfort ratings for different amplitude and phase spectra at each RMS contrast at the fixed photopic level (46.8 cd/m^2). The data of 0.2 (the highest RMS contrast examined) are replots of the data at 46.8 cd/m^2 in Fig. 2. All participants reported that they could see the stimuli at any RMS contrast.

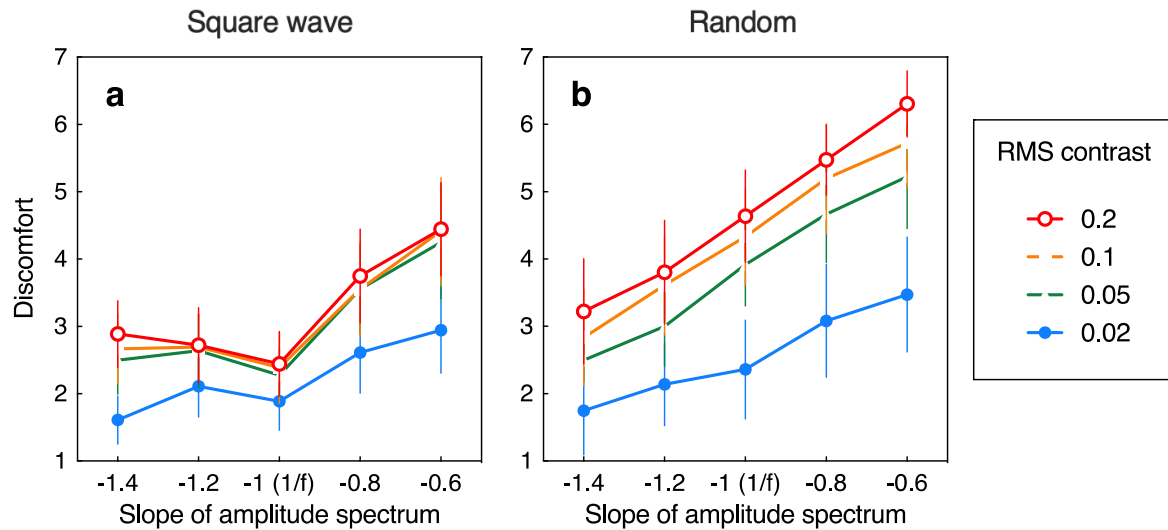


Fig. 3. Mean discomfort ratings across participants for square wave phase spectra (a) and for random phase spectra (b). The discomfort ratings are plotted as a function of the slope of amplitude spectrum. Each curve represents data at a different RMS contrast. The data for the light level of 46.8 cd/m² in Fig. 2 are replotted as the data for 0.2 RMS contrast. The error bars represent 95% CI. The light level was fixed at 46.8 cd/m².

Square wave phase spectrum: The discomfort ratings were robust to contrast reductions from 0.2 to 0.05 (Fig. 3a). The $1/f$ stimulus again tended to appear most comfortable, and the departure from $1/f$ toward shallower slopes increased the discomfort more than that toward steeper slopes. At the lowest contrast (0.02), the overall discomfort decreased, and the V-shape curve was not clearly apparent. In Fig. 3a, the main effect of amplitude slope and RMS contrast were significant ($F(4, 68) = 38.51, p < 0.0001, \eta^2_G = 0.26$ for the slope; $F(3, 51) = 12.68, p < 0.0001, \eta^2_G = 0.11$ for the RMS contrast). The interaction between amplitude slope and RMS contrast was also significant ($F(12, 204) = 2.16, p < 0.05, \eta^2_G = 0.02$). The Tukey's post-hoc test showed that the discomfort ratings were not different among the RMS contrasts of 0.2, 0.1, and 0.05 ($qs \leq 1.58, ns$), but different between 0.02 and the others ($qs \geq 6.22, ps < 0.0001$). At the lowest contrast, no significant difference was found among $-1.4, -1.2$, and $1/f$ slopes ($qs \leq 3.65, ns$), whereas the discomfort between -0.8 or -0.6 and the others were significantly different ($qs \geq 5.27, ps < 0.01$).

Random phase spectrum: The monotonic increase in discomfort with shallower amplitude slopes was observed irrespective of the RMS contrast (Fig. 3b). However, the overall discomfort gradually decreased with the reduction of contrast. The decrease in discomfort for lower contrasts was largest for the shallower slopes such as -0.6 . The main effect of amplitude slope and RMS contrast were significant ($F(4, 68) = 96.17, p < 0.0001, \eta^2_G = 0.33$ for the slope; $F(3, 51) = 26.44, p < 0.0001, \eta^2_G = 0.26$ for the RMS contrast) in Fig. 3b. The interaction between amplitude slope and RMS contrast was also significant ($F(12, 204) = 2.84, p < 0.01, \eta^2_G = 0.02$). The Tukey's post-hoc test showed that the discomfort ratings were significantly different among the RMS contrasts ($qs \geq 4.57, ps < 0.05$), except between 0.2 versus 0.1 ($q = 1.93, ns$) and 0.1 versus 0.05 ($q = 2.64, ns$).

Extending our early work (Yoshimoto et al., 2017), we examined the effects of amplitude and phase spectra on visual discomfort along with two further factors that might influence discomfort: the mean light level and the contrast of the flicker. We found in our previous studies (Yoshimoto et al., 2017, 2019) that the square wave stimulus shows a minimum in discomfort for the $1/f$ slope while the random phase spectra instead have a minimum at the steepest slopes. Here we show that this special status for the $1/f$ square wave condition was limited to photopic light levels. At the lower mesopic or scotopic levels, the effect of phase spectrum on the discomfort was diminished, with both phase spectra showing a monotonic change with the slope of the amplitude spectrum (Fig. 2). Thus, discomfort from flicker appeared invariant with phase at scotopic levels yet selective for phase at photopic levels. We also found that stimulus contrast affected the two phases in different ways, with

1 more monotonic effects on the random-phase flicker but weaker contrast dependence for the
2 square-wave pattern.

3 4 3.3. Contrast threshold measurement

5 Fig. 4 shows mean RMS contrast thresholds for detecting the flickering stimuli with
6 different amplitude and phase spectra for the participants. For both square wave and random phase
7 spectra, the contrast threshold steadily increased as the light level decreased. Although the contrast
8 threshold was slightly affected by the amplitude slope, the effect was much smaller than the effect of
9 light level.

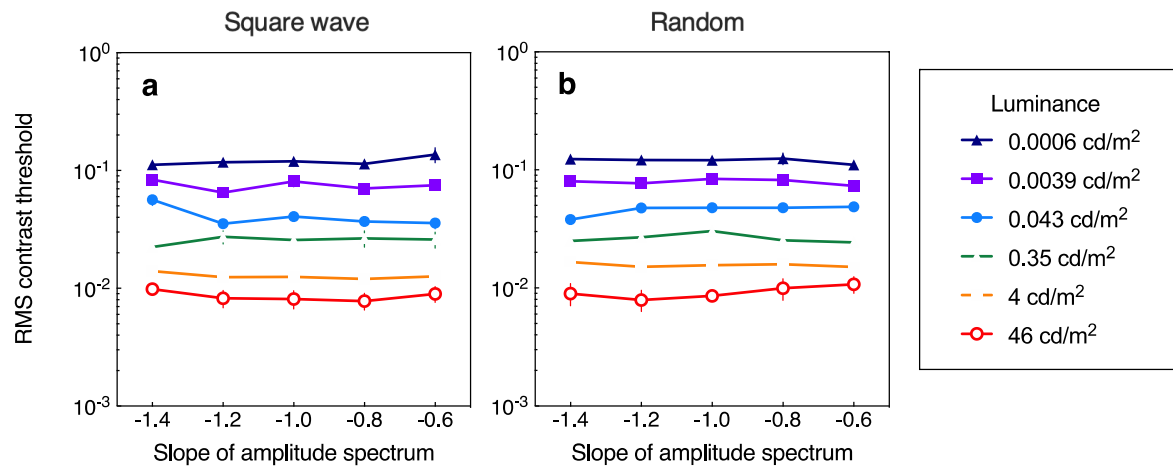


Fig. 4. Mean RMS contrast thresholds across participants for square wave (a) and for random phase spectra (b). The thresholds are plotted as the function of the slope of amplitude spectrum. Each curve represents data for the mean light level in luminance (cd/m^2). The error bars represent 95% CI.

To compare the effects of ambient light level (Fig. 2) and stimulus contrast (Fig. 3) on discomfort based on the visibility (or effective contrast) of the stimulus, we computed the multiple of RMS contrast threshold for the different conditions of light level and contrast by using the results shown in Fig. 4. The multiples were calculated for each participant and then averaged. The discomfort ratings shown in Figs. 2 and 3 are replotted as a function of mean multiple of RMS contrast threshold for the participants in Fig. 5. As shown in this figure, the stimuli were generally rated as most comfortable at the lowest multiple of RMS contrast threshold and tended to asymptote at higher multiples of threshold. These trends were observed for all conditions, but some differences were also seen between the conditions.

For the square wave phase spectra (Figs. 5a–5e), the discomfort ratings for the $1/f$ amplitude stimulus (Fig. 5c) tended to differ from the results for other slopes (Figs. 5a, 5b, 5d, and 5e). In Fig. 5c, the difference in discomfort between the light level condition (red solid line) and the contrast condition (blue dashed line) was prominent over the range from 5 to 15 times threshold, especially at 5 or 8 times the RMS contrast threshold (indicated by red arrows in Fig. 5c), which corresponded to the average luminance of 0.35 or 0.043 cd/m^2 . At these levels the $1/f$ square wave stimulus was rated as more uncomfortable than at the highest multiples of threshold (the rightmost data point in Fig. 5c) (Tukey's test: $qs \geq 4.16$, $ps < .05$). This arch-like discomfort curve was not observed in the contrast condition (the blue curve in Fig. 5c). A similar tendency seemed to occur in Fig. 5a, but was not statistically significant (Tukey's test: $qs \leq 3.80$, ns). At the other slopes for the square wave phase spectrum (Figs. 5b, 5d, and 5e), the discomfort ratings were similar for the light level and contrast conditions.

For the random phase spectrum, the discomfort for the shallower stimulus slopes (-0.8 or -0.6) was very similar between the light level and contrast conditions (Figs. 5i and 5j) whereas the effects diverged for the steeper slopes: discomfort for the light level condition was higher than for the equated contrast condition over the low to middle range of effective contrast (Figs. 5f and 5g). Finally, the $1/f$ random phase spectrum (Fig. 5h) lies in between these two tendencies. The finding that the discomfort ratings did not always match between the mean light level and contrast level conditions when they were normalized for multiples of detection threshold, suggests that stimulus visibility alone cannot predict the overall pattern of discomfort.

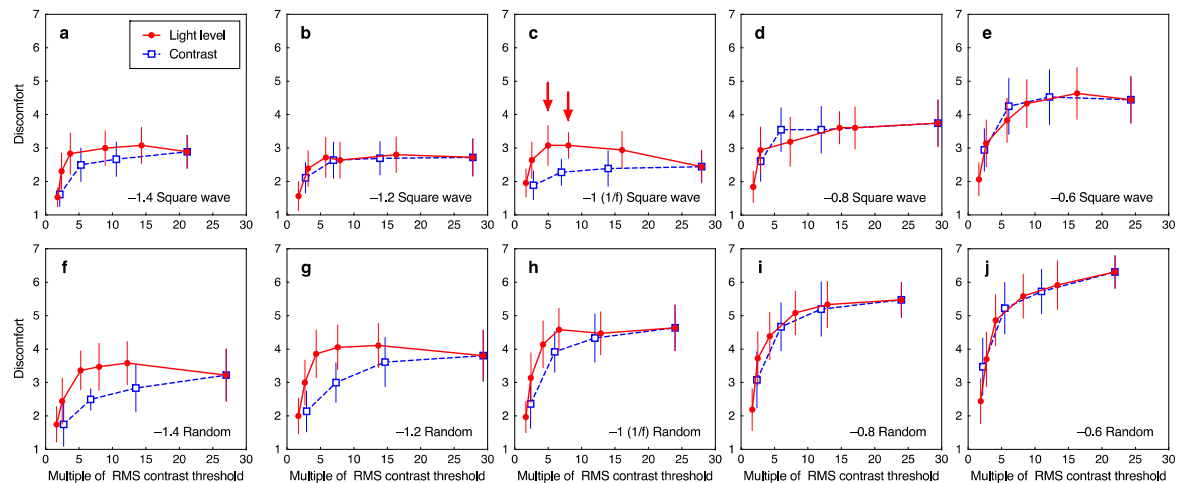


Fig. 5. Replotted data from Figs. 2 and 3. The discomfort rating was plotted as a function of mean multiple of RMS contrast threshold (Fig. 4) for the participants. Each curve represents data at the ambient light level (“Light level”) or RMS contrast of the stimulus (“Contrast”). The error bars represent 95% CI. Panels plot the discomfort ratings for square wave phase spectra with the amplitude slope of (a) -1.4 , (b) -1.2 , (c) -1 or $1/f$, (d) -0.8 , and (e) -0.6 ; or for random phase spectra with the corresponding slopes of (f) -1.4 , (g) -1.2 , (h) -1 or $1/f$, (i) -0.8 , and (j) -0.6 . The red arrows in (c) represent the multiples of contrast threshold at which the discomfort was higher than that at the highest multiple of contrast threshold.

3.4 Predictions from a model of the temporal contrast sensitivity function

Many aspects of visual sensitivity can be accounted for by models based on linear spatial or temporal filtering (De Valois & De Valois, 1988). We examined whether such linear filters could predict the discomfort ratings shown in Fig. 2. It is well established that the temporal response of the visual system depends on the mean light level: the shape of the temporal impulse response (TIR) function becomes biphasic to monophasic and the peak response is progressively delayed as the mean light level decreases (Hess, Sharpe, & Nordby, 1990; Ikeda & Shimozone, 1981; Kelly, 1971; Swanson et al., 1987). Generally, the TIR function (or its Fourier-transformed counterpart) is the first stage of computational models for the detection and discrimination of temporally-varying patterns (e.g., Adelson & Bergen, 1985; Watson & Ahumada, 1985). We asked whether the characteristic changes in the TIR function with light level could therefore predict the changes in the discomfort ratings. Specifically, we asked whether stronger responses based on the TIR function predict greater discomfort.

To assess this, we implemented the temporal filtering by convolving the TIR functions described in Fig. 10 of Kelly (1971) with the flicker stimulus shown in Fig. 1. The length of TIR function and flicker were set to 0.2 s and 2.0 s, respectively. In Kelly (1971), the mean light level varied from 1.57 to 1670 td, which partially overlaps with the condition in this study, which varied from 0.026 td (0.0006 cd/m²) to 819 td (46 cd/m²). Thus, we set the parameters of the TIR function such that the strength of the negative component or the relative responses between the different light levels was the same as that of Kelly (1971). Fig. 6 shows the time-averaged responses after the temporal filtering of the input flicker. The schematic description of the TIR functions used is shown in the inset of Fig 6. At high light levels, the TIR function is biphasic while it becomes monophasic at low light levels. However, no effect of the slope of amplitude spectrum was observed, while the effect of mean light level was conspicuous. Fig. 6 captures the tendency of the contrast threshold for the flicker to vary with light level as shown in Fig. 4, yet fails to describe the pattern of discomfort ratings in Fig. 2, where the effect of amplitude slope was conspicuous while the effect of mean light level was small, especially between the photopic and high mesopic light levels. These results thus indicate that while changes in the linear filtering with light level could predict the detection threshold of flicker, these changes do not predict the effects of light level and amplitude slope on discomfort ratings.

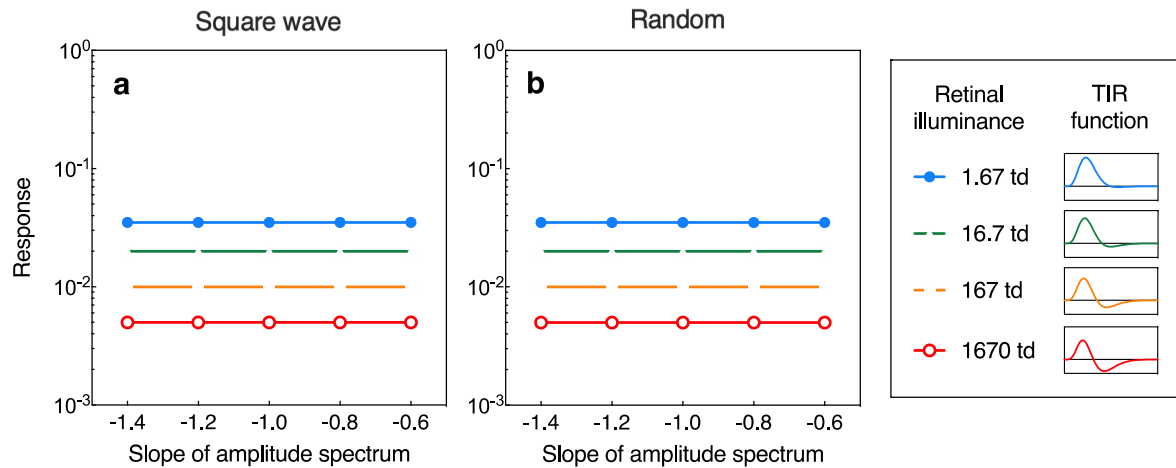


Fig. 6. Time averaged responses after convolving the TIR functions with the input flicker for the square wave phase spectrum (a) and for random phase spectra (b) are plotted as a function of the slope of the amplitude spectrum. Each curve represents predicted responses for a given mean light level in trolands (td). Temporal response functions are from Fig. 10 of Kelly (1971). Schematic depictions of the shape of the TIR function at the corresponding mean light level is shown in the right panel.

3.5 Perceived naturalness of the flicker

In our previous study (Yoshimoto et al., 2017), we showed that the discomfort ratings were consistent with ratings of how natural the stimuli appeared under photopic vision. Fig. 7 shows the perceived naturalness (or unnaturalness) of the flicker for various contrasts at different mean luminance levels. In Fig. 7a (square wave phase transition), the flicker with $1/f$ amplitude spectrum was rated as most natural (i.e., lowest unnaturalness rating value) while this judgment was weaker for both steeper and shallower slopes. As the mean luminance decreased, the slope of the amplitude spectrum that induced the strongest impression of naturalness became steeper. The main effect of amplitude slope and light level were significant ($F(4, 60) = 26.10, p < 0.0001, \eta^2_G = 0.13$ for the slope; $F(5, 75) = 7.782, p < 0.0001, \eta^2_G = 0.10$ for the light level). The interaction between amplitude slope and light level was also significant ($F(20, 300) = 2.14, p < 0.01, \eta^2_G = 0.03$). For random phase spectra, the perceived unnaturalness increased as the slope of amplitude spectrum became shallower, irrespective of the mean luminance level (Fig. 7b). The main effect of amplitude slope and light level were significant ($F(4, 60) = 125.1, p < 0.0001, \eta^2_G = 0.35$ for the slope; $F(5, 75) = 23.63, p < 0.0001, \eta^2_G = 0.26$ for the light level). The interaction between amplitude slope and light level was also significant ($F(20, 300) = 7.409, p < 0.0001, \eta^2_G = 0.08$).

When we instead varied contrast, the unnaturalness impression for the square wave phase spectrum again tended to be lowest for the $1/f$ amplitude spectrum irrespective of the contrast. The main effect of amplitude slope and RMS contrast were significant ($F(4, 60) = 23.53, p < 0.0001, \eta^2_G = 0.20$ for the slope; $F(3, 45) = 3.117, p < 0.05, \eta^2_G = 0.07$ for the RMS contrast). The interaction between amplitude slope and RMS contrast was also significant ($F(12, 180) = 2.575, p < 0.01, \eta^2_G = 0.02$). In comparison, unnaturalness again increased as the slope of the amplitude spectrum became shallower for the random phase transitions (Fig. 7d). The main effect of amplitude slope and RMS contrast were significant ($F(4, 60) = 131.4, p < 0.0001, \eta^2_G = 0.40$ for the slope; $F(3, 45) = 5.944, p < 0.01, \eta^2_G = 0.07$ for the RMS contrast). The interaction between amplitude slope and RMS contrast was also significant ($F(12, 180) = 2.322, p < 0.01, \eta^2_G = 0.02$). Note that this pattern for unnaturalness ratings (Fig. 7) is very similar to the pattern we observed for the discomfort ratings (Figs. 2 and 3), even though a different set of participants completed the two tasks. The Pearson correlation coefficients between the discomfort and the unnaturalness ratings for each phase spectrum (square wave and random) at each experimental condition (light level and stimulus contrast) were consistently high ($rs > 0.92, p < 0.0001$). The close similarities between the discomfort and unnaturalness ratings

- 1 thus suggest that discomfort for the flicker is closely related to how unnatural the flicker appears,
- 2 irrespective of the mean light level and the contrast.

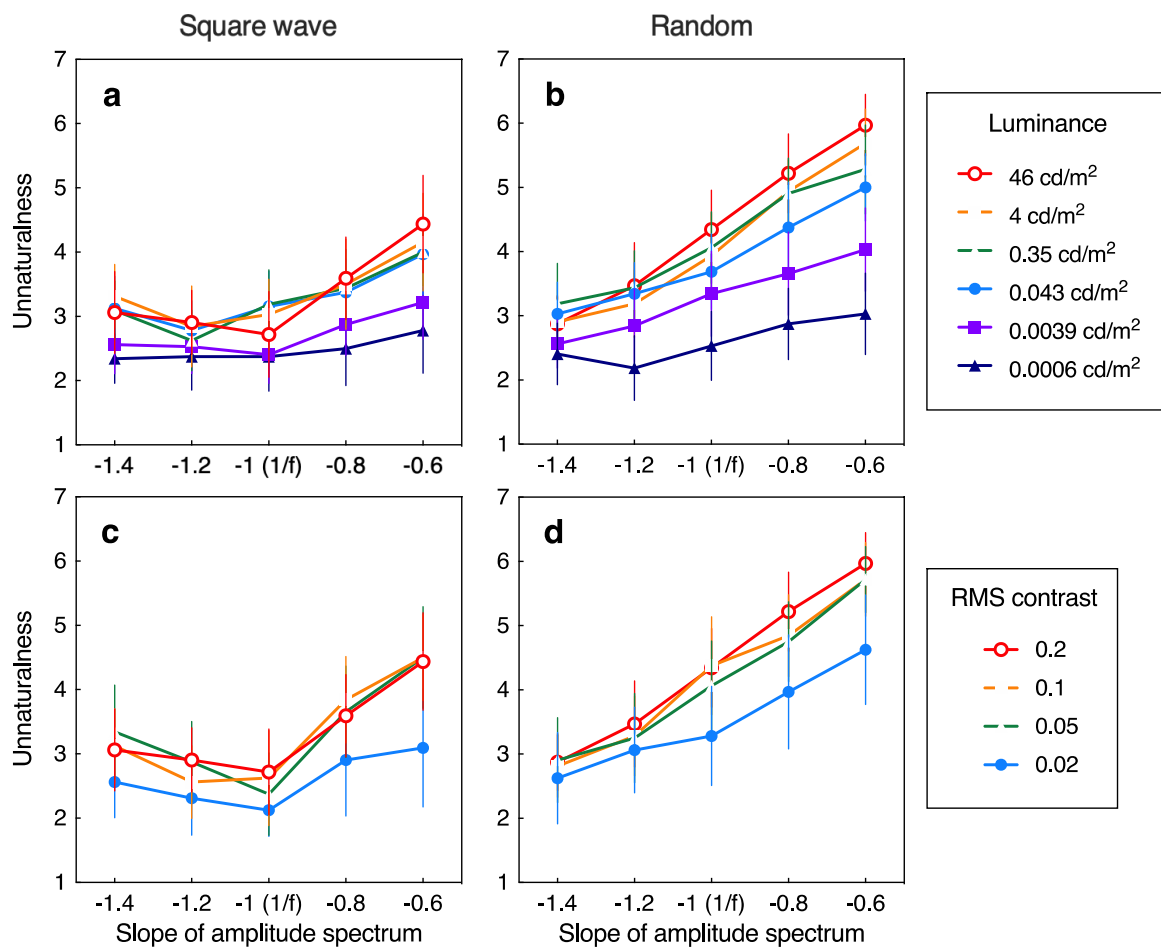


Fig. 7. Mean unnaturalness ratings across participants for square wave phase spectra (a and c) and for random phase spectrum (b and d). Note lower ratings correspond to stimuli perceived as more natural (analogous to lower ratings corresponding to more comfortable). In a and b, each curve represents results for different slopes at fixed light level. The RMS contrast of stimulus was fixed at 0.2. In c and d, each curve reflects settings for different slopes at a fixed RMS contrast. The mean luminance level was fixed at 46.8 cd/m^2 . The error bars represent 95% CI.

4. General Discussion

Visual discomfort is an important visual attribute that observers can reliably judge and that varies in systematic ways with the physical properties of the stimulus (Fernandez & Wilkins, 2008; Juricevic et al., 2010; Yoshimoto et al., 2017). Here we examined how ratings of discomfort for temporally varying patterns depend on light level and contrast, stimulus properties that strongly impact the strength and form of the visual response. Changes in both light level and contrast affected the discomfort from flickering patterns in ways that depended on both the amplitude spectrum and phase spectrum of the flicker. However, these effects could not be accounted for by the overall visibility of the pattern or by how the linear temporal response function of the visual system changes with light level. This temporal filtering could predict the detection thresholds for the different patterns across light level, but failed to predict the discomfort ratings (Figs. 4 and 6). Alternatively, judgments of how natural the different types of flicker appeared did correspond closely to how comfortable they were perceived to be (Fig. 7). These results suggest that perceived discomfort from flicker depends on a process specifically sensitive to how the temporal structure of the stimulus deviates from (perceived) temporal statistics of natural visual stimuli.

Regardless of the underlying mechanisms, our results show that the flicker patterns that appear uncomfortable shift at low mesopic and scotopic light levels. Peterson, Ohzawa, and Freeman, (2001) showed that the perceived temporal frequency of flickering patterns was higher than the actual frequency under low luminance conditions, although the response of presumed detectors tuned to high temporal frequencies would be reduced due to the known shift in the frequency domain from band-pass to low-pass temporal characteristics. They argued that the tuning of a subset of cortical cells, which leads to a perception of high temporal frequency, would shift from high to low frequencies with the decrease in luminance level, resulting in the perceived overestimation of frequency (a so-called labelled detector hypothesis). This shift is consistent with the observation that the amplitude slope of the stimulus that was rated as most comfortable shifted to steeper slopes as the light level decreased (Fig. 2a).

In Fig. 5, the discrepancy between the light-level condition and the contrast condition is apparent only in Figs. 5c, 5f and 5g. As found in this study, the discomfort decrement for the flicker with the $1/f$ amplitude spectrum is varies less with the luminance contrast of the stimulus than with the light level (Figs. 2a and 3a). This characteristic is reflected in Fig. 5c, in which the two functions for light level and contrast do not overlap. For the data of Figs. 5f and 5g, we speculate that the faster

1 growth of the discomfort ratings under the light-level condition than under the luminance-contrast
2 condition might be explained by the labelled-detector hypothesis described above. When the slope of
3 amplitude spectrum is steeper as in Figs. 5f or 5g, lower temporal frequency components of the flicker
4 are overestimated to induce stronger discomfort ratings only in the low light level condition. This kind
5 of overestimation does not occur at low-luminance contrast, thus the two functions in Figs. 5f or 5g do
6 not overlap. The overestimation under low-light levels seems not to affect the discomfort ratings when
7 the phase spectrum was fixed (Figs. 5a or 5b), since the discomfort rating is generally stronger in the
8 random phase condition than in the fixed (square wave) phase condition when the slope of the
9 amplitude spectrum was shallower (thus the higher temporal frequency components are stronger).

10 Our results also further demonstrate the discomfort from flicker is not simply related to the
11 overall contrast or amplitude spectrum of the stimulus but also depends on the specific “profile” of the
12 stimulus. Square edges in space or time might appear more comfortable because they are more natural
13 stimulus transitions and blurred or over-sharpened edges might elicit greater discomfort because they
14 deviate from this expected structure. This factor may be relatively less influenced by overall contrast
15 since the change in contrast does not alter the profile, and is consistent with the higher degree of
16 contrast invariance we found for the square waves (Fig. 3a). Alternatively, the random phase would
17 not be subject to this influence as shown in Fig. 3b because the profile is already unnatural or
18 unpredictable. Thus by this conjecture, the square wave and random modulations may give rise to and
19 be dominated by distinct sources of discomfort (degree of unnaturalness and level of stimulation,
20 respectively) which in turn might be differentially modulated by varying the luminance level or
21 contrast of the stimuli.

22 Natural images are assumed to be efficiently coded by the visual system (Atick, 1990;
23 Atick & Redlich, 1992; Barlow, 1981; Field, 1987; Lennie, 2003; Olshausen & Field, 2004; Párraga,
24 Troscianko, & Tolhurst, 2000; Srinivasan, Laughlin, & Dubs, 1982). Fernandez and Wilkins (2008)
25 and Juricevic et al. (2010) concluded that images having a structure different from $1/f$ would cause less
26 efficient neural processing and therefore greater metabolic demand, which might produce discomfort.
27 This assumption is supported not only by computational modeling studies showing that uncomfortable
28 images produce non-sparse responses in primary visual cortex or V1 (Hibbard & O’Hare, 2015;
29 Penacchio, Otazu, Wilkins, & Harris, 2015), but also by a near-infrared spectroscopy (NIRS) study
30 showing that the images with unnatural statistical properties, which are often uncomfortable to look at,
31 elicit a larger hemodynamic response than for images with more natural properties, which are often
32 comfortable to look at (Le et al., 2017). However, some neuroimaging studies have shown that images

with $1/f$ spectra can instead cause stronger cortical responses, presumably due to a more uniform response distribution over different spatial scales (Isherwood, Schira, & Spehar, 2017; Olman, Ugurbil, Schrater, & Kersten, 2004).

The different sources described above (degree of unnaturalness and level of stimulation, respectively) might reconcile the discomfort effects with the findings that $1/f$ spectra produce the strongest BOLD responses (Olman et al., 2004; Isherwood et al., 2017, 2018) thus suggesting greater stimulation. By this account, the “unnatural” source of discomfort would not be captured by the BOLD amplitude because it is distinct from the level of stimulation.

A diverse set of factors may therefore underlie different sources of discomfort. Future studies might try to better disentangle these potential sources by exploring whether more nuanced responses can be developed that can potentially distinguish the different “ways” that a stimulus might be visually uncomfortable.

5. Conclusions

There are large qualitative changes in discomfort from flicker with mean light level and contrast. We show that these changes cannot be accounted for by the temporal contrast response function of early visual processing but are closely related to the perceived naturalness of the stimuli. Discomfort from flicker may therefore reflect involvement of a process that is sensitive to the specific profile of the temporal structure of the stimulus.

Acknowledgment

This work was supported by JSPS KAKENHI Grant Number 17K13966 (SY); 16K04432 (SY and TT); EY010834 (MW); and EY023268 (FJ).

References

- Adelson, E. H., & Bergen, J. R. (1985). Spatiotemporal energy models for the perception of motion. *Journal of the Optical Society of America A*, 2(2), 284–299.
<https://doi.org/10.1364/josaa.2.000284>

- 1 Atick, J. J. (1990). Could information-theory provide an ecological theory of sensory processing?
2 *Network*, 22(1–4), 4–44. <https://doi.org/http://dx.doi.org/10.3109/0954898X.2011.638888>.
- 3 Atick, J. J., & Redlich, A. N. (1992). What does the retina know about natural scenes? *Neural*
4 *Computation*, 4, 196–210. <https://doi.org/http://dx.doi.org/10.1162/neco.1992.4.2.196>.
- 5 Bakeman, R. (2005). Recommended effect size statistics for repeated measures designs. *Behavior*
6 *Research Methods*, 37(3), 379–384. <https://doi.org/10.3758/BF03192707>
- 7 Barlow, H. B. (1981). The Ferrier Lecture, 1980. Critical limiting factors in the design of the eye and
8 visual cortex. *Proceedings of the Royal Society of London, Section B*, 212(1186), 1–34.
9 <https://doi.org/http://dx.doi.org/10.1098/rspb.1981.0022>.
- 10 Billino, J., Bremmer, F., & Gegenfurtner, K. R. (2008). Motion processing at low light levels:
11 Differential effects on the perception of specific motion types. *Journal of Vision*, 8(3), 1–10.
12 <https://doi.org/10.1167/8.3.14>
- 13 Billock, V. A., de Guzman, G. C., & Scott Kelso, J. A. (2001). Fractal time and 1/f spectra in dynamic
14 images and human vision. *Physica D: Nonlinear Phenomena*, 148(1–2), 136–146.
15 [https://doi.org/10.1016/S0167-2789\(00\)00174-3](https://doi.org/10.1016/S0167-2789(00)00174-3)
- 16 Binnie, C. D., Findlay, J., & Wilkins, A. J. (1985). Clinical Section. *Electroencephalography and*
17 *Clinical Neurophysiology*, 61(1), 1–6. <https://doi.org/10.1177/003591575204500708>
- 18 Brainard, D. H. (1997). The Psychophysics Toolbox. *Spatial Vision*, 10(4), 433–436.
19 <https://doi.org/10.1163/156856897X00357>
- 20 Burr, D. C., & Morrone, M. C. (1993). Impulse-response functions for chromatic and achromatic
21 stimuli. *Journal of the Optical Society of America A*, 10(8), 1706–1713.
22 <https://doi.org/10.1364/JOSAA.10.001706>.
- 23 Challinor, K. L., & Mather, G. (2010). A motion-energy model predicts the direction discrimination
24 and MAE duration of two-stroke apparent motion at high and low retinal illuminance. *Vision*
25 *Research*, 50(12), 1109–1116. <https://doi.org/10.1016/j.visres.2010.04.002>
- 26 Cole, G. G., & Wilkins, A. J. (2013). Fear of holes. *Psychological Science*, 24(10), 1980–1985.
27 <https://doi.org/10.1177/0956797613484937>
- 28 Dawson, M., & Lollo, V. Di. (1990). Effects of adapting luminance and stimulus contrast on the
29 temporal and spatial limits of short-range motion. *Vision Research*, 30(3), 415–429.
30 [https://doi.org/10.1016/0042-6989\(90\)90083-W](https://doi.org/10.1016/0042-6989(90)90083-W)
- 31 De Valois, R. L., & De Valois, K. K. (1988). *Spatial vision*. New York: Oxford University Press.

- 1 Derrington, A. M., & Goddard, P. A. (1989). Failure of motion discrimination at high contrasts:
2 Evidence for saturation. *Vision Research*, 29(12), 1767–1776.
3 [https://doi.org/10.1016/0042-6989\(89\)90159-4](https://doi.org/10.1016/0042-6989(89)90159-4)
- 4 Dong, D. W., & Atick, J. J. (1995). Statistics of natural time-varying images. *Network: Computation*
5 *in Neural Systems*, 6(3), 345–358. https://doi.org/10.1088/0954-898X_6_3_003
- 6 Edwards, M., Badcock, D. R., & Nishida, S. (1996). Contrast sensitivity of the motion system. *Vision*
7 *Research*, 36(16), 2411–2421. [https://doi.org/10.1016/0042-6989\(95\)00321-5](https://doi.org/10.1016/0042-6989(95)00321-5)
- 8 Fernandez, D., & Wilkins, A. J. (2008). Uncomfortable images in art and nature. *Perception*, 37(7),
9 1098–1113. <https://doi.org/10.1068/p5814>
- 10 Field, D. J. (1987). Relations between the statistics of natural images and the response properties of
11 cortical cells. *Journal of the Optical Society of America A*, 4(12), 2379–2394.
12 <https://doi.org/10.1364/JOSAA.4.002379>
- 13 Fisher, R. S., Harding, G., Erba, G., Barkley, G. L., & Wilkins, A. (2005). Photic- and pattern-induced
14 seizures: A review for the epilepsy foundation of america working group. *Epilepsia*, 46(9),
15 1426–1441. <https://doi.org/10.1111/j.1528-1167.2005.31405.x>
- 16 Gegenfurtner, K. R., Mayser, H. M., & Sharpe, L. T. (2000). Motion perception at scotopic light levels.
17 *Journal of the Optical Society of America A*, 17(9), 1505–1515.
18 <https://doi.org/10.1364/JOSAA.17.001505>
- 19 Grossman, E. D., & Blake, R. (1999). Perception of coherent motion, biological motion and
20 form-from-motion under dim-light conditions. *Vision Research*, 39(22), 3721–3727.
21 [https://doi.org/10.1016/S0042-6989\(99\)00084-X](https://doi.org/10.1016/S0042-6989(99)00084-X)
- 22 Hammett, S. T., Champion, R. A., Thompson, P. G., & Morland, A. B. (2007). Perceptual distortions
23 of speed at low luminance: Evidence inconsistent with a Bayesian account of speed encoding.
24 *Vision Research*, 47(4), 564–568. <https://doi.org/10.1016/j.visres.2006.08.013>
- 25 Harding, G. F. A., & Harding, P. F. (2005). Televised material and photosensitive epilepsy. *Epilepsia*,
26 40(s4), 65–69. <https://doi.org/10.1111/j.1528-1157.1999.tb00909.x>
- 27 Harding, G. F. A., & Jeavons, P. M. (1994). *Photosensitive epilepsy*. Cambridge: Cambridge
28 University Press.
- 29 Hess, R. F. (1990). The Ed ridge-Green Lecture Vision at low light levels: Role of spatial, temporal
30 and contrast filters. *Ophthalmic and Physiological Optics*, 10(4), 351–359.
31 <https://doi.org/10.1111/j.1475-1313.1990.tb00881.x>

- 1 Hess, R. F., Sharpe, L. T., & Nordby, K. (1990). *Night vision: Basic, clinical and applied aspects*.
2 Cambridge, UK: Cambridge University Press.
- 3 Hess, R. F., & Zaharia, A. G. (2010). Global motion processing: Invariance with mean luminance.
4 *Journal of Vision*, 10(13), 1–10. <https://doi.org/10.1167/10.13.22>
- 5 Hess, Robert F., Waugh, S. J., & Nordby, K. (1996). Rod temporal channels. *Vision Research*, 36(4),
6 613–619. [https://doi.org/10.1016/0042-6989\(96\)89254-6](https://doi.org/10.1016/0042-6989(96)89254-6)
- 7 Hibbard, P. B., & O’Hare, L. (2015). Uncomfortable images produce non-sparse responses in a model
8 of primary visual cortex. *Royal Society Open Science*, 2(2), 1–8.
9 <https://doi.org/10.1098/rsos.140535>
- 10 Hood, D. C., & Finkelstein, M. A. (1986). Visual sensitivity. In K. Boff, L. Kaufman, & J. P. Thomas
11 (Eds.), *Handbook of perception and human performance* (pp. 1–66). New York: Wiley.
- 12 Ikeda, M., & Shimozone, H. (1981). Mesopic luminous-efficiency functions. *Journal of the Optical*
13 *Society of America*, 71(3), 280–284. Retrieved from
14 <http://www.ncbi.nlm.nih.gov/pubmed/7218072>
- 15 Isherwood, Z., Clifford, C., Schira, M., & Spehar, B. (2018). BOLD tuning of human visual cortex to
16 natural statistical properties in space and time. *Journal of Vision*, 18(10), 1245 (VSS
17 Supplement). <https://doi.org/10.1167/18.10.1245>
- 18 Isherwood, Z. J., Schira, M. M., & Spehar, B. (2017). The tuning of human visual cortex to variations
19 in the $1/f\alpha$ amplitude spectra and fractal properties of synthetic noise images. *NeuroImage*, 146,
20 642–657. <https://doi.org/10.1016/j.neuroimage.2016.10.013>
- 21 Judd, D. B. (1951). *Report of U.S. secretariat committee on colorimetry and artificial daylight*. In
22 *Proceedings of the twelfth session of the CIE, Stockholm*. Paris.
- 23 Juricevic, I., Land, L., Wilkins, A., & Webster, M. A. (2010). Visual discomfort and natural image
24 statistics. *Perception*, 39(7), 884–899. <https://doi.org/10.1068/p6656>
- 25 Kelly, D. H. (1961). Visual responses to time-dependent stimuli. I. Amplitude Sensitivity
26 Measurements. *Journal of the Optical Society of America*, 51(4), 422–429.
27 <https://doi.org/10.1364/JOSA.51.000422>
- 28 Kelly, D. H. (1971). Theory of flicker and transient responses. II. Counterphase gratings. *Journal of*
29 *the Optical Society of America*, 61(5), 632–640. <https://doi.org/10.1364/JOSA.61.000632>
- 30 Lankheet, M. J. M., van Doorn, A. J., Bouman, M. A., & van de Grind, W. A. (2000). Motion
31 coherence detection as a function of luminance level in human central vision. *Vision Research*,
32 40(26), 3599–3611. [https://doi.org/10.1016/S0042-6989\(00\)00187-5](https://doi.org/10.1016/S0042-6989(00)00187-5)

- 1 Lankheet, M. J. M., van Doorn, A. J., & van de Grind, W. A. (2002). Spatio-temporal tuning of
2 motion coherence detection at different luminance levels. *Vision Research*, 42(1), 65–73.
3 [https://doi.org/10.1016/S0042-6989\(01\)00265-6](https://doi.org/10.1016/S0042-6989(01)00265-6)
- 4 Le, A. T. D., Payne, J., Clarke, C., Kelly, M. A., Prudenziati, F., Armsby, E., ... Wilkins, A. J. (2017).
5 Discomfort from urban scenes: Metabolic consequences. *Landscape and Urban Planning*, 160,
6 61–68. <https://doi.org/10.1016/j.landurbplan.2016.12.003>
- 7 Lennie, P. (2003). The Cost of Cortical Computation. *Current Biology*, 13(6), 493–497.
8 [https://doi.org/10.1016/S0960-9822\(03\)00135-0](https://doi.org/10.1016/S0960-9822(03)00135-0)
- 9 Lin, M.-W., Hsieh, P.-H., Chang, E. C., & Chen, Y.-C. (2014). Flicker-glare and visual-comfort
10 assessments of light emitting diode billboards. *Applied Optics*, 53(22), E61–E68.
11 <https://doi.org/10.1364/AO.53.000E61>
- 12 Macleod, D. I. A. (1972). Rods cancel cones in flicker. *Nature*, 235(5334), 173–174.
13 <https://doi.org/10.1038/235173a0>
- 14 Marcus, D. A., & Soso, M. J. (1989). Migraine and stripe-induced visual discomfort. *Archives of*
15 *Neurology*, 46(10), 1129–1132. <https://doi.org/10.1001/archneur.1989.00520460125024>
- 16 Mather, G., & Challinor, K. L. (2009). Psychophysical properties of two-stroke apparent motion.
17 *Journal of Vision*, 9(1), 1–6. <https://doi.org/10.1167/9.1.28>
- 18 Nakayama, K., & Silverman, G. H. (1985). Detection and discrimination of sinusoidal grating
19 displacements. *Journal of the Optical Society of America A*, 2(2), 267.
20 <https://doi.org/10.1364/josaa.2.000267>
- 21 Nishida, S., Ashida, H., & Sato, T. (1997). Contrast dependencies of two types of motion aftereffect.
22 *Vision Research*, 37(5), 553–563. [https://doi.org/10.1016/S0042-6989\(96\)00181-2](https://doi.org/10.1016/S0042-6989(96)00181-2)
- 23 O'Hare, L., & Hibbard, P. B. (2013). Visual discomfort and blur. *Journal of Vision*, 13(5), 1–12.
24 <https://doi.org/10.1167/13.5.7>
- 25 O'Hare, Louise, & Hibbard, P. B. (2011). Spatial frequency and visual discomfort. *Vision Research*,
26 51(15), 1767–1777. <https://doi.org/10.1016/j.visres.2011.06.002>
- 27 Ohtani, Y., Ido, K., & Ejima, Y. (1995). Effects of luminance contrast and phase difference on motion
28 assimilation for sinusoidal gratings. *Vision Research*, 35(16), 2277–2286.
29 [https://doi.org/10.1016/0042-6989\(94\)00315-D](https://doi.org/10.1016/0042-6989(94)00315-D)
- 30 Olejnik, S., & Algina, J. (2003). Generalized eta and omega squared statistics: Measures of effect size
31 for some common research designs. *Psychological Methods*, 8(4), 434–447.
32 <https://doi.org/10.1037/1082-989X.8.4.434>

- 1 Olman, C. A., Ugurbil, K., Schrater, P., & Kersten, D. (2004). BOLD fMRI and psychophysical
2 measurements of contrast response to broadband images. *Vision Research*, 44(7), 669–683.
3 <https://doi.org/10.1016/j.visres.2003.10.022>
- 4 Olshausen, B. A., & Field, D. J. (2004). Sparse coding of sensory inputs. *Current Opinion in*
5 *Neurobiology*, 14(4), 481–487. <https://doi.org/10.1016/j.conb.2004.07.007>
- 6 Pantle, A., & Sekuler, R. (1969). Contrast response of human visual mechanisms sensitive to
7 orientation and direction of motion. *Vision Research*, 9(3), 397–406.
8 [https://doi.org/10.1016/0042-6989\(69\)90087-X](https://doi.org/10.1016/0042-6989(69)90087-X)
- 9 Párraga, C. A., Troscianko, T., & Tolhurst, D. J. (2000). The human visual system is optimised for
10 processing the spatial information in natural visual images. *Current Biology*, 10(1), 35–38.
11 [https://doi.org/10.1016/S0960-9822\(99\)00262-6](https://doi.org/10.1016/S0960-9822(99)00262-6)
- 12 Pelli, D. G. (1997). The VideoToolbox software for visual psychophysics: transforming numbers into
13 movies. *Spatial Vision*, 10(4), 437–442. Retrieved from
14 <http://www.ncbi.nlm.nih.gov/pubmed/9176953>
- 15 Penacchio, O., Otazu, X., Wilkins, A. J., & Harris, J. (2015). Uncomfortable images prevent lateral
16 interactions in the cortex from providing a sparse code. *Perception*, 44, 67–68 (ECVP
17 Supplement).
- 18 Peterson, M., Ohzawa, I., & Freeman, R. (2001). Neural and perceptual adjustments to dim light.
19 *Visual Neuroscience*, 18(2), S0952523801182052. <https://doi.org/10.1017/S0952523801182052>
- 20 Plainis, S., & Murray, I. J. (2000). Neurophysiological interpretation of human visual reaction times:
21 Effect of contrast, spatial frequency and luminance. *Neuropsychologia*, 38(12), 1555–1564.
22 [https://doi.org/10.1016/S0028-3932\(00\)00100-7](https://doi.org/10.1016/S0028-3932(00)00100-7)
- 23 Pritchard, S. J., & Hammett, S. T. (2012). The effect of luminance on simulated driving speed. *Vision*
24 *Research*, 52(1), 54–60. <https://doi.org/10.1016/j.visres.2011.10.014>
- 25 Raymond, J. E., & Darcangelo, S. M. (1990). The effect of local luminance contrast on induced
26 motion. *Vision Research*, 30(5), 751–756. [https://doi.org/10.1016/0042-6989\(90\)90100-Y](https://doi.org/10.1016/0042-6989(90)90100-Y)
- 27 Sheliga, B. M., Chen, K. J., FitzGibbon, E. J., & Miles, F. A. (2006). The initial ocular following
28 responses elicited by apparent-motion stimuli: Reversal by inter-stimulus intervals. *Vision*
29 *Research*, 46(6–7), 979–992. <https://doi.org/10.1016/j.visres.2005.09.001>
- 30 Snowden, R. J., Hess, R. F., & Waugh, S. J. (1995). The processing of temporal modulation at
31 different levels of retinal illuminance. *Vision Research*, 35(6), 775–789.
32 [https://doi.org/10.1016/0042-6989\(94\)00158-I](https://doi.org/10.1016/0042-6989(94)00158-I)

- 1 Srinivasan, M. V., Laughlin, S. B., & Dubs, A. (1982). Predictive coding: a fresh view of inhibition in
2 the retina. *Proceedings of the Royal Society of London. Series B. Biological Sciences*, 216(1205),
3 427–459. <https://doi.org/10.1098/rspb.1982.0085>
- 4 Stockman, A., & Sharpe, L. T. (2006). Into the twilight zone: The complexities of mesopic vision and
5 luminous efficiency. *Ophthalmic and Physiological Optics*, 26(3), 225–239.
6 <https://doi.org/10.1111/j.1475-1313.2006.00325.x>
- 7 Swanson, W. H., Ueno, T., Smith, V. C., & Pokorny, J. (1987). Temporal modulation sensitivity and
8 pulse-detection thresholds for chromatic and luminance perturbations. *Journal of the Optical*
9 *Society of America. A, Optics and Image Science*, 4(10), 1992–2005. Retrieved from
10 <http://www.ncbi.nlm.nih.gov/pubmed/3430210>
- 11 Takeuchi, T., & De Valois, K. K. (1997). Motion-reversal reveals two motion mechanisms functioning
12 in scotopic vision. *Vision Research*, 37(6), 745–755.
13 [https://doi.org/10.1016/S0042-6989\(96\)00207-6](https://doi.org/10.1016/S0042-6989(96)00207-6)
- 14 Takeuchi, T., & De Valois, K. K. (2009). Visual motion mechanisms under low retinal illuminance
15 revealed by motion reversal. *Vision Research*, 49(8), 801–809.
16 <https://doi.org/10.1016/j.visres.2009.02.011>
- 17 van de Grind, W. A., Koenderink, J. J., & van Doorn, A. J. (2000). Motion detection from photopic to
18 low scotopic luminance levels. *Vision Research*, 40(2), 187–199.
19 [https://doi.org/10.1016/S0042-6989\(99\)00167-4](https://doi.org/10.1016/S0042-6989(99)00167-4)
- 20 van Hateren, J. H., & van der Schaaf, A. (1996). Temporal properties of natural scenes. *Proceedings of*
21 *SPIE*, 2657, 139–143. <https://doi.org/10.1117/12.238709>
- 22 Vaziri-Pashkam, M., & Cavanagh, P. (2008). Apparent speed increases at low luminance. *Journal of*
23 *Vision*, 8(2008), 1–12. <https://doi.org/10.1167/8.16.9.Introduction>
- 24 Vos, J. J. (1978). Colorimetric and photometric properties of a 2° fundamental observer. *Color*
25 *Research & Application*, 3(3), 125–128. <https://doi.org/10.1002/col.5080030309>
- 26 Walkey, H. C., Harlow, J. A., & Barbur, J. L. (2006). Changes in reaction time and search time with
27 background luminance in the mesopic range. *Ophthalmic and Physiological Optics*, 26(3),
28 288–299. <https://doi.org/10.1111/j.1475-1313.2006.00412.x>
- 29 Watson, A. B., & Ahumada, A. J. (1985). Model of human visual-motion sensing. *Journal of the*
30 *Optical Society of America A*, 2(2), 322–342. <https://doi.org/10.1364/JOSAA.2.000322>
- 31 Wilkins, A. J. (2016). A physiological basis for visual discomfort: Application in lighting design.
32 *Lighting Research and Technology*, 48(1), 44–54. <https://doi.org/10.1177/1477153515612526>

- 1 Wilkins, A., Nimmo-smith, I., Tait, A., Mcmanus, C., Sala, S. Della, Tilley, A., ... Scott, S. (1984). A
2 neurological basis for visual discomfort. *Brain*, 107(4), 989–1017.
3 <https://doi.org/10.1093/brain/107.4.989>
- 4 Wilkins, A. J. (1995). *Visual stress*. Oxford: Oxford University Press.
- 5 Wilkins, A. J., & Hibbard, P. B. (2014). Discomfort and hypermetabolism. *AISB 2014 - 50th Annual*
6 *Convention of the AISB*, (April).
- 7 Wyszecki, G., & Stiles, W. S. (2000). *Color science: Concepts and methods, quantitative data and*
8 *formulae* (2nd ed.). New York: Wiley.
- 9 Yoshimoto, S., Okajima, K., & Takeuchi, T. (2016). Motion perception under mesopic vision. *Journal*
10 *of Vision*, 16(1), 1–15. <https://doi.org/10.1167/16.1.16>.doi
- 11 Yoshimoto, S., Garcia, J., Jiang, F., Wilkins, A. J., Takeuchi, T., & Webster, M. A. (2017). Visual
12 discomfort and flicker. *Vision Research*, 138, 18–28. <https://doi.org/10.1016/j.visres.2017.05.015>
- 13 Yoshimoto, S., Jiang, F., Takeuchi, T., Wilkins, A. J., & Webster, M. A. (2019). Adaptation and visual
14 discomfort from flicker. *Vision Research*, 160(April), 99–107.
15 <https://doi.org/10.1016/j.visres.2019.04.010>
- 16 Yoshimoto, S., & Takeuchi, T. (2013). Visual motion priming reveals why motion perception
17 deteriorates during mesopic vision. *Journal of Vision*, 13(8), 1–21. <https://doi.org/10.1167/13.8.8>
- 18

Figure 1

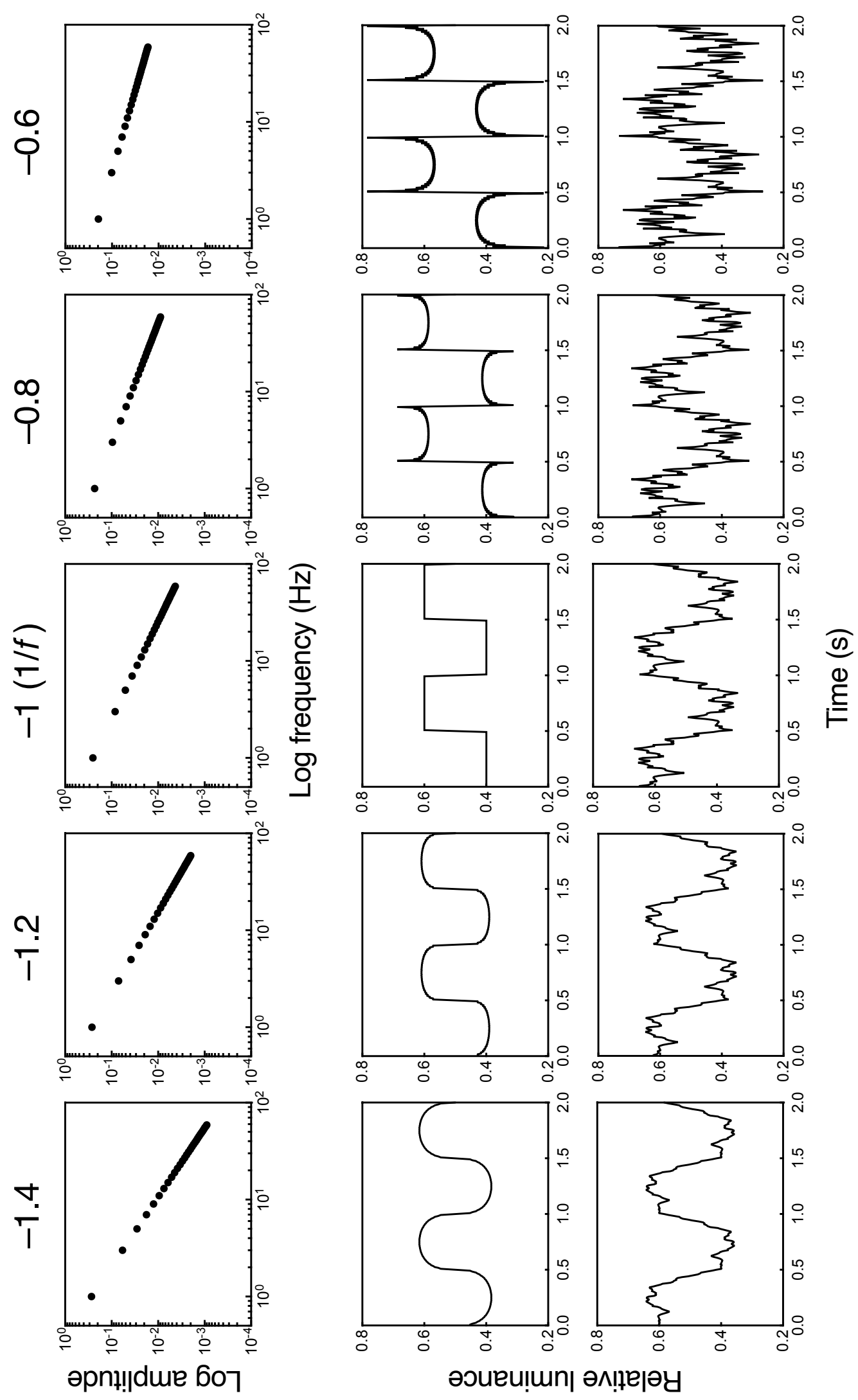


Figure 2

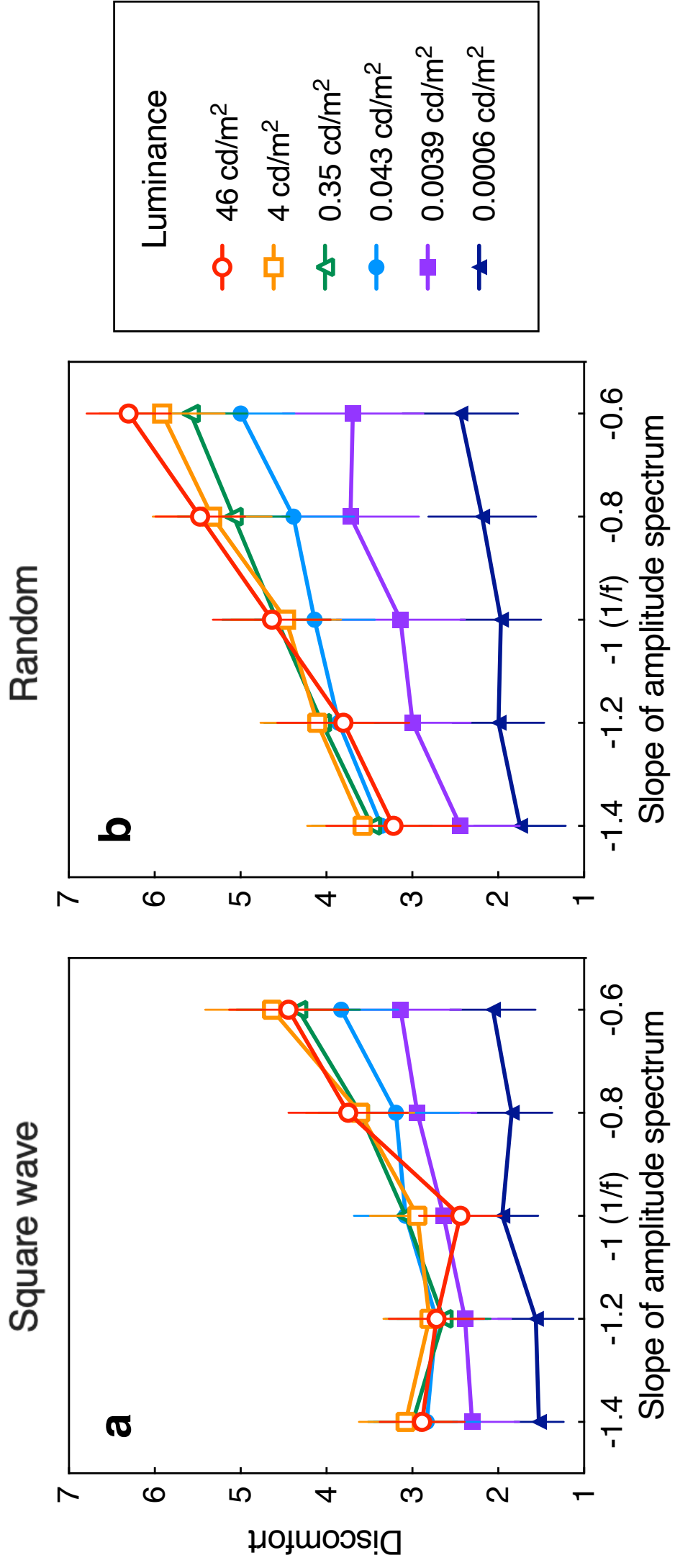


Figure 3

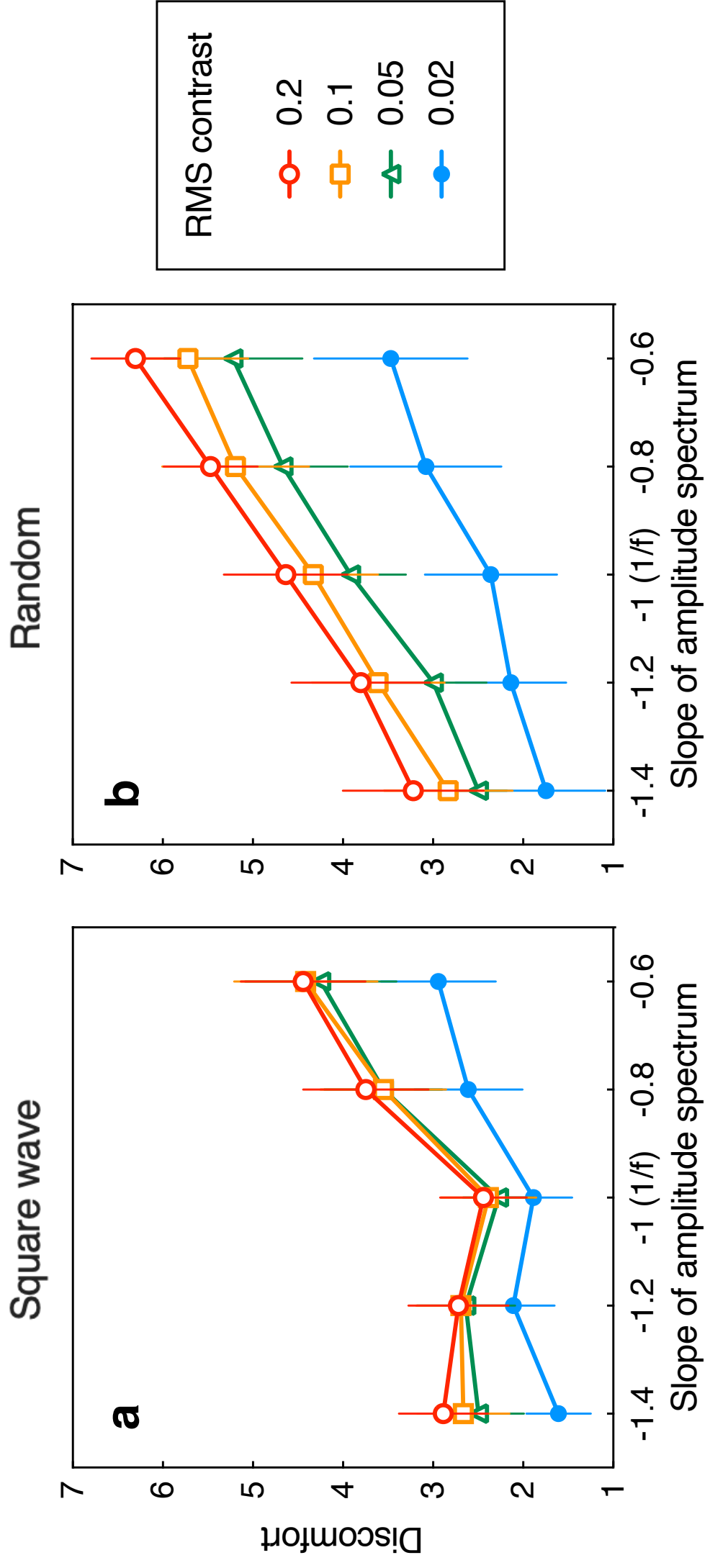


Figure 4

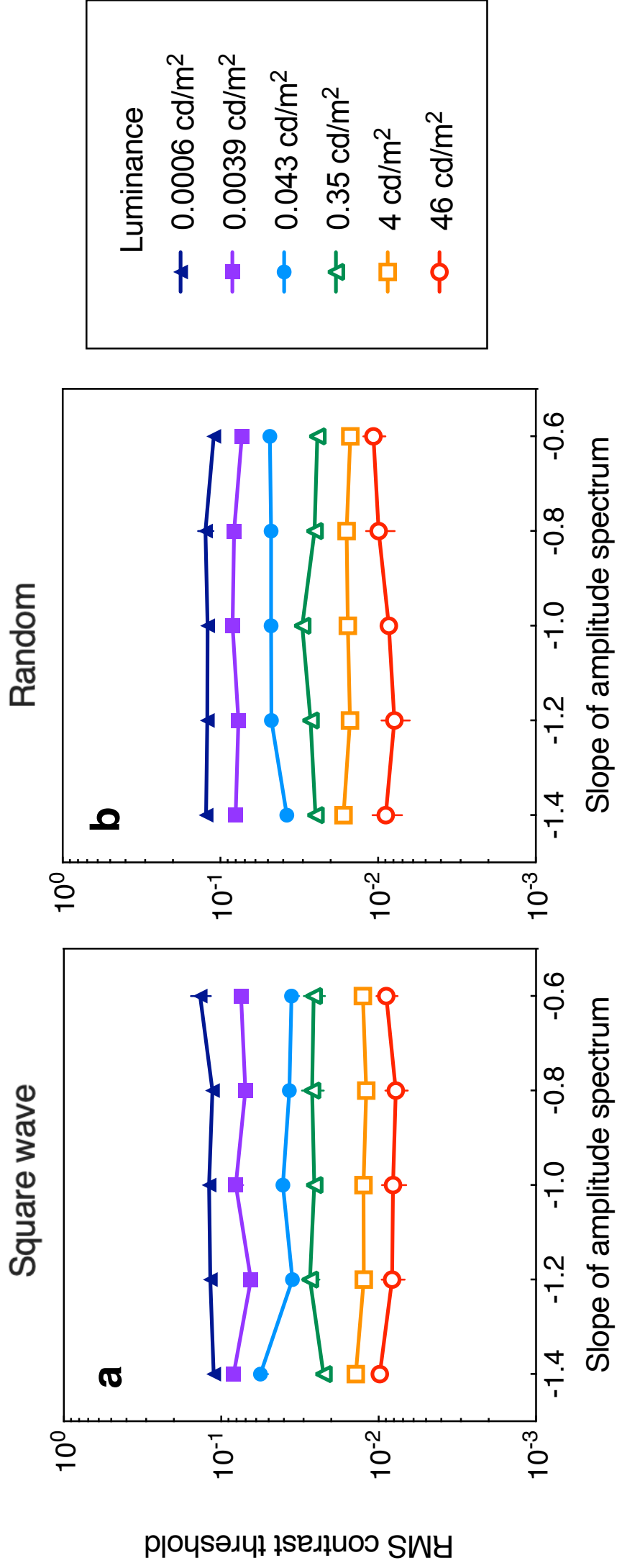


Figure 5

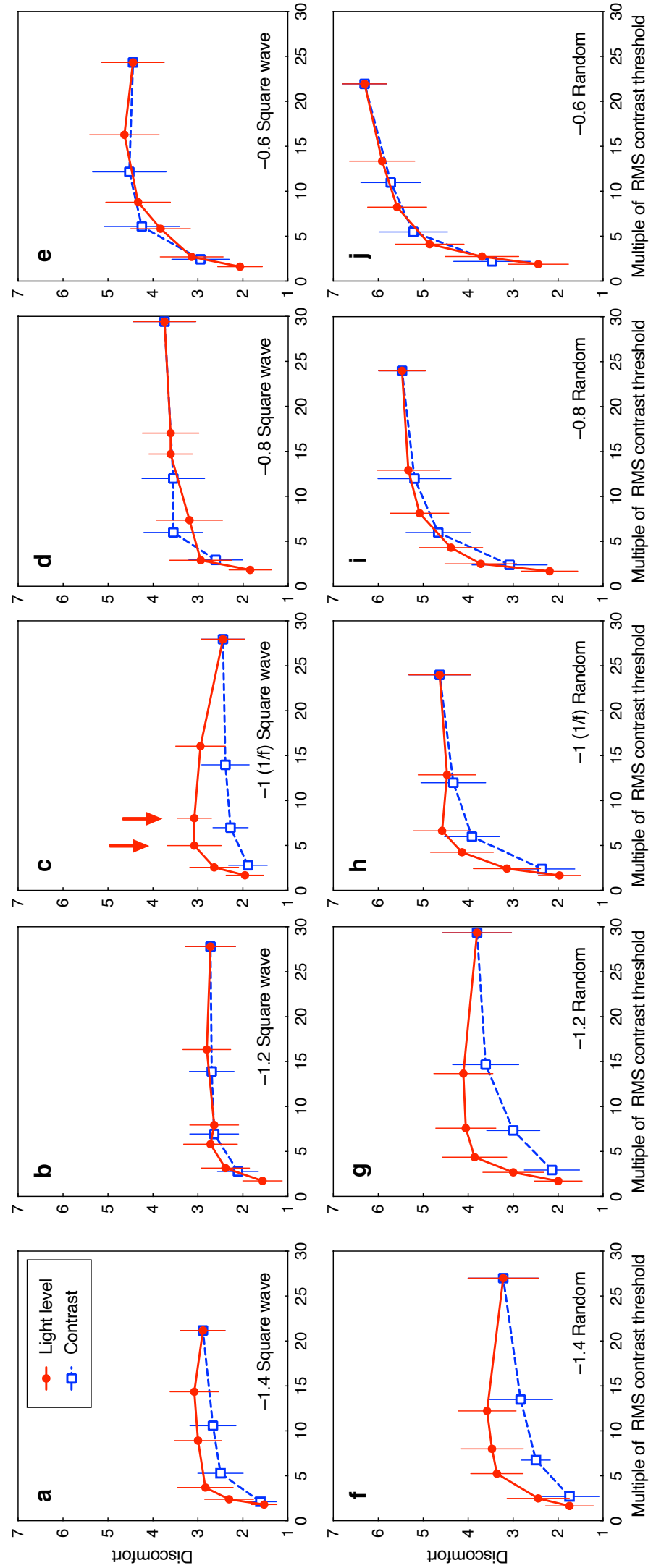


Figure 6

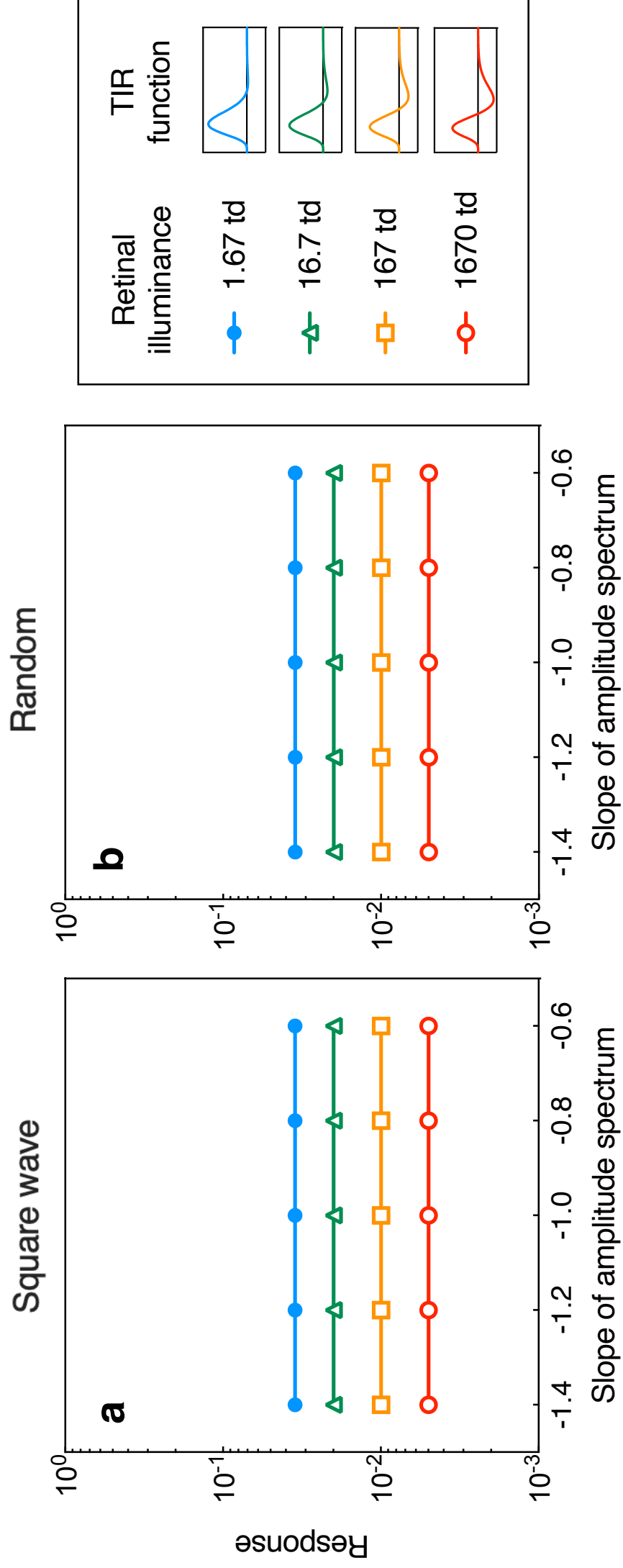
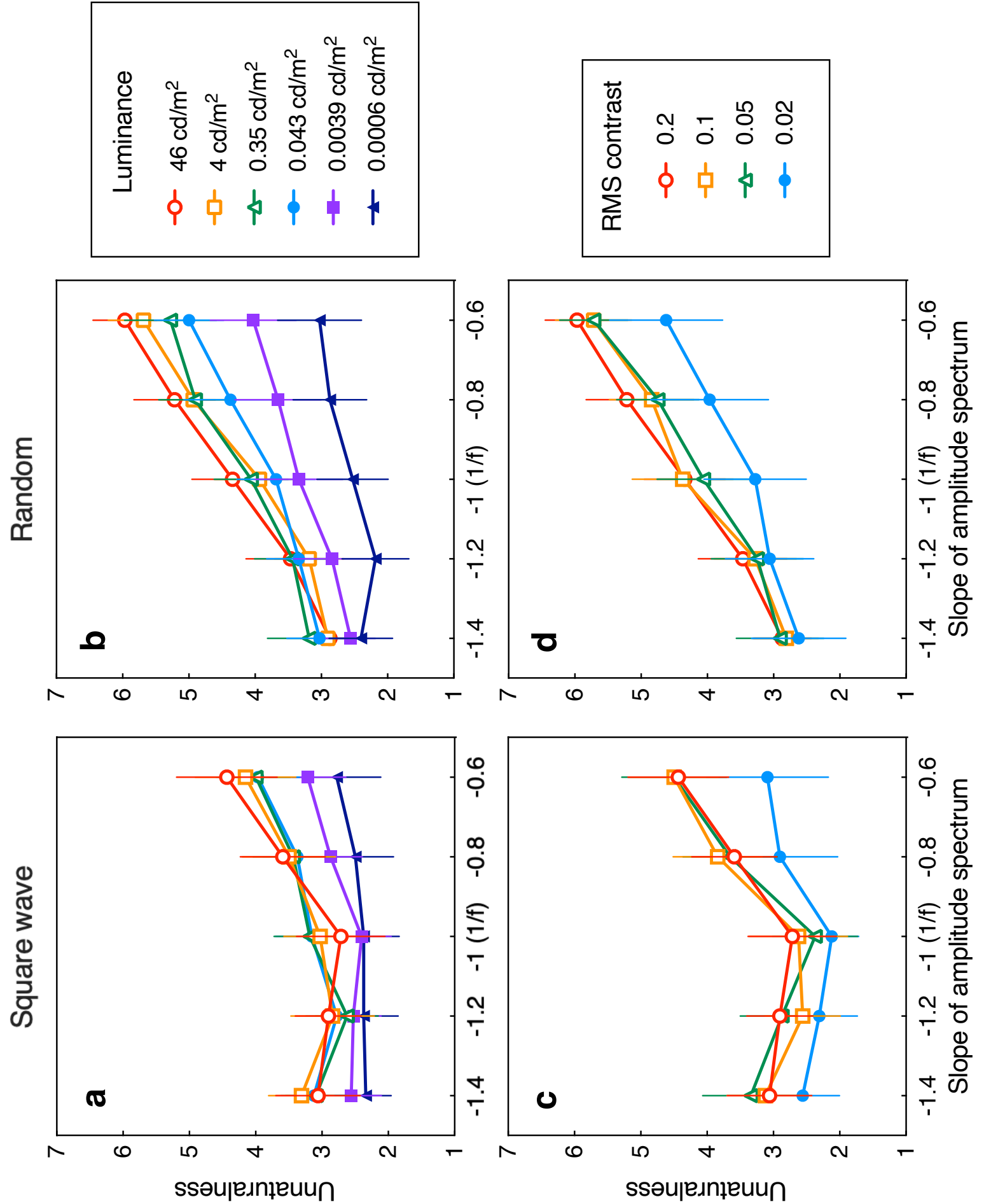


Figure 7



Supplementary Material

[Click here to download Supplementary Material: material_vr_r1.pptx](#)

CReditT author statement

Sanae Yoshimoto: Conceptualization, Methodology, Software, Formal analysis, Investigation, Resources, Writing – Original Draft, Visualization, Funding acquisition

Fang Jiang: Writing – Review & Editing, Funding acquisition

Tatsuto Takeuchi: Conceptualization, Validation, Investigation, Writing – Original Draft, Supervision, Project administration, Funding acquisition

Arnold J. Wilkins: Conceptualization, Methodology, Validation, Writing – Review & Editing, Supervision

Michael A. Webster: Conceptualization, Methodology, Validation, Writing – Review & Editing, Supervision, Funding acquisition