



Review

Cite this article: Hofmann TA, Atkinson W, Fan M, Simkin AJ, Jindal P, Lawson T. 2025 Impact of climate-driven changes in temperature on stomatal anatomy and physiology. *Phil. Trans. R. Soc. B* **380**: 20240244.

<https://doi.org/10.1098/rstb.2024.0244>

Received: 16 November 2024

Accepted: 6 January 2025

One contribution of 21 to a theme issue 'Crops under stress: can we mitigate the impacts of climate change on agriculture and launch the 'Resilience Revolution'?'.

Subject Areas:

plant science

Keywords:

stomata, climate change, heat, stomatal density, water-use efficiency

Author for correspondence:

Tracy Lawson

e-mails: tlawson@essex.ac.uk;

tlawson3@illinois.edu

[†]Present address: School of Integrative Biology, Morrill Hall, 505 S Goodwin Ave, Suite 286, Urbana, IL, USA.

[‡]Present address: Department of Plant Biology & Institute for Genomic Biology, University of Illinois at Urbana-Champaign, Urbana, IL, 61801, USA.

Impact of climate-driven changes in
temperature on stomatal anatomy
and physiology

Tanja A. Hofmann^{1,†}, William Atkinson¹, Mengjie Fan¹, Andrew J. Simkin¹,
Pratham Jindal¹ and Tracy Lawson^{1,2,‡}

¹School of Life Sciences, University of Essex, Wivenhoe Park, Colchester, UK

²Department of Plant Biology, University of Illinois at Urbana-Champaign, Urbana, IL, USA

TL, 0000-0002-4073-7221

Climate-driven changes in temperature are likely to have major implications for plant performance including impacts on stomatal conductance (g_s), gaseous exchange, photosynthesis, leaf temperature and plant water use. Stomatal conductance is not only vital for carbon assimilation but also plays a key role in maintaining optimum leaf temperatures for cellular processes. Higher g_s facilitates both CO₂ uptake and enhanced evaporative leaf cooling, however, most likely at the cost of greater water loss and lower water-use efficiency. Lower g_s helps to maintain overall plant water status but at the expense of C uptake with reduced evaporative cooling which, at elevated temperatures, could be lethal. It is therefore important for g_s to balance these competing demands; however, with rapid changes in temperature due to climate change, stomatal engineering may be required to ensure that this balance is achieved and different strategies for different crops in different environments may be needed. Here, we review current knowledge of stomatal anatomical and behavioural responses to temperature-driven changes, focusing on both rising temperatures and extreme heat events and potential genetic targets for manipulation of relevant stomatal characteristics.

This article is part of the theme issue 'Crops under stress: can we mitigate the impacts of climate change on agriculture and launch the 'Resilience Revolution'?'.

1. Introduction

Stomata are small adjustable pores found on most aerial parts of plants, including leaves, stems and reproductive structures [1], with each stoma consisting of two specialized cells in the epidermis (guard cells, GC) that are responsible for controlling stomatal aperture [2]. Since the leaf cuticle is largely impermeable to gases, stomatal pores are crucial in regulating water loss through transpiration and CO₂ uptake for photosynthesis, accounting for approximately 95% of all gaseous fluxes through plants in terrestrial systems [3], with considerable implications for global hydrological and carbon cycles [4,5]. Stomata continually adjust aperture in response to fluctuations in environmental stimuli in order to balance photosynthetic CO₂ demands with water loss for evaporative cooling [6,7]. Greater stomatal conductance has been correlated with crop yield in wheat, as it removes diffusional constraints of CO₂ into the leaf for photosynthesis *and* enhances evaporative leaf cooling that maintains suitable temperatures for physiological processes [8]. Additionally, changes in climatic conditions can alter stomatal development and patterning [9]. Understanding stomatal anatomy and function due

to changing environmental conditions is thus essential to evaluate the impact of climate change on plant growth, productivity and crop yield.

In order to function efficiently plants must integrate changing environmental signals in a hierarchical manner, adjusting stomatal behaviour to balance the ratio of CO₂ fixed relative to water transpired, known as water-use efficiency (WUE). Stomata adjust aperture via changes in GC turgor in response to both internal and external cues [10]. Generally, stomata open with increasing light, low CO₂ concentration [CO₂], high temperature and low vapour pressure deficit (VPD) [11–15], with stomatal closure initiated by the opposite conditions. At any given moment in time, stomata must respond to combinations of these factors and the hierarchy of these responses is species-specific [16].

WUE is used as a critical measure of a plant's ability to maintain photosynthesis and water status across a range of conditions and is often measured as the ratio of plant biomass to water lost by transpiration. Intrinsic WUE (W_i) (measured as the photosynthetic rate (A) divided by stomatal conductance (g_s); [10,17,18]) provides a physiological assessment of the trade-off between photosynthetic carbon gain and the control of water loss by stomatal behaviour. High g_s enables high CO₂ assimilation (A) but also leads to greater water loss [18–22]. Conversely, low g_s restricts CO₂ uptake and negatively impacts on A [23,24] and biomass accumulation as a consequence [8]. A strong correlation between g_s and A has been demonstrated by many studies [20,23,25–28], however, this relationship, although conserved, is not always constant [29]. Under dynamic conditions changes in g_s can be an order of magnitude slower than adjustments in A , which leads to a disconnect between the two parameters [18,21,30,31], impacting both W_i and assimilation rate in dynamic environments such as the field [18]. The magnitude and rapidity of these kinetic responses are also influenced by changing climatic conditions [16] and have gained increasing attention as a potential target for manipulation to improve both A and g_s [18,20,21,32]. Dumbbell-shaped GCs (which include many C4 grasses/crops) are generally associated with faster stomatal responses compared to C3 kidney-shaped GCs [2,31,33,34], a characteristic that may well confer significant advantages during more extreme temperature fluctuations of future climates. More rapid adjustments in aperture to dynamic environmental conditions enable plants to optimize water use, leaf temperature and photosynthetic carbon gain, which can buffer longer term changes in temperature.

Stomatal conductance is determined by anatomical features and functionality, both of which are species-specific and influenced by internal signals and environmental cues. Substantial work on stomatal patterning has elucidated many of the genes and regulatory pathways involved in stomatal development (stomatal density (SD) and size) and the impact of the environment on these. The mechanisms of osmoregulation for GC turgor changes are also well established, although further work is needed to fully understand all components of the signal transduction pathways that trigger movement. Several studies have manipulated genes within both pathways to alter SD and stomatal behaviour, with both positive and negative consequences for leaf physiology, illustrating the potential of genetic manipulation for crop improvements (see §2 below).

Climate change is predicted to result in a global temperature rise of 2.6–4.8°C by the end of the century [35], which, along with an increasing frequency of extreme temperature episodes [36], will have severe impacts on large areas of terrestrial ecosystems [37]. The frequency of these events will differ depending on geographical location, with more frequent episodes in the Northern Hemisphere (figure 1), which includes key agricultural land. Global warming is likely to influence stomatal behaviour directly as well as indirectly, via temperature-mediated changes in assimilation rate, transpiration, VPD and plant water status [38], while stomatal anatomical features, such as SD, are also impacted directly by heat during stomatal development [39–41]. Given the link between stomatal conductance, transpiration and photosynthesis/yield (see Introduction), any heat-induced change in g_s , caused by alterations in SD and/or behaviour, has significant implications for crop productivity in future climates [42].

Here, we review current knowledge of stomatal anatomical and behavioural responses to temperature-driven changes, focusing on both rising temperatures and extreme heat events. Potential genetic targets for manipulation of relevant stomatal characteristics are discussed to illustrate the possible positive and negative impacts on photosynthesis, plant productivity and crop yield.

2. Impact of elevated temperature on genetic control of stomatal development and anatomical features

Stomatal patterning and SD are under genetic control, involving the signal peptides EPIDERMAL PATTERNING FACTORS 1 and 2 (EPF1/2) and STOMAGEN (EPFL9), which interact with receptor components TooManyMouths (TMM) and receptor kinases ERECTA (ER) or ERECTA-LIKE (ERL1 and 2), to activate mitogen-activated protein (MAP) kinases (e.g. YODA MAPKKK), which in turn inhibits transcription factors such as SPEECH-LESS (SPCH), MUTE and FAMA [43]. EPF1 and 2 activate MAP, decreasing SPCH and SD, whereas STOMAGEN has the opposite effect on the signalling cascade resulting in the development of a greater number of stomata on leaf surfaces [44–46]. Several studies have recently demonstrated the influence of heat on the genetic control of stomatal development [39–41]. For example, HEAT SHOCK PROTEINS 90 (HSP90s) convey heat-stress signals via the YODA cascade causing SPCH to break down and resulting in decreased stomatal densities ([47]; figure 2). Lau *et al.* [41] also highlighted the role of the PIF4 transcription factor, which accumulates at high temperatures and suppresses the expression of SPCH with similar reductions in SD. The PIF gene family is commonly associated with the repression of light signalling and PIF4 in particular has been linked to the auxin pathway [48], increasing transcription of the auxin-responsive gene IAA29 at high temperatures, which is involved in cell elongation and shade-avoidance responses. PIF4 may thus play an important role in coordinating stomatal development and density in response to both temperature and light [49], emphasizing the importance of considering combined effects of environmental factors on stomatal characteristics. Given the dual role of stomata in both CO₂ uptake and water loss through transpiration, such combined responses are essential in balancing the often-conflicting demands experienced by the plant to maintain photosynthetic rates while limiting water loss

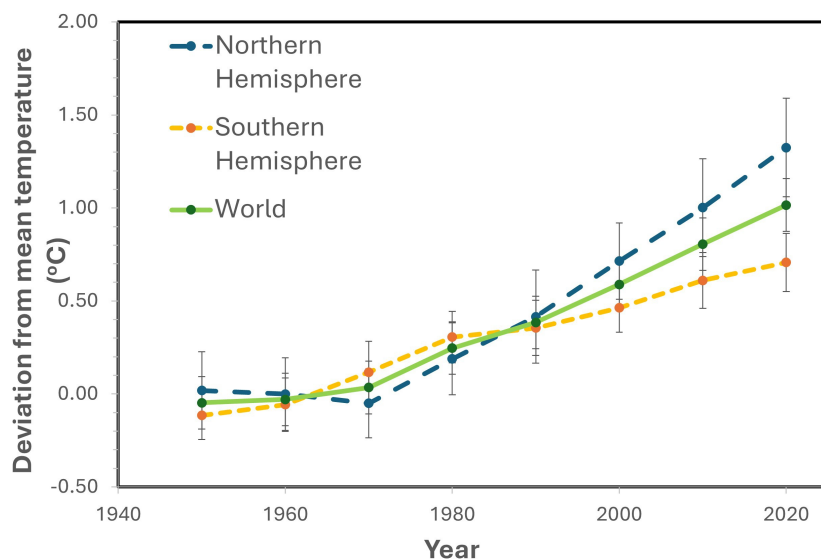


Figure 1. Global warming: comparison of combined land-surface air and sea-surface water temperature anomalies (mean \pm s.d. for each decade between 1950 and present given as the deviation from the 1951–1980 mean) of Northern and Southern Hemispheres and World (data were obtained from <https://ourworldindata.org/>).

to sustain leaf temperature via evaporative cooling. Li *et al.* [39] similarly showed that a number of stomatal lineage genes (SPCH, SCR, FAMA, EPF1 and YODA) were tightly regulated by both light intensity and temperature in *Camellia sinensis* cultivars, with heat stress generally leading to the repression of stomatal development, via lower expression levels of SPCH, SCR and FAMA alongside higher expression levels of negative regulators EPF1 and YODA. These studies highlight, alongside others [50], a number of potential targets for genetic improvement of WUE in changing climatic conditions, conveying water conservation, however, at the expense of a higher leaf temperature that could lower *A*. Additionally, a recent study by Lang *et al.* [51] showed that while core genes involved in stomatal development are under strong evolutionary constraint, regulatory genes show allelic variation enabling phenotypic plasticity and local adaptation. This study highlights the potential to exploit such natural variation of crop germplasms identified by genome-wide association studies and quantitative trait loci analyses to provide potential natural alleles that adapt well to the environment and thus are promising breeding targets.

Reduced SD in response to high temperatures has also been reported in herbarium specimens of *Quercus robur* [52] and *Pinus* [53], as well as *Brassica oleracea capitata* [54], while, in contrast, no response was seen in *Brassica oleracea acephala*, the C4 species *Zea mays* [54,55] and *Panicum maximum* [56], and higher SD have been reported in bluebunch wheatgrass, Norway spruce, Scots pine and *Dodonaea viscosa* [57–59], as well as roses [60]. It is, however, difficult to conclude that the observed increases in SD in the latter studies were the direct result of heat, as authors investigated the impact of other environmental parameters, such as concentrations of ozone, CO₂ or water availability, respectively, alongside higher temperatures [54,55,57]. While these combined effects clearly represent natural conditions and reflect likely climate change scenarios, the observed species-specific variations in SD may be due to these combinations rather than temperature alone.

Rising temperatures impact stomatal size (SS) as well as density [52,61,62], with similarly varied effects on SS reported for different plant species. For example, Kapadiya *et al.* [63] found smaller stomatal length in heat-tolerant wheat varieties, compared with heat-susceptible plants when grown at different temperatures. Decreases in stomatal size with heat were also observed in four alpine *Kobresia* meadow species by Zhang *et al.* [64], as well as increases in *Lolium perenne* and maize [65,66] and no change in Douglas fir and *Dodonaea viscosa* [67,68]. Again, these studies often investigated temperature in combination with changes in other environmental factors, making causative conclusions for temperature alone difficult.

A close relationship between SD and SS has been reported for many species and under various conditions, with higher density often coinciding with smaller stomata and vice versa [2]. Wu *et al.* [69] found no change in SS in *S. superba* with elevated temperature, despite lower SD. In contrast, no effect of temperature on SD was reported in *S. rehderianum*, yet there was a significant decrease in SS [69]. On the other hand, both Li *et al.* [39] and Rodríguez *et al.* [54] demonstrated an increase in SS alongside a decrease in SD, which allowed plants grown at high temperatures to maintain the same *g_s* as those experiencing lower temperatures, demonstrating the potential trade-off [70] and the importance of considering functional changes in combination with anatomical features in response to heat stress to fully understand the impact on *g_s* [16].

3. Impact of elevated temperature on stomatal behaviour

Even greater interspecific variation has been reported in the behavioural response of *g_s* to elevated temperatures [16,71]. Stomatal conductance may increase with rising temperature [38,72–74], decrease [75,76] or not respond directly at all [73,75,77], dependent on species and experimental protocol (growth conditions and experimental temperature ranges used). Across a large temperature range, a bimodal response may be seen [78], with *g_s* initially increasing, reaching a peak value before declining and then potentially rising again at higher temperatures [16], as plants attempt to balance CO₂ uptake with evaporative cooling and water loss. These responses may be mediated by combined changes in environmental conditions. For example, elevated [CO₂] may dampen the peaks in temperature responses as [CO₂] is sufficient to maintain *A*, while drought/reduced water availability

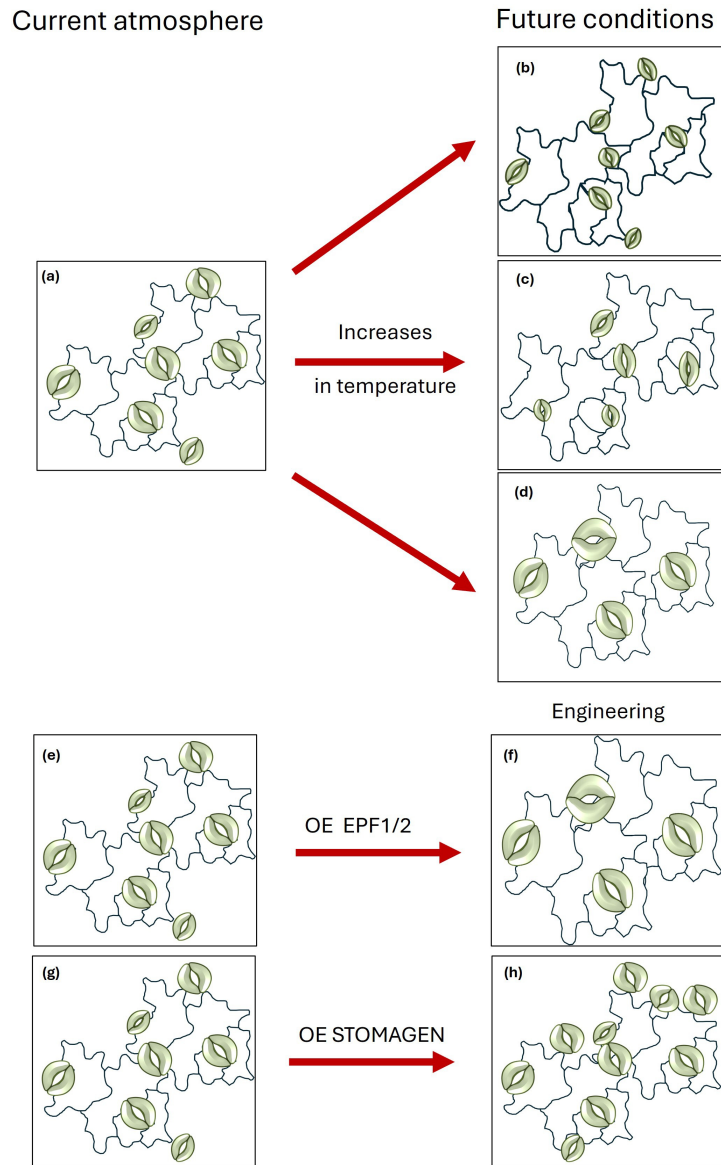


Figure 2. An illustration of the effect of elevated temperature on stomatal patterning, density (SD) and size (SS). (a) Current atmospheric, (b–d) possible future scenarios at higher temperatures that alter SD and SS: (b) no change in SD and reduced SS; (c) reduced SD and SS; (d) reduced SD and increased SS. Engineering using overexpression (OE) of EPF1/2 leads to reduced SD and typically greater SS (e,f), while OE of STOMAGEN increases SD and typically reduces SS but can also lead to stomatal clustering (g,h).

could reduce the initial response as water saving may become the main driver until lethal leaf temperatures are reached (figure 3).

Furthermore, interactions between environmental factors themselves must be considered to draw conclusions about direct effects. For instance, as leaf temperature rises so does VPD, which generally causes stomata to close [79] and most studies attribute this to a higher VPD, rather than heat itself. However, g_s did not decline with combined increases of temperature and VPD in a number of evergreen tree and herbaceous species, suggesting that a rise in temperature directly triggers stomatal opening [74]. Similarly, when VPD remained at 1 kPa and temperature was increased from 30 to 40°C, g_s was amplified by over 40% in both *Pinus* and *Populus* sp., showing a strong direct response of g_s to temperature in these species [38]. The same authors, and others [80], also demonstrated a decoupling of stomatal behaviour from mesophyll photosynthesis at high temperatures regardless of VPD, contradicting others who proposed that increases in g_s with rising temperature are inseparably linked to assimilation rates [81] and uncoupling occurred only due to transpiration-driven stomatal closing responses caused by a higher VPD at extreme temperatures [82]. However, any direct response of g_s to temperature and decoupling from photosynthesis warrants further consideration to inform models of stomatal control over photosynthesis [83–85], as these generally assume that the relationship between A and g_s is conserved over a wide range of environmental conditions, including temperature. In the same context, De Kauwe *et al.* [86] also pointed out the importance of such considerations to improve existing climate model projections. Recently, Mills *et al.* [87] have provided an excellent review of the direct response of stomata to temperature, which included the impact of various environmental factors on these responses and the natural species-specific variation.

Plants acclimate to their growth environments leading to species grown in similar thermal conditions exhibiting comparable patterns of g_s responses across a given temperature range, albeit at different magnitudes [88,89]. This may be due to both developmental alterations of stomatal patterning based on temperature altering SD (see §2 above), as well as behavioural adjustments impacting on stomatal opening. Optimal temperature ranges and tolerance to high temperatures are determined

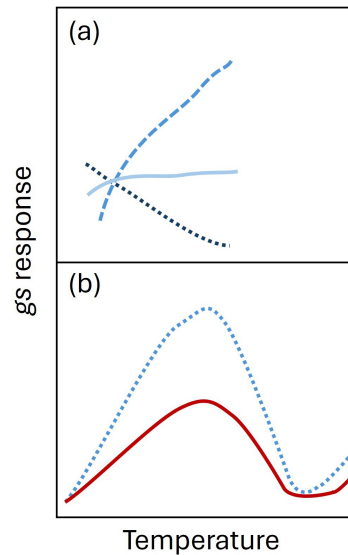


Figure 3. Species-specific g_s responses to increasing temperature. (a) Stomatal conductance has been reported to initially increase (mid-blue dashed line), decrease (dark blue dotted line) or not change (light blue solid line) with rising temperature. (b) Bimodal response in g_s has been shown in some species particularly with extreme temperatures (blue dotted line), and the magnitude of this response can be influenced by changes in other environmental factors such as elevated $[\text{CO}_2]$ (red solid line).

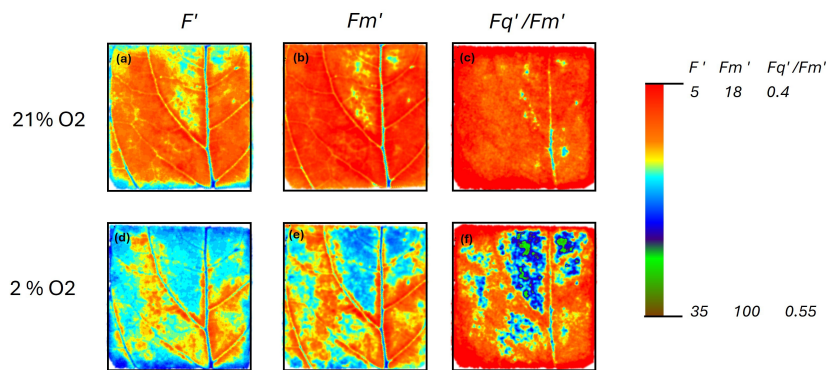


Figure 4. Non-uniform stomatal behaviour causes heterogeneous g_s . The influence of stomatal behaviour can be visualized by comparing chlorophyll fluorescence imaging of photosynthetic efficiency Fq'/Fm' at 21% O_2 (a–c) and 2% O_2 concentrations (d–f). Images of steady state chlorophyll fluorescence, F' (a,d) at $750 \mu\text{mol m}^{-2} \text{s}^{-1}$ PPFD, and maximum chlorophyll fluorescence in the light; Fm' taken following a saturating pulse (b,e) were used to build images of the operating efficiency of PSII; Fq'/Fm' using the equation $Fm' - F'/Fm'$ (c,f). At 2% O_2 , photorespiration is removed, and therefore the chlorophyll fluorescence image of photosynthetic efficiency (Fq'/Fm') illustrates patterns of use of the end products of electron transport for photosynthetic CO_2 fixation, which reflects where stomata are open to allow CO_2 to enter. Areas with smaller stomatal apertures (at 2% O_2) have a lower Fq'/Fm' as there is a reduced sink capacity for end products of electron transport as there is no O_2 for photorespiration and limited CO_2 , demonstrating the influence of g_s on photorespiration that was clearly increased in the blue area.

by the combination of all physiological adaptations and responses of a plant, including, e.g. kinetics of photosynthetic enzymes, which are species-specific [90,91]. While stomatal opening with increasing temperature has been shown to occur regardless of photosynthetic biochemistry [92], given the different optimum growth temperatures of C3 (28–30°C) and C4 (26–35°C) plants as well as species-specific tolerance levels to high temperatures [93], it is likely that different magnitudes of g_s responses to increasing global temperatures are found when comparing these plant types [16].

Data using model simulations in conjunction with experimental evidence indicated that stomatal behaviour of C3 plants is more strongly influenced by temperature than C4 plants [94]. Additionally, stomatal closure impacts more severely on assimilation rates in C3 plants, as the carbon concentrating mechanism associated with C4 plants enables them to maintain higher A when g_s is lower. Crafts-Brandner *et al.* [95] demonstrated that A was inhibited at leaf temperatures above 38°C in C4 maize, however, transpiration rate increased with leaf temperature, indicating that inhibition was biochemical and not associated with stomatal closure. When exposed to combinations of soil moisture statuses and temperature ranges, a reduction in g_s in waterlogged soils occurred in maize and sorghum, without temperature dependence, while in millet and rice changes in g_s were strongly associated with temperature variations [96], showing again clear species-specific differences in responses. Any temperature-induced stomatal closure is also likely to increase photorespiratory losses in C3 plants, as a lower g_s restricts CO_2 availability for photosynthesis [97,98], exposing Rubisco to relatively higher concentrations of O_2 , which together with an increase in leaf temperature further stimulates photorespiration [99]. Furthermore, changes in temperature alter VPD and plant water status, which can induce patchy stomatal behaviour [100]. This spatial heterogeneity in stomatal aperture over the leaf surface results in small areas of the leaf having distinctly different ('patchy') g_s values. The impact of patchy behaviour on carbon fixation and photorespiration can be visualized by comparing chlorophyll fluorescence images

of photosynthetic efficiency (F_q'/F_m') at 2 and 21% O₂ concentrations [101]. Low O₂ removes photorespiration, and therefore enables spatial photosynthetic efficiency to be imaged. Photosynthetic efficiency is high when stomatal apertures are also high and CO₂ fixation uses the end products of electron transport. The uniformity observed in these areas at 21% O₂ shows where photorespiration was taking place and illustrates the impact of g_s on these processes (figure 4).

4. Genetic control of temperature-dependent stomatal responses at extreme temperatures

With changing climates plants may experience episodic extreme temperatures that are likely to become more frequent in the future [102], with leaf temperature increases of 10–15°C above ambient resulting in severe heat stress, negatively impacting growth [103] (figure 1). Rice plants over-expressing EPF1 with reduced SD and SS were able to maintain photosynthesis at high temperature (40°C) and severe drought stress, due to conservation of water both before and during the drought event, enabling the mutants to increase g_s (via increased aperture) at 40°C to levels equivalent to the control lines [104]. Although the increased g_s incurred a reduction in W_i , these plants showed greater survival under drought conditions, indicating that stomatal anatomical changes could be beneficial under water stress and extreme temperatures. Fine-tuning stomatal characteristics, therefore, holds great promise to produce crop plants that are able to survive and perform in future atmospheres [104].

While stomatal opening at high temperature has been well established in many plant species, the exact mechanism is less well understood. Using epidermal peels of *Arabidopsis*, Kostaki *et al.* [105] suggested that full stomatal opening at high temperature requires blue light and involves phototropin photoreceptors, with only partial reliance on their downstream target BLUE LIGHT SIGNALING1 (BLUS1; [106,107]), as well as plasma membrane (PM) H⁺-ATPase activity [105]. However, how and which of these signalling components are influenced by high temperature remains to be investigated. Pankasem *et al.* [80] used a host of *Arabidopsis* mutants to illustrate that impairment in the blue-light photoreceptors phot1-5/phot2-1 resulted in some reduction in stomatal opening in response to temperature. However, plants with mutations in CO₂ sensing and signalling pathways including ht1, mpk12/mpk4-gc and cbc1/cbc2 entirely lacked a stomatal temperature response, suggesting a direct link to carbon assimilation through reduced internal CO₂ from heat stimulated photosynthesis. The fact that the same outcome was observed in monocot *Brachypodium distachyon* mutants implies this to be a conserved mechanism across plant types. Interestingly, at higher temperatures the link with photosynthesis was uncoupled, as also suggested by others. GC osmoregulation for heat-induced stomatal opening has been suggested to involve triacylglycerol synthesis and degradation (usually associated with the blue-light stomatal response), which provide the energy and carbon skeleton for stomatal opening [108]. In order to explain high temperature-induced stomatal opening in the dark, Devireddy *et al.* [109] presented evidence for a phototropin-independent pathway mediated by reactive oxygen species production, which altered stomatal aperture within minutes. Similarly, Liu *et al.* [103] investigated the control of H₂O₂-induced stomatal closure to identify possible genetic targets to improve heat tolerance in rice. In this study, authors assessed the survival rates following heat stress as a measure of heat tolerance and concluded that mutant plants of the chloroplastic MDHAR (OsMDHAR4) gene had improved heat tolerance via increased stomatal closure and reduced water loss caused by H₂O₂ accumulation, thus concluding that the OsMDHARA4 gene negatively impacts on heat resistance. A more recent study has explored the cell mechanisms involved in the complex and opposing stomatal responses to combined heat and drought stress [110]. This study revealed a signalling pathway integrating both opening and closing responses related to high temperature and drought, via the heat activation of TARGET OF TEMPERATURE 3 (TOT3), which controls the activity of plasma membrane H⁺-ATPases for stomatal opening, and OPEN STOMATA 1, involved in stomatal closure inactivating TOT3 by phosphorylation.

5. Future perspective and engineering guard cells and stomata

A greater understanding of the underlying genetic mechanisms that govern stomatal development coupled with advancements in genetic engineering of stomatal function provides new opportunities to develop crops with greater photosynthesis, W_i and bolstered resistance to climate-change induced stresses, such as high temperature alone as well as in combination with other factors. This is only possible with the advancements of new tools to engineer crops using tissue-specific promoters that restrict expression to cell/tissue/organ type, such as the *Solanum tuberosum* KST1 GC-specific promoter [111,112]. Inducible promoters, such as the β -estradiol vector, can be specifically induced by different environmental cues and are also useful tools for expression under desired conditions or time [113,114]. Recent advancement in promoter editing mediated by CRISPR-Cas9 could also provide new tools for fine-tuning expression levels of desired genes [115], circumventing the need for transgenics that is still under strict regulation in many countries.

Using our knowledge of the impacts of climate change on stomatal patterning and behaviour, in conjunction with such innovative tools could allow us to future-proof crop performance in the face of climate change and global warming specifically.

As stomatal conductance is determined by several stomatal anatomical characteristics as well as functional responses there is a plethora of opportunities to tailor stomatal physiology to create the desired crop ideotype for particular agricultural locations, including those more likely to experience increased warming and heat events (figure 1). Stomatal morphology can be manipulated to control g_s in several ways, including SD, SS and GC shape, as well as by manipulating the epidermal cells that surround them. Manipulating SD has proven to be extremely useful to alter the delicate balance between carbon gain and water loss, which is particularly relevant under high temperature-induced drought conditions. Genetic manipulations decreasing SD have been demonstrated to improve W_i as reviewed recently by Bertolino *et al.* [50]. Reduced SD has been achieved through the overexpression of the epidermal patterning factor EPF1 in a variety of plant species, including *Arabidopsis*, rice, wheat, barley

and poplar [44,104,116–119]. Similarly, overexpression of EPF2 caused up to a 42% reduction in SD in C4 sorghum, resulting in lower g_s and greater W_i , with no effect on A [120]. On the other hand, Lunn *et al.* [121] reported no change in g_s or W_i in EPF2 overexpressing sugarcane despite up to a 38% reduction in SD in these plants, suggesting an increase in stomatal aperture compensating for lower stomatal numbers. Additionally, overexpression of STOMATAL DENSITY and DISTRIBUTION1 (SSD1) reduced SD, g_s , and therefore water consumption in maize and tomato [43,122]. The reduction in SD using these approaches could provide strategies for reducing water consumption during episodes of high evaporative demand driven by higher temperatures. However, this could lead to lethal leaf temperatures that would negatively impact plant performance.

Increasing SD may be useful when aiming to improve crop yields where temperatures are increasing but water scarcity is not a factor to facilitate greater evaporative cooling via transpiration to maintain adequate leaf temperature. Tanaka *et al.* [123] investigated the effects of overexpressing STOMAGEN/EPFL9 in *Arabidopsis* and found that SD was increased by 372%, GCs had significantly reduced cell length and stomatal index was also increased compared to wild type (WT). Transpiration in ST-OX plants was increased by 82%, however, the decrease in W_i was not significant. Interestingly though, the relatively large 30% increase in A did not translate into higher leaf area or whole plant biomass.

Recent work has shown that manipulating EPF1/2 differentially impacts SD on abaxial and adaxial leaf surfaces, with greater increases in SD observed on the abaxial surface in EPF1/2 mutants [124]. Since the adaxial surface has previously been shown to contribute up to 50% of g_s and C assimilation in wheat [125], elucidating the mechanisms that control the development of stomata on the two surfaces could provide a more targeted approach to manipulate SD on different leaf surfaces with a view to improving thermal tolerance and photosynthesis in future climates.

As ultimately operational g_s is determined by the aperture of the pore, manipulating GC metabolism, osmoregulation and/or signalling pathways represents another attractive target for stomatal engineering (using GC-specific promoters; recently reviewed by Lemonnier & Lawson [126]). Manipulating solute transport in particular, by changing the number of transporters, could be used to adjust the rate of ion influx or efflux and osmoregulation in the GCs thereby influencing both overall aperture and therefore g_s as well as possible rapidity of responses, which is particularly important in dynamically changing environments (e.g. rapid temperature fluctuations). Wang *et al.* [127] demonstrated the potential of this approach by overexpressing H⁺-ATPase (AHA2) in *Arabidopsis* under the control of the GC-specific promoter GC1 [128] and reported enhanced stomatal opening that lead to an increase in photosynthesis and plant growth [127]. This strategy could also be used to enhance evaporative cooling. GC-specific downregulation of SUCROSE TRANSPORTER 1 (SUT1) resulted in lower g_s and improved W_i [129], though in conjunction with a decrease in net A , which resulted in reduced growth, although the lower water consumption improved tolerance to water deficit that could provide a route to reducing water loss under high temperatures. Overexpression of a synthetic light-gated K⁺channel BLINK1 in *Arabidopsis* GCs enhanced stomatal kinetics, improving the rate of stomatal opening and closing in response to light changes [130], which often coincide with fluctuations in temperature. The accelerated stomatal kinetics provided by BLINK1 facilitated enhanced carbon assimilation during periods of high light while conserving water when light availability was lower and establishes the potential of increasing the rapidity of stomatal kinetics as a target for improving both A and W_i [10,18,20,21,31].

Improving stomatal kinetics can also be achieved by altering GC sensitivity to intracellular signals. The most well-studied example of this is the dual-function sugar sensing and phosphorylating enzyme hexokinase [131]. When overexpressed in the GCs, transgenic plants exhibited accelerated stomatal closure, reduced g_s and transpiration while the rate of photosynthesis was maintained, increasing W_i [132–135]. Transgenic tomato and *Arabidopsis* plants overexpressing hexokinase in their GCs exhibited reduced transpiration and 20% higher WUE under normal conditions compared with WT, while maintaining comparable rates of A [136]. Co-expression of GC-specific hexokinase together with the tuberization SELF-PRUNING 6A gene (SP6A; under the expression of a leaf/stem-specific StLS1 promoter) in potato [135] resulted in smaller, shorter stomata, leading to approximately 30% lower transpiration with limited effect on A . This led to an approximately 30% increase in WUE in the transgenic lines and a 30–70% higher tuber yield (despite green biomass being lower). Moreover, the tuber yield remained high even under drought and heat stress conditions, while in wild-type plants yield was reduced by approximately 70%, demonstrating the potential of manipulating stomatal processes to future-proof crops in the face of global warming.

Ethics. This work did not require ethical approval from a human subject or animal welfare committee.

Data accessibility. This article has no additional data.

Declaration of AI use. We have not used AI-assisted technologies in creating this article.

Authors' contributions. T.A.H.: writing—original draft; W.A.: writing—original draft; M.F.: resources, writing—original draft; A.J.S.: writing—review and editing; P.J.: resources; T.L.: conceptualization, funding acquisition, resources, writing—original draft.

All authors gave final approval for publication and agreed to be held accountable for the work performed therein.

Conflict of interest declaration. We declare we have no competing interests.

Funding. This research was supported by the: UKRI BBSRC funding BB/T0042741/1; BB/S005080/1; BB/Y000722/1; T.L. was supported by a Royal Society Leverhulme Trusts Senior Research Fellowship (SF/R1/231041).

References

1. Simkin AJ, Faralli M, Ramamoorthy S, Lawson T. 2020 Photosynthesis in non-foliar tissues: implications for yield. *Plant J.* **101**, 1001–1015. (doi:10.1111/tbj.14633)
2. Franks PJ, Farquhar GD. 2007 The mechanical diversity of stomata and its significance in gas-exchange control. *Plant Physiol.* **143**, 78–87. (doi:10.1104/pp.106.089367)
3. Morison J. 2003 Plant water use, stomatal control. In *Encyclopedia of water science* (eds B Stewart, T Howell), pp. 680–685. New York, NY: Marcel Dekker.
4. Hetherington AM, Woodward FI. 2003 The role of stomata in sensing and driving environmental change. *Nature* **424**, 901–908. (doi:10.1038/nature01843)

5. Keenan TF, Davidson E, Moffat AM, Munger W, Richardson AD. 2012 Using model-data fusion to interpret past trends, and quantify uncertainties in future projections, of terrestrial ecosystem carbon cycling. *Glob. Chang. Biol.* **18**, 2555–2569. (doi:10.1111/j.1365-2486.2012.02684.x)
6. Lake JA, Quick WP, Beerling DJ, Woodward FI. 2001 Plant development: signals from mature to new leaves. *Nature* **411**, 154–154. (doi:10.1038/35075660)
7. Jia W, Zhang J. 2008 Stomatal movements and long-distance signaling in plants. *Plant Signal. Behav.* **3**, 772–777. (doi:10.4161/psb.3.10.6294)
8. Fischer RA, Rees D, Sayre KD, Lu Z -M., Condon AG, Saavedra AL. 1998 Wheat yield progress associated with higher stomatal conductance and photosynthetic rate, and cooler canopies. *Crop Sci.* **38**, 1467–1475. (doi:10.2135/cropsci1998.0011183x003800060011x)
9. Chua LC, Lau OS. 2024 Stomatal development in the changing climate. *Development* **151**, dev202681. (doi:10.1242/dev.202681)
10. Lawson T, Blatt MR. 2014 Stomatal size, speed, and responsiveness impact on photosynthesis and water use efficiency. *Plant Physiol.* **164**, 1556–1570. (doi:10.1104/pp.114.237107)
11. Raschke K. 1975 Stomatal action. *Annu. Rev. Plant Physiol.* **26**, 309–340. (doi:10.1146/annurev.pp.26.060175.001521)
12. Outlaw WH. 2003 Integration of cellular and physiological functions of guard cells. *Crit. Rev. Plant Sci.* **22**, 503–529. (doi:10.1080/713608316)
13. Bernacchi CJ, Kimball BA, Quarles DR, Long SP, Ort DR. 2007 Decreases in stomatal conductance of soybean under open-air elevation of [CO₂] are closely coupled with decreases in ecosystem evapotranspiration. *Plant Physiol.* **143**, 134–144. (doi:10.1104/pp.106.089557)
14. Ainsworth EA, Rogers A. 2007 The response of photosynthesis and stomatal conductance to rising [CO₂]: mechanisms and environmental interactions. *Plant Cell Environ.* **30**, 258–270. (doi:10.1111/j.1365-3040.2007.01641.x)
15. Elliott-Kingston C, Haworth M, Yearsley JM, Batke SP, Lawson T, McElwain JC. 2016 Does size matter? Atmospheric CO₂ may be a stronger driver of stomatal closing rate than stomatal size in taxa that diversified under low CO₂. *Front. Plant Sci.* **7**, 1253. (doi:10.3389/fpls.2016.01253)
16. Matthews JSA, Lawson T. 2018 Climate change and stomatal physiology. *Annu. Plant Rev.* 713–752. (doi:10.1002/9781119312994)
17. Blum A. 2009 Effective use of water (EUW) and not water-use efficiency (WUE) is the target of crop yield improvement under drought stress. *Field Crop. Res.* **112**, 119–123. (doi:10.1016/j.fcr.2009.03.009)
18. Lawson T, Viallet-Chabrand S. 2019 Speedy stomata, photosynthesis and plant water use efficiency. *New Phytol.* **221**, 93–98. (doi:10.1111/nph.15330)
19. Naumburg E, Ellsworth DS. 2000 Photosynthetic sunfleck utilization potential of understory saplings growing under elevated CO₂ in FACE. *Oecologia* **122**, 163–174. (doi:10.1007/pl00008844)
20. Lawson T, von Caemmerer S, Baroli I. 2010 Photosynthesis and stomatal behaviour. In *Progress in botany* (eds U Luttge, W Beyschlag, B Budel, D Francis), pp. 265–304. Berlin, Germany: Springer. (doi:10.1007/978-3-642-13145-5_11)
21. Lawson T, Kramer DM, Raines CA. 2012 Improving yield by exploiting mechanisms underlying natural variation of photosynthesis. *Curr. Opin. Biotechnol.* **23**, 215–220. (doi:10.1016/j.copbio.2011.12.012)
22. Matthews JSA, Viallet-Chabrand SRM, Lawson T. 2017 Diurnal variation in gas exchange: the balance between carbon fixation and water loss. *Plant Physiol.* **174**, 614–623. (doi:10.1104/pp.17.00152)
23. Farquhar GD, Sharkey TD. 1982 Stomatal conductance and photosynthesis. *Annu. Rev. Plant Physiol.* **33**, 317–345. (doi:10.1146/annurev.pp.33.060182.001533)
24. Barradas VL, Jones HG, Clark JA. 1994 Stomatal responses to changing irradiance in *Phaseolus vulgaris* L. *J. Exp. Bot.* **45**, 931–936. (doi:10.1093/jxb/45.7.931)
25. Mansfield TA, Hetherington AM, Atkinson CJ. 1990 Some current aspects of stomatal physiology. *Annu. Rev. Plant Physiol. Plant Mol. Biol.* **41**, 55–75. (doi:10.1146/annurev.pp.41.060190.000415)
26. Wong SC, Cowan IR, Farquhar GD. 1979 Stomatal conductance correlates with photosynthetic capacity. *Nature* **282**, 424–426. (doi:10.1038/282424a0)
27. Buckley TN, Mott KA. 2013 Modelling stomatal conductance in response to environmental factors. *Plant Cell Environ.* **36**, 1691–1699. (doi:10.1111/pce.12140)
28. Buckley TN. 2017 Modeling stomatal conductance. *Plant Physiol.* **174**, 572–582. (doi:10.1104/pp.16.01772)
29. Lawson T, Morison JI. 2004 Stomatal function and physiology. In *The evolution of plant physiology* (eds AR Hemsley, I Poole), pp. 217–242. Cambridge, MA: Academic Press. (doi:10.1016/b978-012339552-8/50013-5)
30. Lawson T, Weyers J, A'Brook R. 1998 The nature of heterogeneity in the stomatal behaviour of *Phaseolus vulgaris* L. primary leaves. *J. Exp. Bot.* **49**, 1387–1395. (doi:10.1093/jxb/49.325.1387)
31. McAusland L, Viallet-Chabrand S, Davey P, Baker NR, Brendel O, Lawson T. 2016 Effects of kinetics of light-induced stomatal responses on photosynthesis and water-use efficiency. *New Phytol.* **211**, 1209–1220. (doi:10.1111/nph.14000)
32. Long SP, Taylor SH, Burgess SJ, Carmo-Silva E, Lawson T, De Souza AP, Leonelli L, Wang Y. 2022 Into the shadows and back into sunlight: photosynthesis in fluctuating light. *Annu. Rev. Plant Biol.* **73**, 617–648. (doi:10.1146/annurev-arplant-070221-024745)
33. Grantz DA, Assmann SM. 1991 Stomatal response to blue light: water use efficiency in sugarcane and soybean. *Plant Cell Environ.* **14**, 683–690. (doi:10.1111/j.1365-3040.1991.tb01541.x)
34. Merilo E, Jõesaar I, Brosché M, Kollist H. 2014 To open or to close: species-specific stomatal responses to simultaneously applied opposing environmental factors. *New Phytol.* **202**, 499–508. (doi:10.1111/nph.12667)
35. IPCC. 2013 *Climate change 2013: the physical science basis. Contribution of working group I to the fifth assessment report of the intergovernmental panel on climate change.* (ed. TF Stocker). Cambridge, UK: Cambridge University Press.
36. Perkins SE, Alexander LV, Nairn JR. 2012 Increasing frequency, intensity and duration of observed global heatwaves and warm spells. *Geophys. Res. Lett.* **39**, L053361. (doi:10.1029/2012gl053361)
37. Hansen J, Sato M, Ruedy R. 2012 Perception of climate change. *Proc. Natl Acad. Sci. USA* **109**, 2415–2423. (doi:10.1073/pnas.1205276109)
38. Urban J, Ingwers MW, McGuire MA, Teskey RO. 2017 Increase in leaf temperature opens stomata and decouples net photosynthesis from stomatal conductance in *Pinus taeda* and *Populus deltoides x nigra*. *J. Exp. Bot.* **68**, 1757–1767. (doi:10.1093/jxb/erx052)
39. Li P *et al.* 2023 Variations of stomata development in tea plant (*Camellia sinensis*) leaves in different light and temperature environments and genetic backgrounds. *Hortic. Res.* **10**, 278. (doi:10.1093/hr/uhac278)
40. Driesen E, Van den Ende W, De Proft M, Saeys W. 2020 Influence of environmental factors light, CO₂, temperature, and relative humidity on stomatal opening and development: a review. *Agronomy* **10**, 1975. (doi:10.3390/agronomy10121975)
41. Lau OS *et al.* 2018 Direct control of SPEECHLESS by PIF4 in the high-temperature response of stomatal development. *Curr. Biol.* **28**, 1273–1280. (doi:10.1016/j.cub.2018.02.054)
42. Zhao C *et al.* 2017 Temperature increase reduces global yields of major crops in four independent estimates. *Proc. Natl Acad. Sci. USA* **114**, 9326–9331. (doi:10.1073/pnas.1701762114)
43. Torii KU. 2021 Stomatal development in the context of epidermal tissues. *Ann. Bot.* **128**, 137–148. (doi:10.1093/aob/mcab052)

44. Hara K, Kajita R, Torii KU, Bergmann DC, Kakimoto T. 2007 The secretory peptide gene EPF1 enforces the stomatal one-cell-spacing rule. *Genes Dev.* **21**, 1720–1725. (doi:10.1101/gad.1550707)
45. Hunt L, Gray JE. 2009 The signaling peptide EPF2 controls asymmetric cell divisions during stomatal development. *Curr. Biol.* **19**, 864–869. (doi:10.1016/j.cub.2009.03.069)
46. Sugano SS, Shimada T, Imai Y, Okawa K, Tamai A, Mori M, Hara-Nishimura I. 2009 Stomagen positively regulates stomatal density in *Arabidopsis*. *Nature* **463**, 241–244. (doi:10.1038/nature08682)
47. Samakovli D, Tichá T, Šamaj J. 2020 HSP90 chaperones regulate stomatal differentiation under normal and heat stress conditions. *Plant Signal. Behav.* **15**, 1789817. (doi:10.1080/15592324.2020.1789817)
48. Koini MA, Alvey L, Allen T, Tille CA, Harberd NP, Whitelam GC, Franklin KA. 2009 High temperature-mediated adaptations in plant architecture require the bHLH transcription factor PIF4. *Curr. Biol.* **19**, 408–413. (doi:10.1016/j.cub.2009.01.046)
49. Lucyshyn D, Wigge PA. 2009 Plant development: PIF4 integrates diverse environmental signals. *Curr. Biol.* **19**, R265–R266. (doi:10.1016/j.cub.2009.01.051)
50. Bertolino LT, Caine RS, Gray JE. 2019 Impact of stomatal density and morphology on water-use efficiency in a changing world. *Front. Plant Sci.* **10**, 225. (doi:10.3389/fpls.2019.00225)
51. Lang PLM *et al.* 2024 Century-long timelines of herbarium genomes predict plant stomatal response to climate change. *Nat. Ecol. Evol.* **8**, 1641–1653. (doi:10.1038/s41559-024-02481-x)
52. Beerling DJ, Chaloner WG. 1993 Evolutionary responses of stomatal density to global CO₂ change. *Biol. J. Linn. Soc.* **48**, 343–353. (doi:10.1111/j.1095-8312.1993.tb02096.x)
53. Luomala E, Laitinen K, Sutinen S, Kellomaki S, Vapaavuori E. 2005 Stomatal density, anatomy and nutrient concentrations of Scots pine needles are affected by elevated CO₂ and temperature. *Plant Cell Environ* **28**, 733–749. (doi:10.1111/j.1365-3040.2005.01319.x)
54. Rodríguez VM, Soengas P, Alonso-Villaverde V, Sotelo T, Cartea ME, Velasco P. 2015 Effect of temperature stress on the early vegetative development of *Brassica oleracea* L. *BMC Plant Biol.* **15**, 145. (doi:10.1186/s12870-015-0535-0)
55. Zheng Y, Xu M, Hou R, Shen R, Qi S, Ouyang Z. 2013 Effects of experimental warming on stomatal traits in leaves of maize (*Zea mays* L.). *Ecol. Evol.* **3**, 3095–3111. (doi:10.1002/ece3.674)
56. Habermann E, San Martin JAB, Contin DR, Bossan VP, Barboza A, Braga MR, Groppo M, Martinez CA. 2019 Increasing atmospheric CO₂ and canopy temperature induces anatomical and physiological changes in leaves of the C4 forage species *Panicum maximum*. *PLoS One* **14**, e0212506. (doi:10.1371/journal.pone.0212506)
57. Fraser LH, Greenall A, Carlyle C, Turkington R, Friedman CR. 2009 Adaptive phenotypic plasticity of *Pseudoroegneria spicata*: response of stomatal density, leaf area and biomass to changes in water supply and increased temperature. *Ann. Bot.* **103**, 769–775. (doi:10.1093/aob/mcn252)
58. Kivimäenpää M, Sutinen S, Valolahti H, Häiki E, Riikonen J, Kasurinen A, Ghimire R, Holopainen J, Holopainen T. 2017 Warming and elevated ozone differently modify needle anatomy of Norway spruce (*Picea abies*) and Scots pine (*Pinus sylvestris*). *Rev. Can. Rech.* **47**, 488–499. (doi:10.1139/cjfr-2016-0406)
59. Hill KE, Guerin GR, Hill RS, Watling JR. 2014 Temperature influences stomatal density and maximum potential water loss through stomata of *Dodonaea viscosa* subsp. *angustissima* along a latitude gradient in southern Australia. *Aust. J. Bot.* **62**, 657–665. (doi:10.1071/BT14204)
60. Pandey R, Chacko PM, Choudhary ML, Prasad KV, Pal M. 2007 Higher than optimum temperature under CO₂ enrichment influences stomata anatomical characters in rose (*Rosa hybrida*). *Sci. Hortic.* **113**, 74–81. (doi:10.1016/j.scienta.2007.01.021)
61. McElwain JC, Beerling DJ, Woodward FI. 1999 Fossil plants and global warming at the Triassic-Jurassic boundary. *Science* **285**, 1386–1390. (doi:10.1126/science.285.5432.1386)
62. Yan W, Zhong Y, Shangguan Z. 2017 Contrasting responses of leaf stomatal characteristics to climate change: a considerable challenge to predict carbon and water cycles. *Glob. Chang. Biol.* **104**, 145–157. (doi:10.1111/gcb.13654)
63. Kapadiya KB, Singh C, Bhalara RL. 2017 Effect of higher temperature on leaf anatomy of heat tolerance and heat susceptible wheat genotypes (*Triticum aestivum* L.) by scanning electron microscopy. *J. Pharmacogn. Phytochem.* **6**, 2270–2277.
64. Zhang LR, Niu HS, Wang SP, Li YN, Zhao XQ. 2010 Effects of temperature increase and grazing on stomatal density and length of four alpine Kobresia meadow species, Qinghai-Tibetan Plateau. *Acta Ecol. Sin.* **30**, 6961–6969.
65. Ferris R, Nijs I, Behaeghe T, Impens I. 1996 Elevated CO₂ and temperature have different effects on leaf anatomy of perennial ryegrass in spring and summer. *Ann. Bot.* **78**, 489–497.
66. Zheng Y, Xu M, Hou R, Shen R, Qiu S, Ouyang Z. 2013 Effects of experimental warming on stomatal traits in leaves of maize (*Zea mays* L.). *Ecol. Evol.* **3**, 3095–3111. (doi:10.1002/ece3.674)
67. Apple ME, Olszyk DM, Ormrod DP, Lewis J, Southworth D, Tingey DT. 2000 Morphology and stomatal function of Douglas fir needles exposed to climate change: elevated CO₂ and temperature. *Int. J. Plant Sci* **161**, 127–132. (doi:10.1086/314237)
68. Hill KE, Guerin GR, Hill RS, Watling JR. 2015 Temperature influences stomatal density and maximum potential water loss through stomata of *Dodonaea viscosa* subsp. *angustissima* along a latitude gradient in southern Australia. *Aust. J. Bot.* **62**, 657–665. (doi:10.1071/BT14204)
69. Wu G, Liu H, Hua L, Luo Q, Lin Y, He P, Feng S, Liu J, Ye Q. 2018 Differential responses of stomata and photosynthesis to elevated temperature in two co-occurring subtropical forest tree species. *Front. Plant Sci.* **9**, 467. (doi:10.3389/fpls.2018.00467)
70. Büssis D, von Groll U, Fisahn J, Altmann T. 2006 Stomatal aperture can compensate altered stomatal density in *Arabidopsis thaliana* at growth light conditions. *Funct. Plant Biol.* **33**, 1037–1043. (doi:10.1071/FP06078)
71. Sage RF, Kubien DS. 2007 The temperature response of C3 and C4 photosynthesis. *Plant Cell Environ.* **30**, 1086–1106. (doi:10.1111/j.1365-3040.2007.01682.x)
72. Schulze ED, Lange OL, Evenari M, Kappen LO, Buschbom U. 1974 The role of air humidity and leaf temperature in controlling stomatal resistance of *Prunus armeniaca* L. under desert conditions. *Oecologia* **17**, 159–170. (doi:10.1007/bf00346278)
73. Lu Z, Quiñones MA, Zeiger E. 2000 Temperature dependence of guard cell respiration and stomatal conductance co-segregate in an F2 population of Pima cotton. *Funct. Plant Biol.* **27**, 457–462. (doi:10.1071/PP98128)
74. von Caemmerer S, Evans JR. 2015 Temperature responses of mesophyll conductance differ greatly between species. *Plant Cell Environ.* **38**, 629–637. (doi:10.1111/pce.12449)
75. Sage RF, Sharkey TD. 1987 The effect of temperature on the occurrence of O₂ and CO₂ insensitive photosynthesis in field grown plants. *Plant Physiol* **84**, 658–664. (doi:10.1104/pp.84.3.658)
76. Raven P, Evert R, Eichhorn S. 2005 *Biology of plants*. Oxford, UK: W.H. Freeman and Co. Ltd.
77. Aphalo PJ, Jarvis PG. 1993 An analysis of Ball's empirical model of stomatal conductance. *Ann. Bot.* **72**, 321–327. (doi:10.1006/anbo.1993.1114)
78. Slot M, Garcia MN, Winter K. 2016 Temperature response of CO₂ exchange in three tropical tree species. *Funct. Plant Biol.* **43**, 468–478. (doi:10.1071/FP15320)
79. Arve LE, Kruse OMO, Tanino KK, Olsen JE, Futsaether C, Torre S. 2017 Daily changes in VPD during leaf development in high air humidity increase the stomatal responsiveness to darkness and dry air. *J. Plant Physiol.* **211**, 63–69. (doi:10.1016/j.jplph.2016.12.011)

80. Pankasem N, Hsu PK, Lopez BN, Franks PJ, Schroeder JI. 2024 Warming triggers stomatal opening by enhancement of photosynthesis and ensuing guard cell CO₂ sensing, whereas higher temperatures induce a photosynthesis-uncoupled response. *New Phytol.* **244**, 1847–1863. (doi:10.1111/nph.20121)
81. Santrucek J, Sage RF. 1996 Acclimation of stomatal conductance to a CO₂-enriched atmosphere and elevated temperature in *Chenopodium album*. *Funct. Plant Biol.* **23**, 467–478. (doi:10.1071/pp9960467)
82. Lawson T *et al.* 2014 C₃ photosynthesis in the desert plant *Rhazya stricta* is fully functional at high temperatures and light intensities. *New Phytol.* **201**, 862–873. (doi:10.1111/nph.12559)
83. Farquhar G, Wong S. 1984 An empirical model of stomatal conductance. *Funct. Plant Biol.* **11**, 191–210. (doi:10.1071/PP9840191)
84. Ball JT, Woodrow IE, Berry JA. 1987 A model predicting stomatal conductance and its contribution to the control of photosynthesis under different environmental conditions. In *Progress in photosynthesis research* (ed. J Biggins), pp. 221–224. Dordrecht, The Netherlands: Springer. (doi:10.1007/978-94-017-0519-6_48)
85. Buckley T, Mott K, Farquhar G. 2003 A hydromechanical and biochemical model of stomatal conductance. *Plant Cell Environ* **26**, 1767–1785. (doi:10.1046/j.1365-3040.2003.01094.x)
86. De Kauwe MG, Medlyn BE, Pitman AJ, Drake JE, Ukkola A, Griebel A, Pendall E, Prober S, Roderick M. 2019 Examining the evidence for decoupling between photosynthesis and transpiration during heat extremes. *Biogeosciences* **16**, 903–916. (doi:10.5194/bg-16-903-2019)
87. Mills C, Bartlett MK, Buckley TN. 2024 The poorly-explored stomatal response to temperature at constant evaporative demand. *Plant Cell Environ.* **47**, 3428–3446. (doi:10.1111/pce.14911)
88. Way DA. 2011 The bigger they are, the harder they fall: CO₂ concentration and tree size affect drought tolerance. *Tree Physiol.* **31**, 115–116. (doi:10.1093/treephys/tpr009)
89. Yamori W, Noguchi K, Hanba YT, Terashima I. 2006 Effects of internal conductance on the temperature dependence of the photosynthetic rate in spinach leaves from contrasting growth temperatures. *Plant Cell Physiol.* **47**, 1069–1080. (doi:10.1093/pcp/pcj077)
90. Seemann JR, Badger MR, Berry JA. 1984 Variations in the specific activity of ribulose-1,5-bisphosphate carboxylase between species utilizing differing photosynthetic pathways. *Plant Physiol.* **74**, 791–794. (doi:10.1104/pp.74.4.791)
91. Galmés J, Conesa MÀ, Diaz-Espejo A, Mir A, Perdomo JA, Niinemets Ü, Flexas J. 2014 Rubisco catalytic properties optimized for present and future climatic conditions. *Plant Sci.* **226**, 61–70. (doi:10.1016/j.plantsci.2014.01.008)
92. Kubien DS, von Caemmerer S, Furbank RT, Sage RF. 2003 C₄ photosynthesis at low temperature. A study using transgenic plants with reduced amounts of Rubisco. *Plant Physiol.* **132**, 1577–1585. (doi:10.1104/pp.103.021246)
93. Sánchez B, Rasmussen A, Porter JR. 2014 Temperatures and the growth and development of maize and rice: a review. *Glob. Chang. Biol* **20**, 408–417. (doi:10.1111/gcb.12389)
94. Tian W, Su C, Zhang N, Zhao Y, Tang L. 2024 Simulation of the physiological and photosynthetic characteristics of C₃ and C₄ plants under elevated temperature and CO₂ concentration. *Ecol. Model.* **495**, 110805. (doi:10.1016/j.ecolmodel.2024.110805)
95. Crafts-Brandner SJ, Salvucci ME, Schultz CJ, Rumsey MP, Johnson KL, Jones BJ, Gaspar YM, Bacic A. 2002 Sensitivity of photosynthesis in a C₄ plant, maize, to heat stress. *Plant Physiol.* **129**, 1773–1780. (doi:10.1104/pp.002170)
96. Khanthavong P, Yabuta S, Malik AI, Hossain MA, Akagi I, Sakagami JI. 2022 Combinational variation temperature and soil water response of stomata and biomass production in maize, millet, sorghum and rice. *Plants* **11**, 1039. (doi:10.3390/plants11081039)
97. Franks PJ, Farquhar GD. 1999 A relationship between humidity response, growth form and photosynthetic operating point in C₃ plants. *Plant Cell Environ.* **22**, 1337–1349. (doi:10.1046/j.1365-3040.1999.00494.x)
98. Oren R, Sperry JS, Katul GG, Pataki DE, Ewers BE, Phillips N, Schäfer KVR. 1999 Survey and synthesis of intra- and interspecific variation in stomatal sensitivity to vapour pressure deficit. *Plant Cell Environ.* **22**, 1515–1526. (doi:10.1046/j.1365-3040.1999.00513.x)
99. Long SP. 1991 Modification of the response of photosynthetic productivity to rising temperature by atmospheric CO₂ concentrations: has its importance been underestimated? *Plant Cell Environ.* **14**, 729–739. (doi:10.1111/j.1365-3040.1991.tb01439.x)
100. Downton WJS, Loveys BR, Grant WJR. 1988 Non-uniform stomatal closure induced by water stress causes putative non-stomatal inhibition of photosynthesis. *New Phytol.* **110**, 503–509. (doi:10.1111/j.1469-8137.1988.tb00289.x)
101. Daley PF, Raschke K, Ball JT, Berry JA. 1989 Topography of photosynthetic activity of leaves obtained from video images of chlorophyll fluorescence. *Plant Physiol.* **90**, 1233–1238. (doi:10.1104/pp.90.4.1233)
102. Perkins SE, Alexander LV, Nairn JR. 2012 Increasing frequency, intensity and duration of observed global heatwaves and warm spells. *Geophys. Res. Lett.* **39**. (doi:10.1029/2012gl053361)
103. Liu J, Sun X, Xu F, Zhang Y, Zhang Q, Miao R, Zhang J, Liang J, Xu W. 2018 Suppression of OsMDHAR4 enhances heat tolerance by mediating H₂O₂-induced stomatal closure in rice plants. *Rice* **11**, 1–2. (doi:10.1186/s12284-018-0230-5)
104. Caine RS *et al.* 2019 Rice with reduced stomatal density conserves water and has improved drought tolerance under future climate conditions. *New Phytol.* **221**, 371–384. (doi:10.1111/nph.15344)
105. Kostaki KI *et al.* 2020 Guard cells integrate light and temperature signals to control stomatal aperture. *Plant Physiol.* **182**, 1404–1419. (doi:10.1104/pp.19.01528)
106. Kinoshita T, Doi M, Suetsugu N, Kagawa T, Wada M, Shimazaki K-i. 2001 phot1 and phot2 mediate blue light regulation of stomatal opening. *Nature* **414**, 656–660. (doi:10.1038/414656a)
107. Takemiya A, Sugiyama N, Fujimoto H, Tsutsumi T, Yamauchi S, Hiyaama A, Tada Y, Christie JM, Shimazaki K-i. 2013 Phosphorylation of BLUS1 kinase by phototropins is a primary step in stomatal opening. *Nat. Commun.* **4**, 2094. (doi:10.1038/ncomms3094)
108. Korte P, Unzner A, Damm T, Berger S, Kruschke M, Mueller MJ. 2023 High triacylglycerol turnover is required for efficient opening of stomata during heat stress in *Arabidopsis*. *Plant J.* **115**, 81–96. (doi:10.1111/tpj.16210)
109. Devireddy AR, Arbogast J, Mittler R. 2020 Coordinated and rapid whole-plant systemic stomatal responses. *New Phytol.* **225**, 21–25. (doi:10.1111/nph.16143)
110. Xu X *et al.* 2024 Stomatal opening under high temperatures is controlled by the OST1-regulated TOT3–AHA1 module. *Nat. Plants* **11**, 1–13. (doi:10.1038/s41477-024-01859-w)
111. Plesch G, Ehrhardt T, Mueller-Roeber B. 2001 Involvement of TAAAG elements suggests a role for Dof transcription factors in guard cell-specific gene expression. *Plant J.* **28**, 455–464. (doi:10.1046/j.1365-313x.2001.01166.x)
112. Kelly G *et al.* 2017 The *Solanum tuberosum* KST1 partial promoter as a tool for guard cell expression in multiple plant species. *J. Exp. Bot.* **68**, 2885–2897. (doi:10.1093/jxb/erx159)
113. Ali S, Kim WC. 2019 A fruitful decade using synthetic promoters in the improvement of transgenic plants. *Front. Plant Sci.* **10**, 493712. (doi:10.3389/fpls.2019.01433)
114. Schlücking K, Edel KH, Köster P, Drerup MM, Eckert C, Steinhorst L, Waadt R, Batistič O, Kudla J. 2013 A new β-estradiol-inducible vector set that facilitates easy construction and efficient expression of transgenes reveals CBL3-dependent cytoplasm to tonoplast translocation of CIPK5. *Mol. Plant* **6**, 1814–1829. (doi:10.1093/mp/sst065)

115. Patel-Tupper D, Kelikian A, Leipertz A, Maryn N, Tjahjadi M, Karavolias NG, Cho MJ, Niyogi KK. 2024 Multiplexed CRISPR-Cas9 mutagenesis of rice PSBS1 noncoding sequences for transgene-free overexpression. *Sci. Adv.* **10**, eadm7452. (doi:10.1126/sciadv.adm7452)
116. Wang C, Liu S, Dong Y, Zhao Y, Geng A, Xia X, Yin W. 2016 PdEPF1 regulates water-use efficiency and drought tolerance by modulating stomatal density in poplar. *Plant Biotechnol. J.* **14**, 849–860. (doi:10.1111/pbi.12434)
117. Hughes J, Hepworth C, Dutton C, Dunn JA, Hunt L, Stephens J, Waugh R, Cameron DD, Gray JE. 2017 Reducing stomatal density in barley improves drought tolerance without impacting on yield. *Plant Physiol* **174**, 776–787. (doi:10.1104/pp.16.01844)
118. Dunn J, Hunt L, Afsharinafar M, Meselmani MA, Mitchell A, Howells R, Wallington E, Fleming AJ, Gray JE. 2019 Reduced stomatal density in bread wheat leads to increased water-use efficiency. *J. Exp. Bot.* **70**, 4737–4748. (doi:10.1093/jxb/erz248)
119. Mohammed U, Caine RS, Atkinson JA, Harrison EL, Wells D, Chater CC, Gray JE, Swarup R, Murchie EH. 2019 Rice plants overexpressing OsEPF1 show reduced stomatal density and increased root cortical aerenchyma formation. *Sci. Rep* **9**, 1–13. (doi:10.1038/s41598-019-41922-7)
120. Ferguson JN *et al.* 2024 Reducing stomatal density by expression of a synthetic epidermal patterning factor increases leaf intrinsic water use efficiency and reduces plant water use in a C4 crop. *J. Exp. Bot.* **75**, 6823–6836. (doi:10.1093/jxb/erae289)
121. Lunn D, Kannan B, Germon A, Leverett A, Clemente TE, Altpeter F, Leakey ADB. 2024 Greater aperture counteracts effects of reduced stomatal density on water use efficiency: a case study on sugarcane and meta-analysis. *J. Exp. Bot.* **75**, 6837–6849. (doi:10.1093/jxb/erae271)
122. Liu Y, Qin L, Han L, Xiang Y, Zhao D. 2025 Overexpression of maize SDD1 (*ZmSDD1*) improves drought resistance in *Zea mays* L. by reducing stomatal density. *Plant Cell Tissue Organ Cult.* **122**, 147–159. (doi:10.1007/s11240-015-0757-8)
123. Tanaka Y, Sugano SS, Shimada T, Hara-Nishimura I. 2013 Enhancement of leaf photosynthetic capacity through increased stomatal density in *Arabidopsis*. *New Phytol.* **198**, 757–764. (doi:10.1111/nph.12186)
124. Jalakas P, Tulva I, Bērziņa NM, Hórák H. 2024 Stomatal patterning is differently regulated in adaxial and abaxial epidermis in *Arabidopsis*. *J. Exp. Bot.* **75**, 6476–6488. (doi:10.1093/jxb/erae354)
125. Wall S, Vialet-Chabrand S, Davey P, Van Rie J, Galle A, Cockram J, Lawson T. 2022 Stomata on the abaxial and adaxial leaf surfaces contribute differently to leaf gas exchange and photosynthesis in wheat. *New Phytol.* **235**, 1743–1756. (doi:10.1111/nph.18257)
126. Lemonnier P, Lawson T. 2023 Calvin cycle and guard cell metabolism impact stomatal function. *Semin. Cell Dev. Biol.* **155**, 59–70. (doi:10.1016/j.semcdb.2023.03.001)
127. Wang Y, Noguchi K, Ono N, Inoue S-i, Terashima I, Kinoshita T. 2014 Overexpression of plasma membrane H⁺-ATPase in guard cells promotes light-induced stomatal opening and enhances plant growth. *Proc. Natl Acad. Sci. USA* **111**, 533–538. (doi:10.1073/pnas.1305438111)
128. Yang Y, Costa A, Leonhardt N, Siegel RS, Schroeder JI. 2008 Isolation of a strong *Arabidopsis* guard cell promoter and its potential as a research tool. *Plant Methods* **4**, 1–15. (doi:10.1186/1746-4811-4-6)
129. Antunes WC, de Menezes Daloso D, Pinheiro DP, Williams TCR, Loureiro ME. 2017 Guard cell-specific down-regulation of the sucrose transporter SUT1 leads to improved water use efficiency and reveals the interplay between carbohydrate metabolism and K⁺ accumulation in the regulation of stomatal opening. *Environ. Exp. Bot.* **135**, 73–85. (doi:10.1016/j.envexpbot.2016.12.004)
130. Papanatsiou M, Petersen J, Henderson L, Wang Y, Christie JM, Blatt MR. 2019 Optogenetic manipulation of stomatal kinetics improves carbon assimilation, water use, and growth. *Science* **363**, 1456–1459. (doi:10.1126/science.aaw0046)
131. Kelly G, David-Schwartz R, Sade N, Moshelion M, Levi A, Alchanatis V, Granot D. 2012 The pitfalls of transgenic selection and new roles of AtHXK1: a high level of AtHXK1 expression uncouples hexokinase1-dependent sugar signaling from exogenous sugar. *Plant Physiol.* **159**, 47–51. (doi:10.1104/pp.112.196105)
132. Kelly G, Moshelion M, David-Schwartz R, Halperin O, Wallach R, Attia Z, Belasov E, Granot D. 2013 Hexokinase mediates stomatal closure. *Plant J.* **75**, 977–988. (doi:10.1111/tbj.12258)
133. Lugassi N *et al.* 2015 Expression of *Arabidopsis* hexokinase in citrus guard cells controls stomatal aperture and reduces transpiration. *Front. Plant Sci.* **6**, 1114. (doi:10.3389/fpls.2015.01114)
134. Acevedo-Siaca LG, Głowacka K, Driever SM, Salesse-Smith CE, Lugassi N, Granot D, Long SP, Kromdijk J. 2022 Guard-cell-targeted overexpression of arabidopsis hexokinase 1 can improve water use efficiency in field-grown tobacco plants. *J. Exp. Bot.* **73**, 5745–5757. (doi:10.1093/jxb/erac218)
135. Lehtretz GG, Sonnewald S, Lugassi N, Granot D, Sonnewald U. 2021 Future-proofing potato for drought and heat tolerance by overexpression of hexokinase and SP6A. *Front. Plant Sci.* **11**, 614534. (doi:10.3389/fpls.2020.614534)
136. Kelly G, Egbaria A, Khamaisi B, Lugassi N, Attia Z, Moshelion M, Granot D. 2019 Guard-cell hexokinase increases water-use efficiency under normal and drought conditions. *Front. Plant Sci.* **10**, 1499. (doi:10.3389/fpls.2019.01499)